

Datasheet for ABIN7138486
anti-NFKBIE antibody (pSer22)[Go to Product page](#)

2 Images

Overview

Quantity:	100 µL
Target:	NFKBIE
Binding Specificity:	pSer22
Reactivity:	Human
Host:	Rabbit
Clonality:	Polyclonal
Conjugate:	This NFKBIE antibody is un-conjugated
Application:	Western Blotting (WB), Immunohistochemistry (IHC), ELISA

Product Details

Immunogen:	Peptide sequence around phosphorylation site of serine 22 (I-E-S(p)-L-R) derived from Human IκB-ε.
Isotype:	IgG
Cross-Reactivity:	Human, Mouse
Purification:	Antibodies were produced by immunizing rabbits with synthetic phosphopeptide and KLH conjugates. Antibodies were purified by affinity-chromatography using epitope-specific phosphopeptide. Non-phospho specific antibodies were removed by chromatography using

Target Details

Target:	NFKBIE
Alternative Name:	NFKBIE (NFKBIE Products)

Target Details

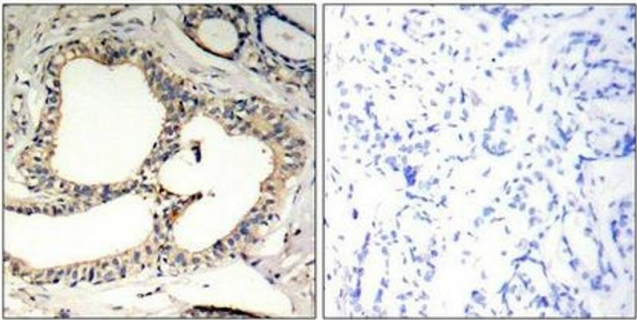
Background:	Background: Inhibits NF-kappa-B by complexing with and trapping it in the cytoplasm. Inhibits DNA-binding of NF-kappa-B p50-p65 and p50-c-Rel complexes. Shirane M, et al. (1999) J Biol Chem, 274(40): 28169-74 Karin, M. and Ben-Neriah, Y. (2000) Annu. Rev. Immunol. ,18, 621-663. Chen, Z.J. et al. (1996) Cell, 84, 853-862. Brown, K. et al. (1995) Science, 267, 1485-1488. Aliases: I kappa B epsilon antibody, I-kappa-B-epsilon antibody, IkappaBepsilon antibody, IκB E antibody, IκB-E antibody, IκB-epsilon antibody, IKBE antibody, IKBE_HUMAN antibody, MGC72568 antibody, NF kappa B inhibitor epsilon antibody, NF kappa BIE antibody, NF-kappa-B inhibitor epsilon antibody, NF-kappa-BIE antibody, NFkappa BIE antibody, NFkappaB inhibitor epsilon antibody, NFκBIE antibody, Nuclear factor of kappa light polypeptide gene enhancer in B cells inhibitor epsilon antibody, OTTHUMP00000016522 antibody, Slc35b2 antibody, solute carrier family 35, member B2 antibody
UniProt:	O00221
Pathways:	NF-kappaB Signaling , Maintenance of Protein Location

Application Details

Application Notes:	WB:1:500-1:1000, IHC:1:50-1:100,
Restrictions:	For Research Use only

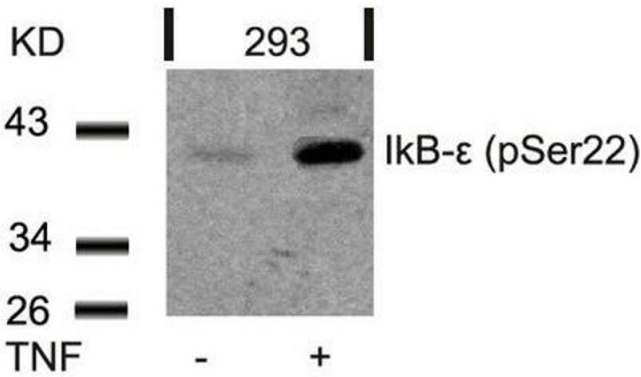
Handling

Format:	Liquid
Buffer:	Supplied at 1.0 mg/mL in phosphate buffered saline (without Mg2+ and Ca2+), pH 7.4, 150 mM NaCl, 0.02 % sodium azide and 50 % glycerol.
Preservative:	Sodium azide
Precaution of Use:	This product contains Sodium azide: a POISONOUS AND HAZARDOUS SUBSTANCE which should be handled by trained staff only.
Storage:	-20 °C,-80 °C
Storage Comment:	Upon receipt, store at -20°C or -80°C. Avoid repeated freeze.



Immunohistochemistry

Image 1. Immunohistochemical analysis of paraffin-embedded human breast carcinoma tissue using IκB-ε(Phospho-Ser22) Antibody(left) or the same antibody preincubated with blocking peptide(right).



Western Blotting

Image 2. Western blot analysis of extracts from 293 cells untreated or treated with TNF using IκB-ε(Phospho-Ser22) Antibody.