

Datasheet for ABIN7138490  
**anti-ATRIP antibody (pSer224)**[Go to Product page](#)

## 3 Images

## Overview

|                      |  |
|----------------------|--|
| Quantity:            | 100 µL   |
| Target:              | ATRIP  |
| Binding Specificity: | pSer224  |
| Reactivity:          | Human  |
| Host:                | Rabbit   |
| Clonality:           | Polyclonal   |
| Conjugate:           | This ATRIP antibody is un-conjugated                     |
| Application:         | Western Blotting (WB), ELISA, Immunohistochemistry (IHC) |

## Product Details

|                   |  |
|-------------------|--|
| Immunogen:        | Peptide sequence around phosphorylation site of serine 224 (H-V-S(p)-P-R) derived from Human ATRIP.  |
| Isotype:          | IgG  |
| Cross-Reactivity: | Human  |
| Purification:     | Antibodies were produced by immunizing rabbits with synthetic phosphopeptide and KLH conjugates. Antibodies were purified by affinity-chromatography using epitope-specific phosphopeptide. Non-phospho specific antibodies were removed by chromatography using |

## Target Details

|                   |  |
|-------------------|--|
| Target:           | ATRIP                                    |
| Alternative Name: | ATRIP ( <a href="#">ATRIP Products</a> ) |

## Target Details

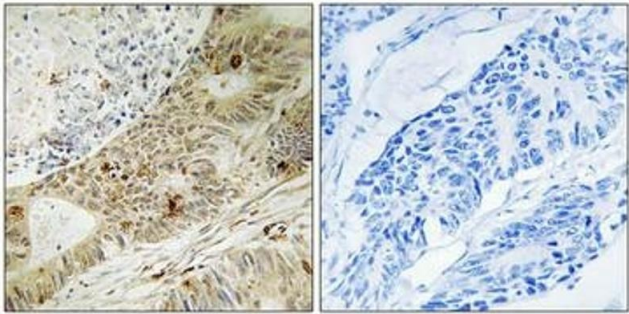
|             |  |
|-------------|--|
| Background: | Background: Required for checkpoint signaling after DNA damage. Required for ATR expression, possibly by stabilizing the protein.<br><br>Aliases: AGS1 antibody, ATIP antibody, ATM and Rad3 related interacting protein antibody, ATM and Rad3-related-interacting protein antibody, ATR interacting protein antibody, ATR-interacting protein antibody, Atrip antibody, ATRIP_HUMAN antibody, DKFZp762J2115 antibody, FLJ12343 antibody, MGC20625 antibody, MGC21482 antibody, MGC26740 antibody |
| UniProt:    | <a href="#">Q8WXE1</a>   |

## Application Details

|                    |                                  |
|--------------------|----------------------------------|
| Application Notes: | WB:1:500-1:1000, IHC:1:50-1:100, |
| Restrictions:      | For Research Use only            |

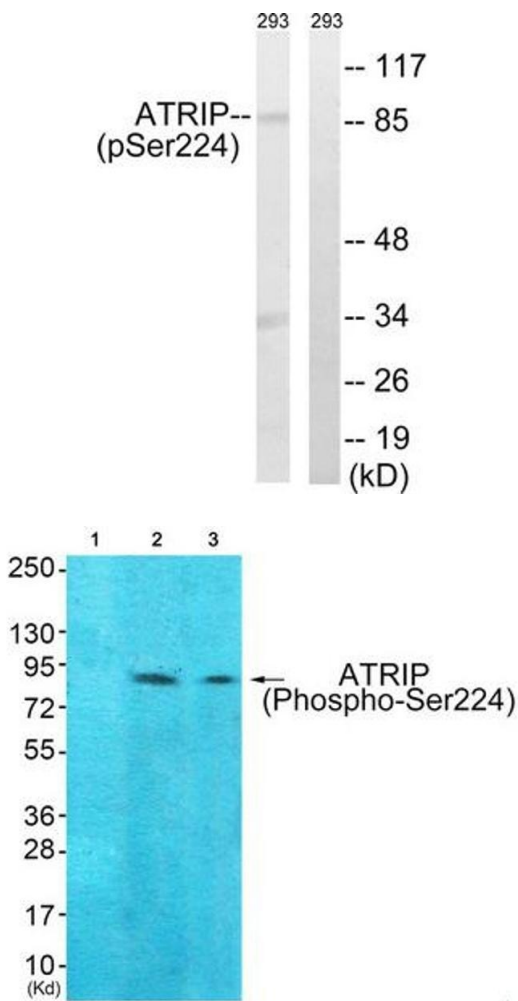
## Handling

|                    |   |
|--------------------|---|
| Format:            | Liquid  |
| Buffer:            | Rabbit IgG in phosphate buffered saline (without Mg <sup>2+</sup> and Ca <sup>2+</sup> ), pH 7.4, 150 mM NaCl, 0.02 % sodium azide and 50 % glycerol. |
| Preservative:      | Sodium azide  |
| Precaution of Use: | This product contains Sodium azide: a POISONOUS AND HAZARDOUS SUBSTANCE which should be handled by trained staff only.                                |
| Storage:           | -20 °C,-80 °C   |
| Storage Comment:   | Upon receipt, store at -20°C or -80°C. Avoid repeated freeze.   |



### Immunohistochemistry

**Image 1.** Immunohistochemistry analysis of paraffin-embedded human colon carcinoma tissue, using ATRIP (Phospho-Ser224) antibody. The picture on the right is treated with the synthesized peptide.



### Western Blotting

**Image 2.** Western blot analysis of extracts from 292 cells, treated with UV (15 mins), using ATRIP (Phospho-Ser224) antibody. The lane on the right is treated with the synthesized peptide.

### Western Blotting

**Image 3.** Western blot analysis of extracts from 293 cells (Lane 2) and HeLa cells (Lane 3), using ATRIP (Phospho-Ser224) Antibody. The lane on the left is treated with synthesized peptide.