

Datasheet for ABIN7138491
anti-TGFBR2 antibody (pSer225, pSer250)



[Go to Product page](#)

1 Image

Overview

Quantity:	100 µL
Target:	TGFBR2
Binding Specificity:	pSer225, pSer250
Reactivity:	Human
Host:	Rabbit
Clonality:	Polyclonal
Conjugate:	This TGFBR2 antibody is un-conjugated
Application:	ELISA, Immunohistochemistry (IHC)

Product Details

Immunogen:	Peptide sequence around phosphorylation site of Serine 225/250(D-R-S(p)-D-I) derived from Human TGF beta Receptor II.
Isotype:	IgG
Cross-Reactivity:	Human, Mouse, Rat
Purification:	Antibodies were produced by immunizing rabbits with synthetic phosphopeptide and KLH conjugates. Antibodies were purified by affinity-chromatography using epitope-specific phosphopeptide. Non-phospho specific antibodies were removed by chromatography using

Target Details

Target:	TGFBR2
Alternative Name:	TGFBR2 (TGFBR2 Products)

Target Details

Background:	<p>Background: Transmembrane serine/threonine kinase forming with the TGF-beta type I serine/threonine kinase receptor, TGFBR1, the non-promiscuous receptor for the TGF-beta cytokines TGFB1, TGFB2 and TGFB3. Transduces the TGFB1, TGFB2 and TGFB3 signal from the cell surface to the cytoplasm and is thus regulating a plethora of physiological and pathological processes including cell cycle arrest in epithelial and hematopoietic cells, control of mesenchymal cell proliferation and differentiation, wound healing, extracellular matrix production, immunosuppression and carcinogenesis. RC Tripathi, Invest. Ophthalmol. Vis. Sci., Jan 1993, 34: 260. N Chegini, Endocrinology, Jul 1994, 135: 439. GW Mulheron, Endocrinology, Dec 1992, 131: 2609</p> <p>Aliases: AAT3 antibody, FAA3 antibody, LDS1B antibody, LDS2 antibody, LDS2B antibody, MFS2 antibody, RIIC antibody, TAAD2 antibody, TbetaR II antibody, TbetaR-II antibody, TGF beta receptor type 2 antibody, TGF beta receptor type II antibody, TGF beta receptor type IIB antibody, TGF beta type II receptor antibody, TGF-beta receptor type II antibody, TGF-beta receptor type-2 antibody, TGF-beta type II receptor antibody, TGF-beta-R2 antibody, TGFB R2 antibody, TGFbeta - RII antibody, TGFbeta RII antibody, Tgfr2 antibody, TGFR-2 antibody, TGFR2_HUMAN antibody, Transforming growth factor beta receptor II antibody, Transforming growth factor beta receptor type II antibody, Transforming growth factor beta receptor type IIC antibody, Transforming growth factor, beta receptor II (70/80 kDa) antibody, transforming growth factor, beta receptor II alpha antibody, transforming growth factor, beta receptor II beta antibody, transforming growth factor, beta receptor II delta antibody, transforming growth factor, beta receptor II epsilon antibody, transforming growth factor, beta receptor II gamma antibody, Transforming growth factor-beta receptor type II antibody</p>
-------------	---

UniProt: [P37173](#)

Application Details

Application Notes:	IHC:1:50-1:100,
Restrictions:	For Research Use only

Handling

Format:	Liquid
Buffer:	Rabbit IgG in phosphate buffered saline (without Mg ²⁺ and Ca ²⁺), pH 7.4, 150 mM NaCl, 0.02 % sodium azide and 50 % glycerol.
Preservative:	Sodium azide

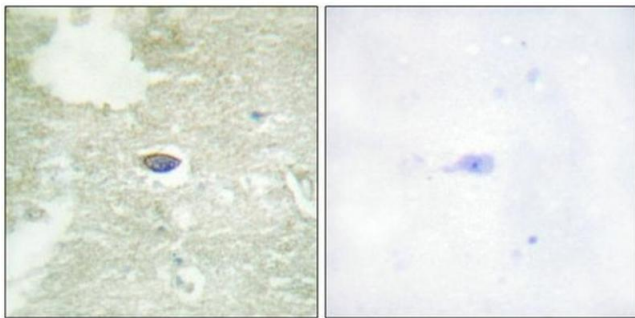
Handling

Precaution of Use: This product contains Sodium azide: a POISONOUS AND HAZARDOUS SUBSTANCE which should be handled by trained staff only.

Storage: -20 °C,-80 °C

Storage Comment: Upon receipt, store at -20°C or -80°C. Avoid repeated freeze.

Images



Immunohistochemistry

Image 1. Immunohistochemical analysis of paraffin-embedded human brain tissue using TGF β Receptor II (Phospho-Ser225/250) antibody (left) or the same antibody preincubated with blocking peptide (right).