

Datasheet for ABIN7138496
anti-G3BP1 antibody (pSer232)[Go to Product page](#)

3 Images

Overview

Quantity:	100 µL
Target:	G3BP1
Binding Specificity:	pSer232
Reactivity:	Human
Host:	Rabbit
Clonality:	Polyclonal
Conjugate:	This G3BP1 antibody is un-conjugated
Application:	Western Blotting (WB), Immunohistochemistry (IHC), ELISA, Immunofluorescence (IF)

Product Details

Immunogen:	Peptide sequence around phosphorylation site of serine 232 (S-S-S(p)-P-A) derived from Human G3BP-1.
Isotype:	IgG
Cross-Reactivity:	Human
Purification:	Antibodies were produced by immunizing rabbits with synthetic phosphopeptide and KLH conjugates. Antibodies were purified by affinity-chromatography using epitope-specific phosphopeptide. Non-phospho specific antibodies were removed by chromatography using

Target Details

Target:	G3BP1
Alternative Name:	G3BP1 (G3BP1 Products)

Target Details

Background:	<p>Background: May be a regulated effector of stress granule assembly. Phosphorylation-dependent sequence-specific endoribonuclease in vitro. Cleaves exclusively between cytosine and adenine and cleaves MYC mRNA preferentially at the 3'-UTR. ATP- and magnesium-dependent helicase. Unwinds preferentially partial DNA and RNA duplexes having a 17 bp annealed portion and either a hanging 3' tail or hanging tails at both 5'- and 3'-ends. Unwinds DNA/DNA, RNA/DNA, and RNA/RNA substrates with comparable efficiency. Acts unidirectionally by moving in the 5' to 3' direction along the bound single-stranded DNA.</p> <p>Tao WA, et al. (2005) Nat Methods. 2(8): 591-598.</p> <p>Zheng H, et al. (2005) Mol Cell Proteomics. 4(6):721-730.</p> <p>Beausoleil SA, et al. (2004) Proc Natl Acad Sci U S A. 101 (33): 12130-12135.</p> <p>Tourrihre H, et al. (2003) J Cell Biol. 160 (6): 823-831.</p> <p>Aliases: ATP dependent DNA helicase VIII antibody, ATP-dependent DNA helicase VIII antibody, G3BP antibody, G3BP stress granule assembly factor 1 antibody, G3BP-1 antibody, G3bp1 antibody, G3BP1_HUMAN antibody, GAP binding protein antibody, GAP SH3 domain binding protein 1 antibody, GAP SH3 domain-binding protein 1 antibody, GTPase activating protein (SH3 domain) binding protein 1 antibody, hDH VIII antibody, Human DNA helicase VIII antibody, MGC111040 antibody, Ras GTPase activating protein binding protein 1 antibody, Ras GTPase activating protein SH3 domain binding protein antibody, Ras GTPase-activating protein-binding protein 1 antibody, RasGAP associated endoribonuclease G3BP antibody</p>
-------------	---

UniProt:	Q13283
----------	------------------------

Pathways:	SARS-CoV-2 Protein Interactome
-----------	--

Application Details

Application Notes:	WB:1:500-1:1000, IHC:1:50-1:100, IF:1:100-1:200,
--------------------	--

Restrictions:	For Research Use only
---------------	-----------------------

Handling

Format:	Liquid
---------	--------

Buffer:	Supplied at 1.0 mg/mL in phosphate buffered saline (without Mg2+ and Ca2+), pH 7.4, 150 mM NaCl, 0.02 % sodium azide and 50 % glycerol.
---------	---

Preservative:	Sodium azide
---------------	--------------

Precaution of Use:	This product contains Sodium azide: a POISONOUS AND HAZARDOUS SUBSTANCE which
--------------------	---

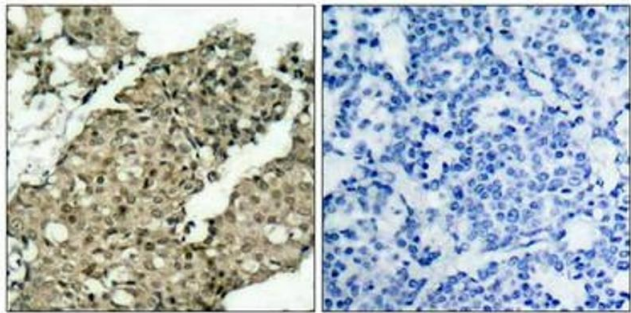
Handling

should be handled by trained staff only.

Storage: -20 °C,-80 °C

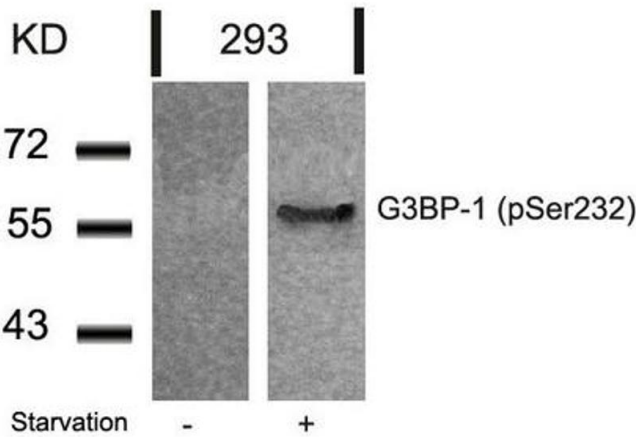
Storage Comment: Upon receipt, store at -20°C or -80°C. Avoid repeated freeze.

Images



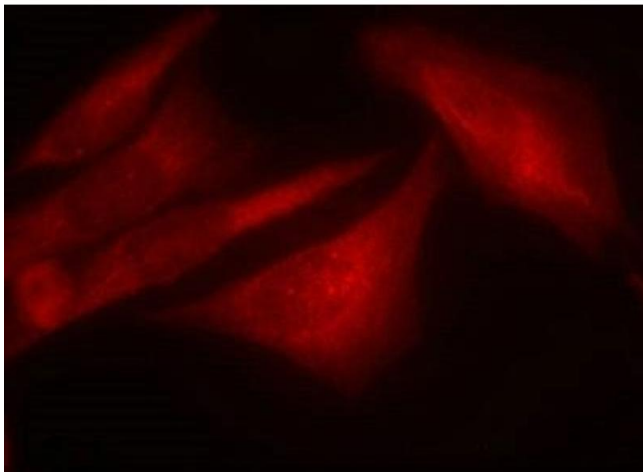
Immunohistochemistry

Image 1. Immunohistochemical analysis of paraffin-embedded human breast carcinoma tissue using G3BP-1(Phospho-Ser232) Antibody(left) or the same antibody preincubated with blocking peptide(right).



Western Blotting

Image 2. Western blot analysis of extracts from 293 cells untreated or treated with starvation using G3BP-1(Phospho-Ser232) Antibody.



Immunofluorescence

Image 3. Immunofluorescence staining of methanol-fixed Hela cells using G3BP-1(Phospho-Ser232) Antibody.