



Datasheet for ABIN7138502
anti-PDPK1 antibody (pSer241)



[Go to Product page](#)

3 Images

Overview

Quantity:	100 µL
Target:	PDPK1
Binding Specificity:	pSer241
Reactivity:	Human
Host:	Rabbit
Clonality:	Polyclonal
Application:	Western Blotting (WB), ELISA, Immunohistochemistry (IHC), Immunofluorescence (IF)

Product Details

Immunogen:	Peptide sequence around phosphorylation site of serine 241 (A-N-S(p)-F-V) derived from Human PDK1.
Isotype:	IgG
Cross-Reactivity:	Human, Mouse, Rat
Purification:	Antibodies were produced by immunizing rabbits with synthetic phosphopeptide and KLH conjugates. Antibodies were purified by affinity-chromatography using epitope-specific phosphopeptide. Non-phospho specific antibodies were removed by chromatography using

Target Details

Target:	PDPK1
Alternative Name:	PDPK1 (PDPK1 Products)
Background:	Background: Phosphorylates and activates not only PKB/AKT, but also PKA, PKC-zeta,

Target Details

RPS6KA1 and RPS6KB1. May play a general role in signaling processes and in development.

Scheid MP, et al. (2005) Mol Cell Biol, 25(6): 2347-63

Chen H, et al. (2001) Biochemistry, 40(39): 11851-9

Sato S, et al. (2002) J Biol Chem, 277(42): 39360-7

Lim MA, et al. (2003) Proc Natl Acad Sci U S A, 100(24): 14006-11

Aliases: 3 phosphoinositide dependent protein kinase 1 antibody, 3-phosphoinositide-dependent protein kinase 1 antibody, hPDK 1 antibody, hPDK1 antibody, MGC20087 antibody, MGC35290 antibody, OTTHUMP00000159109 antibody, OTTHUMP00000159110 antibody, OTTHUMP00000174525 antibody, PDK1 antibody, Pdk1 antibody, PDPK1_HUMAN antibody, PDPK2 antibody, PDPK2P antibody, PkB kinase antibody, PkB kinase like gene 1 antibody, PkB like 1 antibody, PRO0461 antibody, Protein kinase antibody

UniProt: [O15530](#)

Pathways: [PI3K-Akt Signaling](#), [TCR Signaling](#), [Fc-epsilon Receptor Signaling Pathway](#), [EGFR Signaling Pathway](#), [Neurotrophin Signaling Pathway](#), [Regulation of Leukocyte Mediated Immunity](#), [Positive Regulation of Immune Effector Process](#), [Cell-Cell Junction Organization](#), [Regulation of Cell Size](#), [Skeletal Muscle Fiber Development](#), [CXCR4-mediated Signaling Events](#), [Signaling Events mediated by VEGFR1 and VEGFR2](#), [VEGFR1 Specific Signals](#)

Application Details

Application Notes: WB:1:500-1:1000, IHC:1:50-1:100, IF:1:100-1:200,

Restrictions: For Research Use only

Handling

Format: Liquid

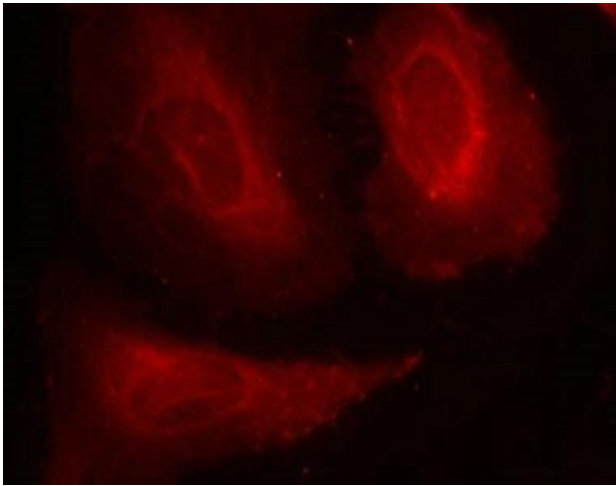
Buffer: Supplied at 1.0 mg/mL in phosphate buffered saline (without Mg²⁺ and Ca²⁺), pH 7.4, 150 mM NaCl, 0.02 % sodium azide and 50 % glycerol.

Preservative: Sodium azide

Precaution of Use: This product contains Sodium azide: a POISONOUS AND HAZARDOUS SUBSTANCE which should be handled by trained staff only.

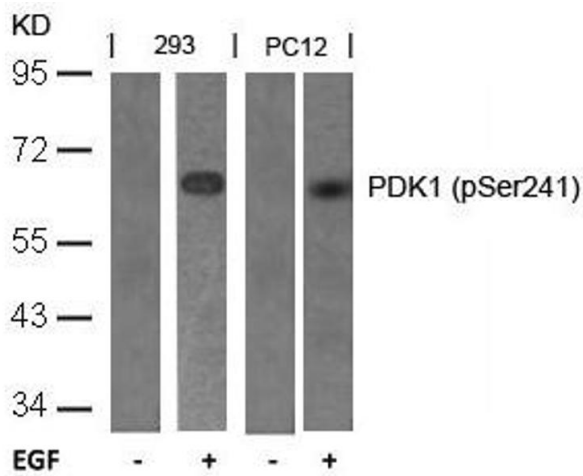
Storage: -20 °C, -80 °C

Storage Comment: Upon receipt, store at -20°C or -80°C. Avoid repeated freeze.



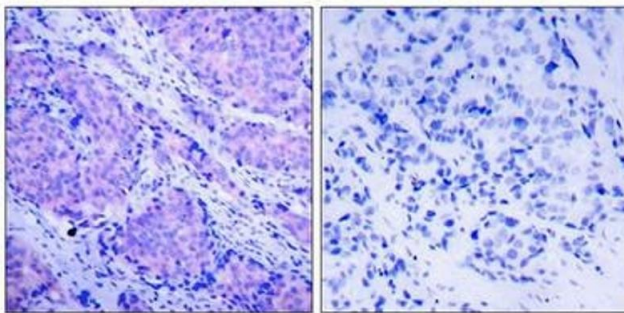
Immunofluorescence

Image 1. Immunofluorescence staining of methanol-fixed HeLa cells using PDK1(Phospho-Ser241) Antibody.



Western Blotting

Image 2. Western blot analysis of extracts from 293 and PC12 cells untreated or treated with EGF using PDK1(Phospho-Ser241) Antibody.



Immunohistochemistry

Image 3. Immunohistochemical analysis of paraffin-embedded human breast carcinoma tissue using PDK1(Phospho-Ser241) Antibody(left) or the same antibody preincubated with blocking peptide(right).