



Datasheet for ABIN7138511  
**anti-Stathmin 1 antibody (pSer25)**



[Go to Product page](#)

2 Images

Overview

|                      |  |
|----------------------|--|
| Quantity:            | 100 µL   |
| Target:              | Stathmin 1 (STMN1)                                       |
| Binding Specificity: | pSer25   |
| Reactivity:          | Human  |
| Host:                | Rabbit   |
| Clonality:           | Polyclonal   |
| Conjugate:           | This Stathmin 1 antibody is un-conjugated                |
| Application:         | Western Blotting (WB), Immunohistochemistry (IHC), ELISA |

Product Details

|                   |  |
|-------------------|--|
| Immunogen:        | Peptide sequence around phosphorylation site of serine 25 (I-L-S(p)-P-R) derived from Human Stathmin 1.  |
| Isotype:          | IgG  |
| Cross-Reactivity: | Human, Mouse, Rat  |
| Purification:     | Antibodies were produced by immunizing rabbits with synthetic phosphopeptide and KLH conjugates. Antibodies were purified by affinity-chromatography using epitope-specific phosphopeptide. Non-phospho specific antibodies were removed by chromatography using |

Target Details

|                   |  |
|-------------------|--|
| Target:           | Stathmin 1 (STMN1)                       |
| Alternative Name: | STMN1 ( <a href="#">STMN1 Products</a> ) |

## Target Details

---

**Background:** Background: Involved in the regulation of the microtubule (MT) filament system by destabilizing microtubules. Prevents assembly and promotes disassembly of microtubules. Phosphorylation at Ser-16 may be required for axon formation during neurogenesis. Involved in the control of the learned and innate fear

Boehm M, et al. (2002) EMBO J 21(13): 3390-3401.

Vadlamudi RK, et al. (2005) Mol Cell Biol 25(9): 3726-3736.

Zilfou JT, et al. (2001) Mol Cell Biol 21(12): 3974-3985.

Biernat J, et al. (2002) Mol Biol Cell 13(11): 4013-4028.

Aliases: C1orf215 antibody, Lag antibody, LAP 18 antibody, LAP18 antibody, Leukemia associated phosphoprotein p18 antibody, Leukemia-associated phosphoprotein p18 antibody, Metablastin antibody, Oncoprotein 18 antibody, OP 18 antibody, Op18 antibody, p18 antibody, p19 antibody, Phosphoprotein 19 antibody, Phosphoprotein p19 antibody, pp17 antibody, pp19 antibody, PR22 antibody, Pr22 protein antibody, Prosolin antibody, Protein Pr22 antibody, SMN antibody, Stathmin antibody, Stathmin1 antibody, STMN 1 antibody, Stmn1 antibody, STMN1\_HUMAN antibody

---

**UniProt:** [P16949](#)

---

**Pathways:** [MAPK Signaling](#), [Microtubule Dynamics](#)

## Application Details

---

**Application Notes:** WB:1:500-1:1000, IHC:1:50-1:100,

---

**Restrictions:** For Research Use only

## Handling

---

**Format:** Liquid

---

**Buffer:** Supplied at 1.0 mg/mL in phosphate buffered saline (without Mg<sup>2+</sup> and Ca<sup>2+</sup>), pH 7.4, 150 mM NaCl, 0.02 % sodium azide and 50 % glycerol.

---

**Preservative:** Sodium azide

---

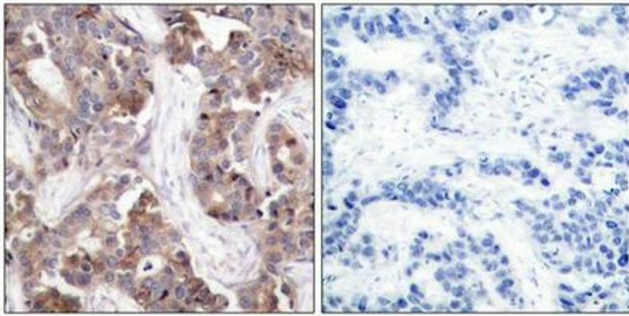
**Precaution of Use:** This product contains Sodium azide: a POISONOUS AND HAZARDOUS SUBSTANCE which should be handled by trained staff only.

---

**Storage:** -20 °C,-80 °C

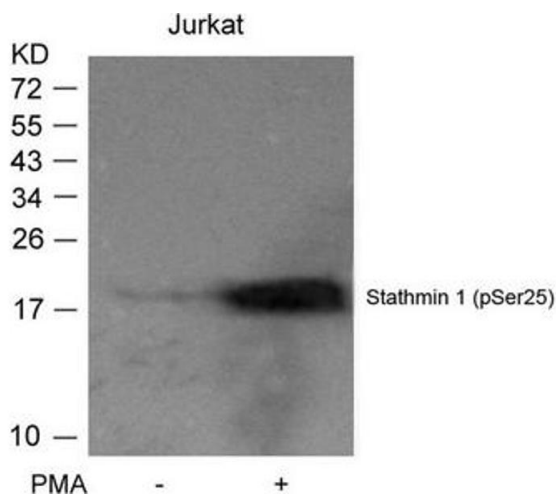
---

**Storage Comment:** Upon receipt, store at -20°C or -80°C. Avoid repeated freeze.



### Immunohistochemistry

**Image 1.** Immunohistochemical analysis of paraffin-embedded human breast carcinoma tissue using Stathmin 1(Phospho-Ser25) Antibody(left) or the same antibody preincubated with blocking peptide(right).



### Western Blotting

**Image 2.** Western blot analysis of extracts from Jurkat cells untreated or treated with PMA using Stathmin 1(Phospho-Ser25) Antibody.