

Datasheet for ABIN7138512  
**anti-PSMA3 antibody (pSer250)**[Go to Product page](#)

## 1 Image

## Overview

Quantity:	100 µL
Target:	PSMA3
Binding Specificity:	pSer250
Reactivity:	Human
Host:	Rabbit
Clonality:	Polyclonal
Conjugate:	This PSMA3 antibody is un-conjugated
Application:	Western Blotting (WB), ELISA

## Product Details

Immunogen:	Peptide sequence around phosphorylation site of serine 250 (D-E-S(p)-D-D) derived from Human Proteasome alpha3.
Isotype:	IgG
Cross-Reactivity:	Human, Mouse, Rat
Purification:	Antibodies were produced by immunizing rabbits with synthetic phosphopeptide and KLH conjugates. Antibodies were purified by affinity-chromatography using epitope-specific phosphopeptide. Non-phospho specific antibodies were removed by chromatography using

## Target Details

Target:	PSMA3
Alternative Name:	PSMA3 ( <a href="#">PSMA3 Products</a> )

## Target Details

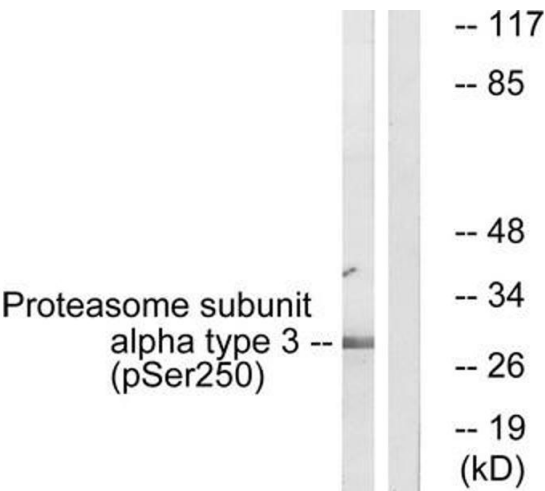
Background:	<p>Background: The proteasome is a multicatalytic proteinase complex which is characterized by its ability to cleave peptides with Arg, Phe, Tyr, Leu, and Glu adjacent to the leaving group at neutral or slightly basic pH. The proteasome has an ATP-dependent proteolytic activity. Binds to the C-terminus of CDKN1A and thereby mediates its degradation. Negatively regulates the membrane trafficking of the cell-surface thromboxane A2 receptor (TBXA2R) isoform 2.</p> <p>Aliases: HC8 antibody, Macropain subunit C8 antibody, MGC12306 antibody, MGC32631 antibody, Multicatalytic endopeptidase complex subunit C8 antibody, Proteasome (prosome macropain) subunit alpha type 3 antibody, Proteasome alpha 3 subunit antibody, Proteasome component C8 antibody, Proteasome subunit alpha type 3 antibody, Proteasome subunit alpha type-3 antibody, Proteasome subunit C8 antibody, PSA3_HUMAN antibody, PSC8 antibody, psmA3 antibody</p>
UniProt:	<a href="#">P25788</a>
Pathways:	<a href="#">Mitotic G1-G1/S Phases</a> , <a href="#">DNA Replication</a> , <a href="#">Synthesis of DNA</a>

## Application Details

Application Notes:	WB:1:500-1:3000,
Restrictions:	For Research Use only

## Handling

Format:	Liquid
Buffer:	Rabbit IgG in phosphate buffered saline (without Mg <sup>2+</sup> and Ca <sup>2+</sup> ), pH 7.4, 150 mM NaCl, 0.02 % sodium azide and 50 % glycerol.
Preservative:	Sodium azide
Precaution of Use:	This product contains Sodium azide: a POISONOUS AND HAZARDOUS SUBSTANCE which should be handled by trained staff only.
Storage:	-20 °C, -80 °C
Storage Comment:	Upon receipt, store at -20°C or -80°C. Avoid repeated freeze.



**Western Blotting**

**Image 1.** Western blot analysis of extracts from 3T3 cells, treated with EGF (200 ng/mL, 30 mins), using Proteasome  $\alpha$ 3 (Phospho-Ser250) antibody. The lane on the right is treated with the synthesized peptide.