

Datasheet for ABIN7138517
anti-JunB antibody (pSer259)[Go to Product page](#)

2 Images

Overview

Quantity:	100 µL
Target:	JunB (JUNB)
Binding Specificity:	pSer259
Reactivity:	Human
Host:	Rabbit
Clonality:	Polyclonal
Conjugate:	This JunB antibody is un-conjugated
Application:	Western Blotting (WB), Immunohistochemistry (IHC), ELISA

Product Details

Immunogen:	Peptide sequence around phosphorylation site of serine 259 (P-V-S(p)-P-I) derived from Human JunB.
Isotype:	IgG
Cross-Reactivity:	Human, Mouse, Rat
Purification:	Antibodies were produced by immunizing rabbits with synthetic phosphopeptide and KLH conjugates. Antibodies were purified by affinity-chromatography using epitope-specific phosphopeptide. Non-phospho specific antibodies were removed by chromatography using

Target Details

Target:	JunB (JUNB)
Alternative Name:	JUNB (JUNB Products)

Target Details

Background:	Background: Transcription factor involved in regulating gene activity following the primary growth factor response. Binds to the DNA sequence 5'-TGA[CG]TCA-3'. Beausoleil S A, et al. (2004) Proc Natl Acad Sci U S A. 101(33): 12130-12135. Aliases: Activator protein 1 antibody, AP 1 antibody, AP1 antibody, Jun B antibody, Jun B proto oncogene antibody, Jun B protooncogene antibody, Junb antibody, JunB proto oncogene antibody, JunB protoncogene 9 antibody, JunB protooncogene antibody, JUNB_HUMAN antibody, Transcription factor jun B antibody, Transcription factor jun-B antibody, Transcription factor junB antibody
-------------	--

UniProt: [P17275](#)

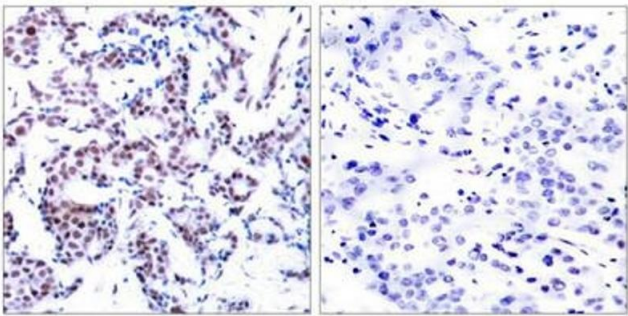
Application Details

Application Notes: WB:1:500-1:1000, IHC:1:50-1:100,

Restrictions: For Research Use only

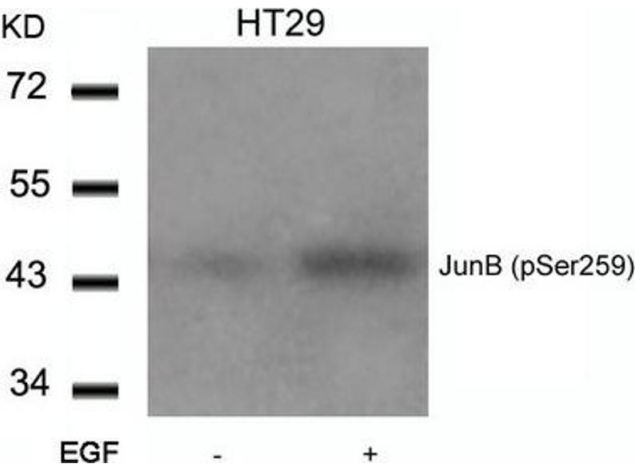
Handling

Format:	Liquid
Buffer:	Supplied at 1.0 mg/mL in phosphate buffered saline (without Mg ²⁺ and Ca ²⁺), pH 7.4, 150 mM NaCl, 0.02 % sodium azide and 50 % glycerol.
Preservative:	Sodium azide
Precaution of Use:	This product contains Sodium azide: a POISONOUS AND HAZARDOUS SUBSTANCE which should be handled by trained staff only.
Storage:	-20 °C,-80 °C
Storage Comment:	Upon receipt, store at -20°C or -80°C. Avoid repeated freeze.



Immunohistochemistry

Image 1. Immunohistochemical analysis of paraffin-embedded human breast carcinoma tissue using JunB(Phospho-Ser259) Antibody(left) or the same antibody preincubated with blocking peptide(right).



Western Blotting

Image 2. Western blot analysis of extracts from HT29 cells untreated or treated with EGF using JunB(Phospho-Ser259) Antibody.