

Datasheet for ABIN7138519

anti-Annexin A2 antibody (pSer26)[Go to Product page](#)**1** Image

Overview

Quantity:	100 µL
Target:	Annexin A2 (ANXA2)
Binding Specificity:	pSer26
Reactivity:	Human
Host:	Rabbit
Clonality:	Polyclonal
Conjugate:	This Annexin A2 antibody is un-conjugated
Application:	Western Blotting (WB), ELISA

Product Details

Immunogen:	Peptide sequence around phosphorylation site of Serine 26 (Y-G-S(p)-V-K) derived from Human ANXA2.
Isotype:	IgG
Cross-Reactivity:	Human, Mouse, Rat
Purification:	Antibodies were produced by immunizing rabbits with synthetic phosphopeptide and KLH conjugates. Antibodies were purified by affinity-chromatography using epitope-specific phosphopeptide. Non-phospho specific antibodies were removed by chromatography using

Target Details

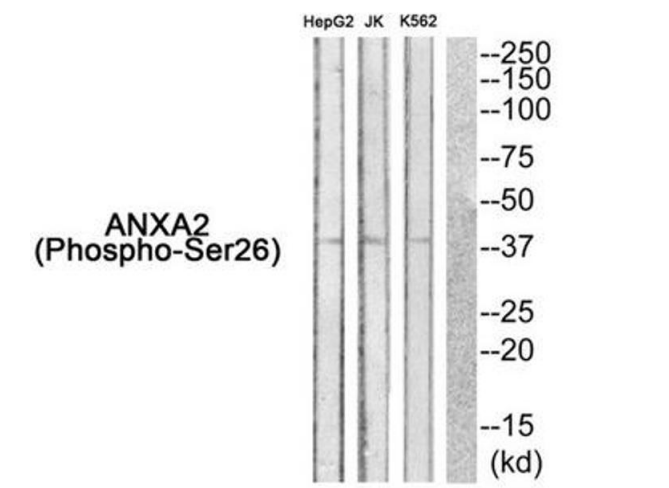
Target:	Annexin A2 (ANXA2)
Alternative Name:	ANXA2 (ANXA2 Products)

Target Details

Background:	<p>Background:</p> <p>Calcium-regulated membrane-binding protein whose affinity for calcium is greatly enhanced by anionic phospholipids. It binds two calcium ions with high affinity. May be involved in heat-stress response.</p> <p>Huang K.-S., Cell 46:191-199(1986).</p> <p>Spano F., Gene 95:243-251(1990).</p> <p>Bechtel S., BMC Genomics 8:399-399(2007).</p> <p>Aliases: Annexin A2 antibody, Annexin II antibody, Annexin II, heavy chain antibody, Annexin-2 antibody, ANX 2 antibody, ANX2 antibody, ANX2L4 antibody, ANXA2 antibody, ANXA2_HUMAN antibody, arylsulfatase B antibody, CAL1H antibody, Calpactin I heavy chain antibody, calpactin I heavy polypeptide (p36) antibody, Calpactin I heavy polypeptide antibody, Calpactin-1 heavy chain antibody, chromobindin 8 antibody, Chromobindin-8 antibody, Epididymis secretory protein Li 270 antibody, HEL S 270 antibody, LIP2 antibody, Lipocortin II antibody, LPC2 antibody, LPC2D antibody, p36 antibody, P36 protein antibody, PAP-IV antibody, Placental anticoagulant protein IV antibody, Protein I antibody</p>
UniProt:	P07355
Pathways:	S100 Proteins

Application Details

Application Notes:	WB:1:500-1:1000,
Restrictions:	For Research Use only
Handling	
Format:	Liquid
Buffer:	Rabbit IgG in phosphate buffered saline (without Mg ²⁺ and Ca ²⁺), pH 7.4, 150 mM NaCl, 0.02 % sodium azide and 50 % glycerol.
Preservative:	Sodium azide
Precaution of Use:	This product contains Sodium azide: a POISONOUS AND HAZARDOUS SUBSTANCE which should be handled by trained staff only.
Storage:	-20 °C,-80 °C
Storage Comment:	Upon receipt, store at -20°C or -80°C. Avoid repeated freeze.



Western Blotting

Image 1. Western blot analysis of extracts from HepG2 cells JK cells and K562 cells using ANXA2 (Phospho-Ser26) Antibody. The lane on the right is treated with the antigen-specific peptide.