



[Go to Product page](#)

Datasheet for ABIN7138527

## anti-Cyclin C antibody (pSer275)

### 2 Images

#### Overview

Quantity:	100 µL
Target:	Cyclin C (CCNC)
Binding Specificity:	pSer275
Reactivity:	Human
Host:	Rabbit
Clonality:	Polyclonal
Conjugate:	This Cyclin C antibody is un-conjugated
Application:	Western Blotting (WB), ELISA, Immunohistochemistry (IHC)

#### Product Details

Immunogen:	Peptide sequence around phosphorylation site of Serine 275(N-G-S(p)-A-N) derived from Human Cyclin C.
Isotype:	IgG
Cross-Reactivity:	Human, Mouse, Rat
Purification:	Antibodies were produced by immunizing rabbits with synthetic phosphopeptide and KLH conjugates. Antibodies were purified by affinity-chromatography using epitope-specific phosphopeptide. Non-phospho specific antibodies were removed by chromatography using

#### Target Details

Target:	Cyclin C (CCNC)
Alternative Name:	CCNC ( <a href="#">CCNC Products</a> )

## Target Details

---

Background:	<p>Background:</p> <p>The protein encoded by this gene is a member of the cyclin family of proteins. The encoded protein interacts with cyclin-dependent kinase 8 and induces the phosphorylation of the carboxy-terminal domain of the large subunit of RNA polymerase II. The level of mRNAs for this gene peaks in the G1 phase of the cell cycle. Two transcript variants encoding different isoforms have been found for this gene.</p> <p>Lew D.J., Cell 66:1197-1206(1991).</p> <p>Li H., Genomics 32:253-259(1996).</p> <p>Mungall A.J., Nature 425:805-811(2003).</p> <p>Aliases: ccnc antibody, CCNC_HUMAN antibody, CycC antibody, Cyclin C antibody, Cyclin-C antibody, hSRB11 antibody, OTTHUMP00000016897 antibody, SRB11 homolog antibody</p>
UniProt:	<a href="#">P24863</a>
Pathways:	<a href="#">Cell Division Cycle</a> , <a href="#">Regulation of Lipid Metabolism by PPARalpha</a>

## Application Details

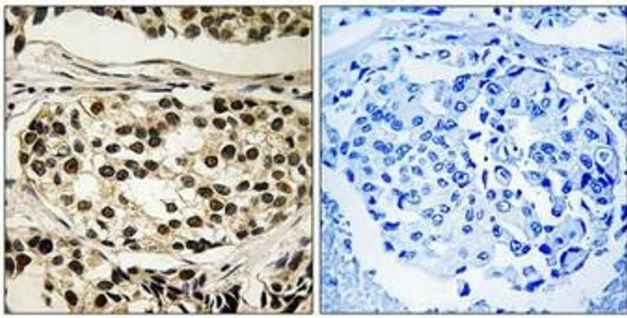
---

Application Notes:	WB:1:500-1:1000, IHC:1:50-1:100,
Restrictions:	For Research Use only

## Handling

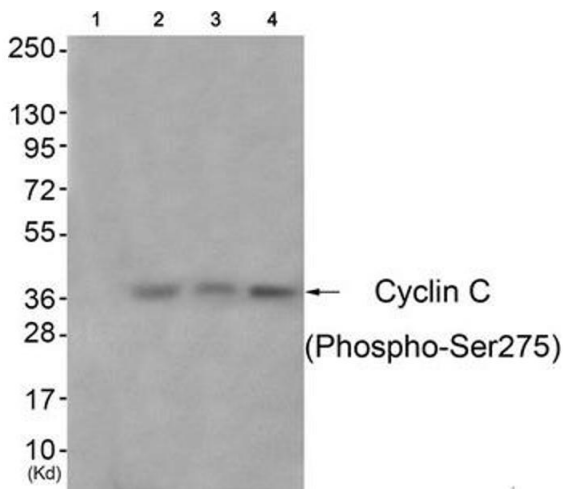
---

Format:	Liquid
Buffer:	Rabbit IgG in phosphate buffered saline (without Mg <sup>2+</sup> and Ca <sup>2+</sup> ), pH 7.4, 150 mM NaCl, 0.02 % sodium azide and 50 % glycerol.
Preservative:	Sodium azide
Precaution of Use:	This product contains Sodium azide: a POISONOUS AND HAZARDOUS SUBSTANCE which should be handled by trained staff only.
Storage:	-20 °C,-80 °C
Storage Comment:	Upon receipt, store at -20°C or -80°C. Avoid repeated freeze.



### Immunohistochemistry

**Image 1.** Immunohistochemical analysis of paraffin-embedded human breast carcinoma tissue using Cyclin C (Phospho-Ser275) antibody (left) or the same antibody preincubated with blocking peptide (right).



### Western Blotting

**Image 2.** Western blot analysis of extracts from 3T3 cells (Lane 2), A549 cells (Lane 3) and HeLa cells (Lane 4), using Cyclin C (Phospho-Ser275) Antibody. The lane on the left is treated with antigen-specific peptide.