

Datasheet for ABIN7138543  
**anti-SYT1 antibody (pSer309)**



[Go to Product page](#)

1 Image

## Overview

Quantity:	100 µL
Target:	SYT1
Binding Specificity:	pSer309
Reactivity:	Human
Host:	Rabbit
Clonality:	Polyclonal
Conjugate:	This SYT1 antibody is un-conjugated
Application:	ELISA, Immunofluorescence (IF)

## Product Details

Immunogen:	Peptide sequence around phosphorylation site of serine 309 (G-L-S(p)-D-P) derived from Human Synaptotagmin 1.
Isotype:	IgG
Cross-Reactivity:	Human, Mouse, Rat
Purification:	Antibodies were produced by immunizing rabbits with synthetic phosphopeptide and KLH conjugates. Antibodies were purified by affinity-chromatography using epitope-specific phosphopeptide. Non-phospho specific antibodies were removed by chromatography using

## Target Details

Target:	SYT1
Alternative Name:	SYT1 ( <a href="#">SYT1 Products</a> )

## Target Details

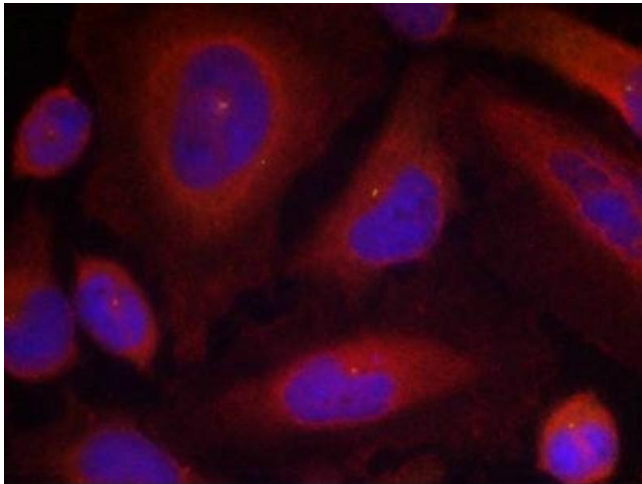
Background:	<p>Background:</p> <p>The synaptotagmins are integral membrane proteins of synaptic vesicles thought to serve as Ca(2+) sensors in the process of vesicular trafficking and exocytosis. Calcium binding to synaptotagmin I participates in triggering neurotransmitter release at the synapse</p> <p>Gustavsson N, et al. Proc Natl Acad Sci U S A. 2008 Mar 11, 105(10):3992-7.</p> <p>Cnops L, et al. Cereb Cortex. 2008 May, 18(5):1221-31.</p> <p>Lynch KL, et al. Mol Biol Cell. 2007 Dec, 18(12):4957-68.</p> <p>Aliases: DKFZp781D2042 antibody, FLJ42519 antibody, p65 antibody, SVP65 antibody, Synaptotagmin 2 antibody, Synaptotagmin I antibody, Synaptotagmin II antibody, Synaptotagmin-1 antibody, SYT antibody, Syt1 antibody, SYT1_HUMAN antibody, Syt2 antibody, SytI antibody</p>
UniProt:	<a href="#">P21579</a>
Pathways:	<a href="#">Synaptic Vesicle Exocytosis</a> , <a href="#">Dicarboxylic Acid Transport</a>

## Application Details

Application Notes:	IF:1:100-1:200,
Restrictions:	For Research Use only

## Handling

Format:	Liquid
Buffer:	Supplied at 1.0 mg/mL in phosphate buffered saline (without Mg2+ and Ca2+), pH 7.4, 150 mM NaCl, 0.02 % sodium azide and 50 % glycerol.
Preservative:	Sodium azide
Precaution of Use:	This product contains Sodium azide: a POISONOUS AND HAZARDOUS SUBSTANCE which should be handled by trained staff only.
Storage:	-20 °C,-80 °C
Storage Comment:	Upon receipt, store at -20°C or -80°C. Avoid repeated freeze.



#### Immunofluorescence

**Image 1.** Immunofluorescence staining of methanol-fixed HeLa cells using Synaptotagmin 1 (Phospho-Ser309) Antibody.