



[Go to Product page](#)

Datasheet for ABIN7138545

anti-GATA1 antibody (pSer310)

2 Images

Overview

Quantity:	100 µL
Target:	GATA1
Binding Specificity:	pSer310
Reactivity:	Human
Host:	Rabbit
Clonality:	Polyclonal
Conjugate:	This GATA1 antibody is un-conjugated
Application:	Western Blotting (WB), ELISA, Immunofluorescence (IF)

Product Details

Immunogen:	Peptide sequence around phosphorylation site of serine 310 (K-A-S(p)-G-K) derived from Human GATA1.
Isotype:	IgG
Cross-Reactivity:	Human, Mouse, Rat
Purification:	Antibodies were produced by immunizing rabbits with synthetic phosphopeptide and KLH conjugates. Antibodies were purified by affinity-chromatography using epitope-specific phosphopeptide. Non-phospho specific antibodies were removed by chromatography using

Target Details

Target:	GATA1
Alternative Name:	GATA1 (GATA1 Products)

Target Details

Background: Background: GATA1 encodes a protein which belongs to the GATA family of transcription factors. The protein plays an important role in erythroid development by regulating the switch of fetal hemoglobin to adult hemoglobin. Mutations in this gene have been associated with X-linked dyserythropoietic anemia and thrombocytopenia.

Kadri Z, et al.(2005)Mol Cell Biol 2005 Sep, 25(17): 7412-22.

Aliases: Anemia, X-linked, without thrombocytopenia, included antibody, ERYF 1 antibody, Eryf1 antibody, Erythroid transcription factor antibody, Erythroid transcription factor 1 antibody, GATA 1 antibody, GATA binding factor 1 antibody, GATA binding protein 1 (globin transcription factor 1) antibody, GATA binding protein 1 antibody, GATA-1 antibody, GATA-binding factor 1 antibody, GATA1 antibody, GATA1_HUMAN antibody, GF 1 antibody, GF-1 antibody, GF1 antibody, Globin transcription factor 1 antibody, NF E1 antibody, NF E1 DNA binding protein antibody, NF-E1 DNA-binding protein antibody, NFE 1 antibody, NFE1 antibody, Nuclear factor erythroid 1 antibody, Transcription factor GATA1 antibody, XLANP antibody, XLTDA antibody, XLTT antibody

UniProt: [P15976](#)

Pathways: [Cellular Response to Molecule of Bacterial Origin](#)

Application Details

Application Notes: WB:1:500-1:1000, IF:1:100-1:200,

Restrictions: For Research Use only

Handling

Format: Liquid

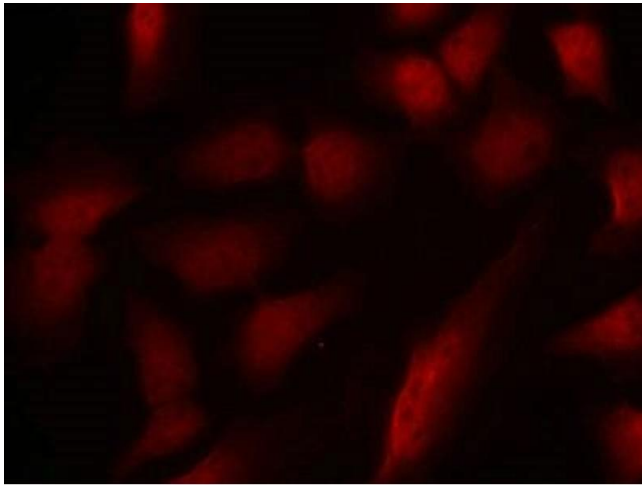
Buffer: Supplied at 1.0 mg/mL in phosphate buffered saline (without Mg²⁺ and Ca²⁺), pH 7.4, 150 mM NaCl, 0.02 % sodium azide and 50 % glycerol.

Preservative: Sodium azide

Precaution of Use: This product contains Sodium azide: a POISONOUS AND HAZARDOUS SUBSTANCE which should be handled by trained staff only.

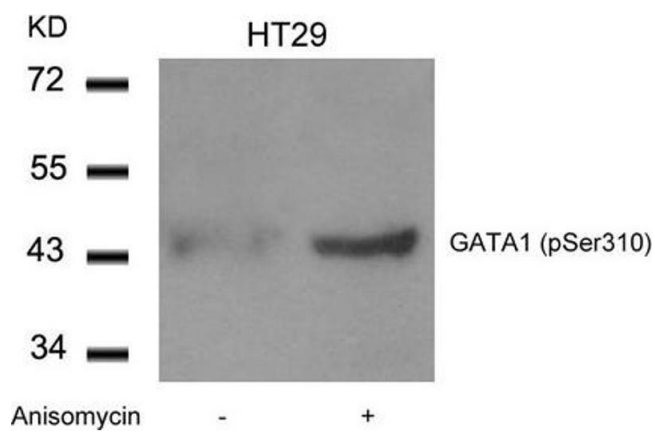
Storage: -20 °C,-80 °C

Storage Comment: Upon receipt, store at -20°C or -80°C. Avoid repeated freeze.



Immunofluorescence

Image 1. Immunofluorescence staining of methanol-fixed HeLa cells using GATA1(Phospho-Ser310) Antibody.



Western Blotting

Image 2. Western blot analysis of extracts from HT29 cells untreated or treated with Anisomycin using GATA1(Phospho-Ser310) Antibody.