

Datasheet for ABIN7138548  
**anti-STK39 antibody (pSer311)**[Go to Product page](#)

## 2 Images

## Overview

Quantity:	100 µL
Target:	STK39
Binding Specificity:	pSer311
Reactivity:	Human
Host:	Rabbit
Clonality:	Polyclonal
Conjugate:	This STK39 antibody is un-conjugated
Application:	Western Blotting (WB), ELISA, Immunohistochemistry (IHC)

## Product Details

Immunogen:	Peptide sequence around phosphorylation site of Serine 311(S-F-R(p)-K-L) derived from Human STK39.
Isotype:	IgG
Cross-Reactivity:	Human, Mouse, Rat
Purification:	Antibodies were produced by immunizing rabbits with synthetic phosphopeptide and KLH conjugates. Antibodies were purified by affinity-chromatography using epitope-specific phosphopeptide. Non-phospho specific antibodies were removed by chromatography using

## Target Details

Target:	STK39
Alternative Name:	STK39 ( <a href="#">STK39 Products</a> )

## Target Details

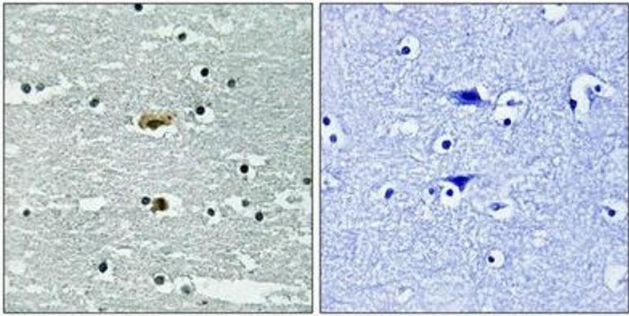
Background:	<p>Background:</p> <p>May act as a mediator of stress-activated signals.</p> <p>Johnston A.M., Oncogene 19:4290-4297(2000).</p> <p>Melnick M.B., Submitted (OCT-1997) to the EMBL/GenBank/DDBJ databases.</p> <p>Olsen J.V., Cell 127-635-648(2006).</p> <p>Aliases: DCHT antibody, DKFZp686K05124 antibody, OTTHUMP00000165175 antibody, PASK antibody, Proline alanine rich STE20 related kinase antibody, Serine threonine kinase 39 (STE20/SPS1 homolog yeast) antibody, Serine threonine kinase 39 antibody, Serine/threonine protein kinase 39 antibody, Serine/threonine-protein kinase 39 antibody, Small intestine SPAK like kinase antibody, SPAK antibody, Ste 20 related kinase antibody, Ste-20-related kinase antibody, Ste20 like protein kinase antibody, STE20/SPS1 homolog antibody, STE20/SPS1 related proline alanine rich protein kinase antibody, STE20/SPS1-related proline-alanine-rich protein kinase antibody, STK 39 antibody, Stk39 antibody, STK39_HUMAN antibody</p>
UniProt:	<a href="#">Q9UEW8</a>

## Application Details

Application Notes:	WB:1:500-1:1000, IHC:1:50-1:100,
Restrictions:	For Research Use only

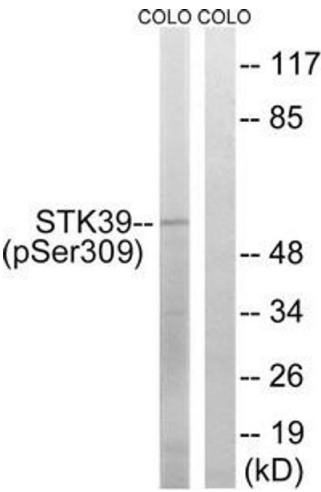
## Handling

Format:	Liquid
Buffer:	Rabbit IgG in phosphate buffered saline (without Mg <sup>2+</sup> and Ca <sup>2+</sup> ), pH 7.4, 150 mM NaCl, 0.02 % sodium azide and 50 % glycerol.
Preservative:	Sodium azide
Precaution of Use:	This product contains Sodium azide: a POISONOUS AND HAZARDOUS SUBSTANCE which should be handled by trained staff only.
Storage:	-20 °C,-80 °C
Storage Comment:	Upon receipt, store at -20°C or -80°C. Avoid repeated freeze.



### Immunohistochemistry

**Image 1.** Immunohistochemical analysis of paraffin-embedded human brain tissue using STK39 (Phospho-Ser309) antibody (left) or the same antibody preincubated with blocking peptide (right).



### Western Blotting

**Image 2.** Western blot analysis of extracts from COLO cells using STK39 (Phospho-Ser309) Antibody. The lane on the right is treated with the antigen-specific peptide.