

Datasheet for ABIN7138551  
**anti-FOXO1 antibody (pSer319)**

## 3 Images

[Go to Product page](#)

## Overview

Quantity:	100 µL
Target:	FOXO1
Binding Specificity:	pSer319
Reactivity:	Human
Host:	Rabbit
Clonality:	Polyclonal
Application:	Western Blotting (WB), Immunohistochemistry (IHC), ELISA, Immunofluorescence (IF)

## Product Details

Immunogen:	Peptide sequence around phosphorylation site of serine 319 (T-S-S(p)-N-A) derived from Human FKHR/FOXO1A.
Isotype:	IgG
Cross-Reactivity:	Human, Mouse, Rat
Purification:	Antibodies were produced by immunizing rabbits with synthetic phosphopeptide and KLH conjugates. Antibodies were purified by affinity-chromatography using epitope-specific phosphopeptide. Non-phospho specific antibodies were removed by chromatography using

## Target Details

Target:	FOXO1
Alternative Name:	FOXO1 ( <a href="#">FOXO1 Products</a> )
Background:	Background:

## Target Details

FKHR belongs to the forkhead family of transcription factors, which are characterized by a distinct forkhead domain. It may play a role in myogenic growth and differentiation. The mammalian DAF-16-like transcription factors, FKHR, FKHRL1, and AFX, function as key regulators of insulin signaling, cell cycle progression, and apoptosis downstream of phosphoinositide 3-kinase. Gene activation through binding to insulin response sequences has been essential for mediating these functions. D-type Cyclins (in Class III) is required for FKHR mediated inhibition of cell cycle progression and transformation. FKHR gene is mapped to chromosome 13q14

Rena G, et al. (2002) EMBO J 21(9): 2263-2271.

Woods YL, et al. (2001) Biochem J 355(Pt 3): 597-607.

Rena G, et al. (2001) Biochem J 354(Pt 3): 605-612.

Aliases: FKH 1 antibody, FKH1 antibody, FKHR antibody, Forkhead (Drosophila) homolog 1 (rhabdomyosarcoma) antibody, Forkhead box O1 antibody, Forkhead box protein O1 antibody, Forkhead box protein O1A antibody, Forkhead in rhabdomyosarcoma antibody, Forkhead, Drosophila, homolog of, in rhabdomyosarcoma antibody, FoxO transcription factor antibody, foxo1 antibody, FOXO1\_HUMAN antibody, FOXO1A antibody, OTTHUMP00000018301 antibody

UniProt: [Q12778](#)

Pathways: [PI3K-Akt Signaling](#), [Cell Division Cycle](#), [Fc-epsilon Receptor Signaling Pathway](#), [EGFR Signaling Pathway](#), [Neurotrophin Signaling Pathway](#), [Carbohydrate Homeostasis](#), [Chromatin Binding](#), [Regulation of Carbohydrate Metabolic Process](#), [CXCR4-mediated Signaling Events](#), [BCR Signaling](#)

## Application Details

Application Notes: WB:1:500-1:1000, IHC:1:50-1:100, IF:1:100-1:200,

Restrictions: For Research Use only

## Handling

Format: Liquid

Buffer: Supplied at 1.0 mg/mL in phosphate buffered saline (without Mg<sup>2+</sup> and Ca<sup>2+</sup>), pH 7.4, 150 mM NaCl, 0.02 % sodium azide and 50 % glycerol.

Preservative: Sodium azide

Precaution of Use: This product contains Sodium azide: a POISONOUS AND HAZARDOUS SUBSTANCE which

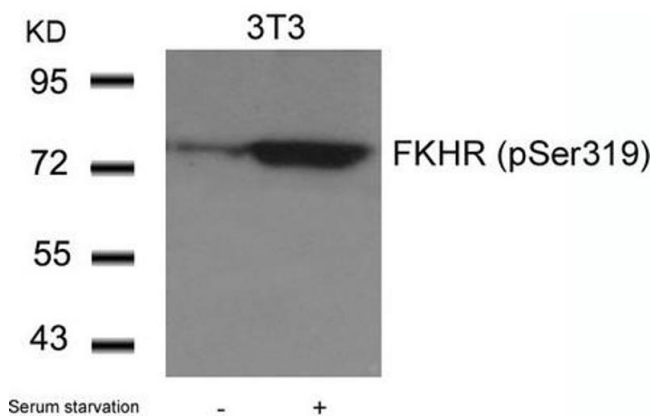
Handling

should be handled by trained staff only.

Storage: -20 °C,-80 °C

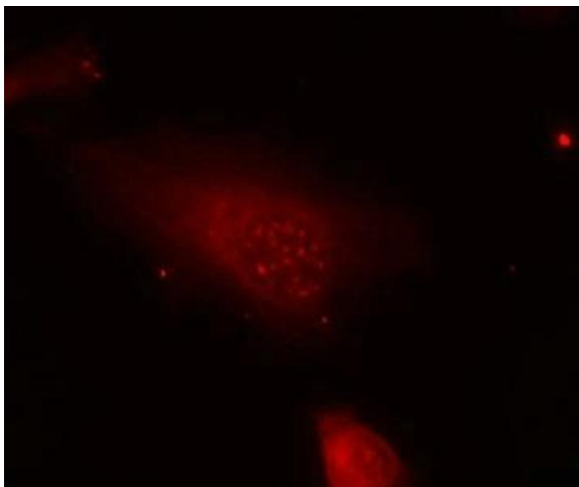
Storage Comment: Upon receipt, store at -20°C or -80°C. Avoid repeated freeze.

Images



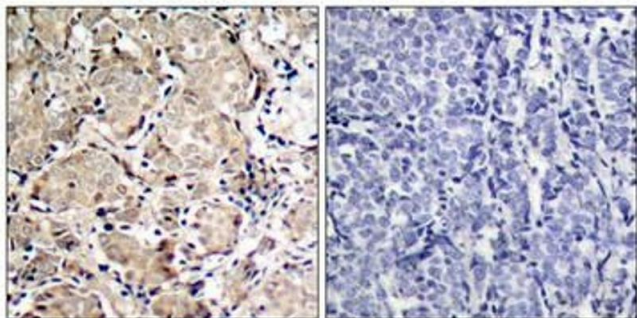
Western Blotting

**Image 1.** Western blot analysis of extracts from 3T3 cells untreated or treated with serum starvation using FKHR(Phospho-Ser319) Antibody.



Immunofluorescence

**Image 2.** Immunofluorescence staining of methanol-fixed Hela cells using FKHR(Phospho-Ser319) Antibody.



Immunohistochemistry

**Image 3.** Immunohistochemical analysis of paraffin-embedded human breast carcinoma tissue using FKHR(Phospho-Ser319) Antibody(left) or the same antibody preincubated with blocking peptide(right).