

Datasheet for ABIN7138556
anti-STK39 antibody (pSer325)[Go to Product page](#)

1 Image

Overview

Quantity:	100 µL
Target:	STK39
Binding Specificity:	pSer325
Reactivity:	Human
Host:	Rabbit
Clonality:	Polyclonal
Conjugate:	This STK39 antibody is un-conjugated
Application:	ELISA, Immunohistochemistry (IHC)

Product Details

Immunogen:	Peptide sequence around phosphorylation site of Serine 325(S-K-R(p)-R-T) derived from Human STK39.
Isotype:	IgG
Cross-Reactivity:	Human, Mouse, Rat
Purification:	Antibodies were produced by immunizing rabbits with synthetic phosphopeptide and KLH conjugates. Antibodies were purified by affinity-chromatography using epitope-specific phosphopeptide. Non-phospho specific antibodies were removed by chromatography using

Target Details

Target:	STK39
Alternative Name:	STK39 (STK39 Products)

Target Details

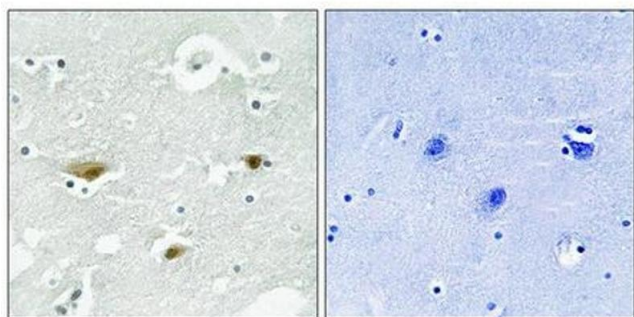
Background:	<p>Background:</p> <p>May act as a mediator of stress-activated signals.</p> <p>Johnston A.M., Oncogene 19:4290-4297(2000).</p> <p>Olsen J.V., Cell 127:635-648(2006).</p> <p>Beausoleil S.A., Nat. Biotechnol. 24:1285-1292(2006).</p> <p>Aliases: DCHT antibody, DKFZp686K05124 antibody, OTTHUMP00000165175 antibody, PASK antibody, Proline alanine rich STE20 related kinase antibody, Serine threonine kinase 39 (STE20/SPS1 homolog yeast) antibody, Serine threonine kinase 39 antibody, Serine/threonine protein kinase 39 antibody, Serine/threonine-protein kinase 39 antibody, Small intestine SPAK like kinase antibody, SPAK antibody, Ste 20 related kinase antibody, Ste-20-related kinase antibody, Ste20 like protein kinase antibody, STE20/SPS1 homolog antibody, STE20/SPS1 related proline alanine rich protein kinase antibody, STE20/SPS1-related proline-alanine-rich protein kinase antibody, STK 39 antibody, Stk39 antibody, STK39_HUMAN antibody</p>
UniProt:	Q9UEW8

Application Details

Application Notes:	IHC:1:50-1:100,
Restrictions:	For Research Use only

Handling

Format:	Liquid
Buffer:	Rabbit IgG in phosphate buffered saline (without Mg ²⁺ and Ca ²⁺), pH 7.4, 150 mM NaCl, 0.02 % sodium azide and 50 % glycerol.
Preservative:	Sodium azide
Precaution of Use:	This product contains Sodium azide: a POISONOUS AND HAZARDOUS SUBSTANCE which should be handled by trained staff only.
Storage:	-20 °C,-80 °C
Storage Comment:	Upon receipt, store at -20°C or -80°C. Avoid repeated freeze.



Immunohistochemistry

Image 1. Immunohistochemical analysis of paraffin-embedded human brain tissue using STK39 (Phospho-Ser323) antibody (left) or the same antibody preincubated with blocking peptide (right).