

Datasheet for ABIN7138557
anti-NUDC antibody (pSer326)[Go to Product page](#)

3 Images

Overview

Quantity:	100 µL
Target:	NUDC
Binding Specificity:	pSer326
Reactivity:	Human
Host:	Rabbit
Clonality:	Polyclonal
Conjugate:	This NUDC antibody is un-conjugated
Application:	Western Blotting (WB), ELISA, Immunohistochemistry (IHC)

Product Details

Immunogen:	Peptide sequence around phosphorylation site of serine 326 (D-F-S(p)-K-A) derived from Human NudC.
Isotype:	IgG
Cross-Reactivity:	Human, Mouse, Rat
Purification:	Antibodies were produced by immunizing rabbits with synthetic phosphopeptide and KLH conjugates. Antibodies were purified by affinity-chromatography using epitope-specific phosphopeptide. Non-phospho specific antibodies were removed by chromatography using

Target Details

Target:	NUDC
Abstract:	NUDC Products

Target Details

Background:	Background: Plays a role in neurogenesis and neuronal migration By similarity. Necessary for correct formation of mitotic spindles and chromosome separation during mitosis. Necessary for cytokinesis and cell proliferation. Aliases: HNUDC antibody, MNUDC antibody, MNUDC protein antibody, NPD011 antibody, Nuclear distribution C homolog antibody, Nuclear distribution gene C (A.nidulans) homolog antibody, Nuclear distribution gene C homolog antibody, Nuclear distribution gene C homolog (A. nidulans) antibody, Nuclear distribution protein C homolog antibody, Nuclear migration protein nudC antibody, nudC antibody, NudC nuclear distribution protein antibody, NUDC_HUMAN antibody, OTTHUMP0000004405 antibody, SIG 92 antibody, SIG92 antibody
-------------	---

UniProt: [Q9Y266](#)

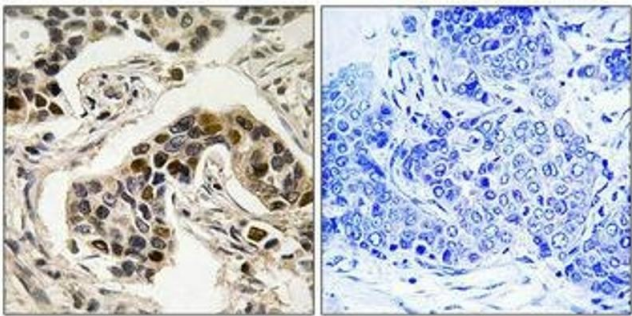
Application Details

Application Notes: WB:1:500-1:1000, IHC:1:50-1:100,

Restrictions: For Research Use only

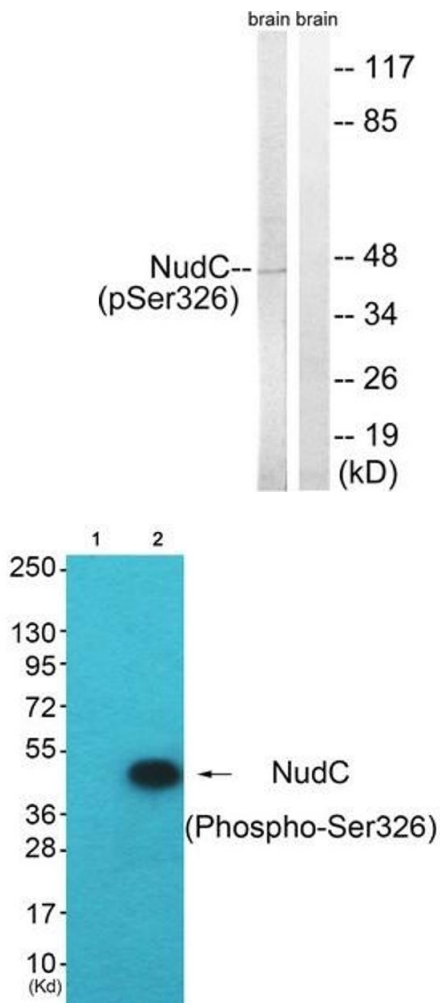
Handling

Format:	Liquid
Buffer:	Rabbit IgG in phosphate buffered saline (without Mg ²⁺ and Ca ²⁺), pH 7.4, 150 mM NaCl, 0.02 % sodium azide and 50 % glycerol.
Preservative:	Sodium azide
Precaution of Use:	This product contains Sodium azide: a POISONOUS AND HAZARDOUS SUBSTANCE which should be handled by trained staff only.
Storage:	-20 °C,-80 °C
Storage Comment:	Upon receipt, store at -20°C or -80°C. Avoid repeated freeze.



Immunohistochemistry

Image 1. Immunohistochemistry analysis of paraffin-embedded human breast carcinoma tissue using NudC (Phospho-Ser326) antibody. The picture on the right is treated with the synthesized peptide.



Western Blotting

Image 2. Western blot analysis of extracts from rat brain cells, using NudC (Phospho-Ser326) antibody. The lane on the right is treated with the synthesized peptide.

Western Blotting

Image 3. Western blot analysis of extracts from HepG2 cells (Lane 2), using NudC (Phospho-Ser326) Antibody. The lane on the left is treated with synthesized peptide.