



Datasheet for ABIN7138558
anti-BRCA2 antibody (pSer3291)



[Go to Product page](#)

1 Image

Overview

Quantity:	100 µL
Target:	BRCA2
Binding Specificity:	pSer3291
Reactivity:	Human
Host:	Rabbit
Clonality:	Polyclonal
Conjugate:	This BRCA2 antibody is un-conjugated
Application:	Western Blotting (WB), ELISA

Product Details

Immunogen:	Peptide sequence around phosphorylation site of Serine 3291 (F-V-S(p)-P-A) derived from Human BRCA2.
Isotype:	IgG
Cross-Reactivity:	Human, Mouse, Rat
Purification:	Antibodies were produced by immunizing rabbits with synthetic phosphopeptide and KLH conjugates. Antibodies were purified by affinity-chromatography using epitope-specific phosphopeptide. Non-phospho specific antibodies were removed by chromatography using

Target Details

Target:	BRCA2
Alternative Name:	BRCA2 (BRCA2 Products)

Target Details

Background:

Background:

Involved in double-strand break repair and/or homologous recombination. Binds RAD51 and potentiates recombinational DNA repair by promoting assembly of RAD51 onto single-stranded DNA (ssDNA). Acts by targeting RAD51 to ssDNA over double-stranded DNA, enabling RAD51 to displace replication protein-A (RPA) from ssDNA and stabilizing RAD51-ssDNA filaments by blocking ATP hydrolysis. Part of a PALB2-scaffolded HR complex containing RAD51C and which is thought to play a role in DNA repair by HR. May participate in S phase checkpoint activation. Binds selectively to ssDNA, and to ssDNA in tailed duplexes and replication fork structures.

Wooster R., Nature 378:789-792(1995).

Tavtigian S.V., Nat. Genet. 12:333-337(1996).

Dunham A., Nature 428:522-528(2004).

Aliases: BRCA 2 antibody, BRCA1/BRCA2 containing complex subunit 2 antibody, Brca2 antibody, BRCA2, DNA repair associated antibody, BRCA2_HUMAN antibody, BRCC 2 antibody, BRCC2 antibody, Breast and ovarian cancer susceptibility gene early onset antibody, breast and ovarian cancer susceptibility protein 2 antibody, Breast cancer 2 early onset antibody, Breast Cancer 2 tumor suppressor antibody, Breast cancer susceptibility protein BRCA2 antibody, Breast cancer type 2 susceptibility protein antibody, BROVCA2 antibody, FACD antibody, FAD 1 antibody, FAD antibody, FAD1 antibody, FANCB antibody, FANCD 1 antibody, FANCD antibody, FANCD1 antibody, FANCD1 gene antibody, Fanconi anemia complementation group D1 antibody, Fanconi anemia group D1 protein antibody, GLM3 antibody, mutant BRCA2 antibody, OTTHUMP00000018803 antibody, OTTHUMP00000042401 antibody, PNCA2 antibody, XRCC11 antibody

UniProt:

[P51587](#)

Pathways:

[DNA Damage Repair](#), [M Phase](#), [Maintenance of Protein Location](#)

Application Details

Application Notes:

WB:1:500-1:1000,

Restrictions:

For Research Use only

Handling

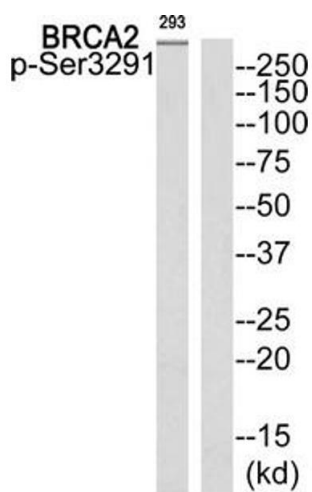
Format:

Liquid

Handling

Buffer:	Rabbit IgG in phosphate buffered saline (without Mg ²⁺ and Ca ²⁺), pH 7.4, 150 mM NaCl, 0.02 % sodium azide and 50 % glycerol.
Preservative:	Sodium azide
Precaution of Use:	This product contains Sodium azide: a POISONOUS AND HAZARDOUS SUBSTANCE which should be handled by trained staff only.
Storage:	-20 °C,-80 °C
Storage Comment:	Upon receipt, store at -20°C or -80°C. Avoid repeated freeze.

Images



Western Blotting

Image 1. Western blot analysis of extracts from 293 cells using BRCA2 (Phospho-Ser3291) Antibody. The lane on the right is treated with the antigen-specific peptide.