

Datasheet for ABIN7138577  
**anti-Connexin 43/GJA1 antibody (pSer368)**



[Go to Product page](#)

2 Images

## Overview

Quantity:	100 µL
Target:	Connexin 43/GJA1 (GJA1)
Binding Specificity:	pSer368
Reactivity:	Human
Host:	Rabbit
Clonality:	Polyclonal
Conjugate:	This Connexin 43/GJA1 antibody is un-conjugated
Application:	Western Blotting (WB), Immunohistochemistry (IHC), ELISA

## Product Details

Immunogen:	Peptide sequence around phosphorylation site of serine 368(R-A-S(p)-S-R) derived from Human Connexin 43.
Isotype:	IgG
Cross-Reactivity:	Human, Mouse, Rat
Purification:	Antibodies were produced by immunizing rabbits with synthetic phosphopeptide and KLH conjugates. Antibodies were purified by affinity-chromatography using epitope-specific phosphopeptide. Non-phospho specific antibodies were removed by chromatography using

## Target Details

Target:	Connexin 43/GJA1 (GJA1)
Alternative Name:	GJA1 ( <a href="#">GJA1 Products</a> )

## Target Details

---

Background:

Background:

One gap junction consists of a cluster of closely packed pairs of transmembrane channels, the connexons, through which materials of low MW diffuse from one cell to a neighboring cell. May play a critical role in the physiology of hearing by participating in the recycling of potassium to the cochlear endolymph.

Joell L. Solan<sup>1</sup>, et al. (2003) Cell Science 116: 2203-2211

Satoshi Matsushita, et al. (2006) Histochemistry and Cytochemistry 54 (3): 343-353,

Xiaoyong Bao, et al. (2004) Cell Physiol 286: C647-C654

W. E. I. Li, et al. (1998) European Journal of Neuroscience 10: 2444

Aliases: Connexin 43 antibody; Connexin-43 antibody; Cx 43 antibody; Cx43 antibody; CXA1\_HUMAN antibody; DFNB38 antibody; Gap junction 43 kDa heart protein antibody; Gap junction alpha-1 protein antibody; Gap junction protein alpha 1 43kDa (connexin 43) antibody; Gap junction protein alpha 1 43kDa antibody; Gap junction protein alpha like antibody; GJA 1 antibody; Gja1 antibody; GJAL antibody; ODD antibody; ODDD antibody; ODOD antibody; SDTY3 antibody

UniProt:

[P17302](#)

Pathways:

[MAPK Signaling](#), [Myometrial Relaxation and Contraction](#), [Cell-Cell Junction Organization](#)

## Application Details

---

Application Notes:

WB:1:500-1:1000, IHC:1:50-1:100,

Restrictions:

For Research Use only

## Handling

---

Format:

Liquid

Buffer:

Supplied at 1.0 mg/mL in phosphate buffered saline (without Mg<sup>2+</sup> and Ca<sup>2+</sup>), pH 7.4, 150 mM NaCl, 0.02 % sodium azide and 50 % glycerol.

Preservative:

Sodium azide

Precaution of Use:

This product contains Sodium azide: a POISONOUS AND HAZARDOUS SUBSTANCE which should be handled by trained staff only.

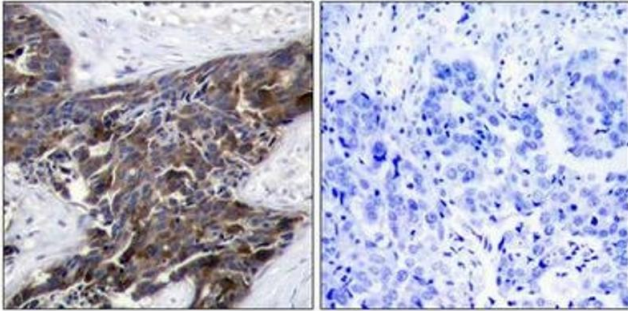
Storage:

-20 °C,-80 °C

## Handling

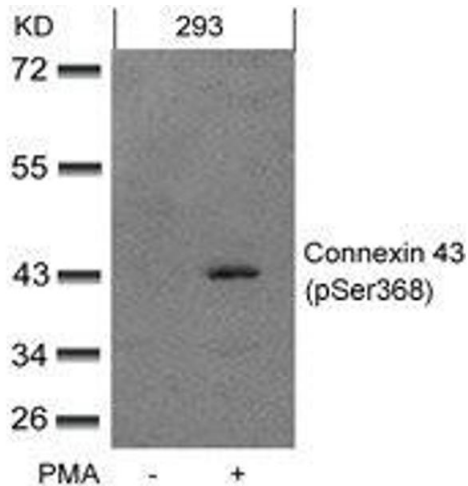
Storage Comment: Upon receipt, store at -20°C or -80°C. Avoid repeated freeze.

## Images



### Immunohistochemistry

**Image 1.** Immunohistochemical analysis of paraffin-embedded human breast carcinoma tissue using Connexin 43(Phospho-Ser367) Antibody(left) or the same antibody preincubated with blocking peptide(right).



### Western Blotting

**Image 2.** Western blot analysis of extracts from 293 cells untreated or treated with PMA using Connexin 43(phospho-Ser368) Antibody.