

Datasheet for ABIN7138589
anti-ELK1 antibody (pSer383)[Go to Product page](#)

2 Images

Overview

Quantity:	100 µL
Target:	ELK1
Binding Specificity:	pSer383
Reactivity:	Human
Host:	Rabbit
Clonality:	Polyclonal
Conjugate:	This ELK1 antibody is un-conjugated
Application:	Western Blotting (WB), Immunohistochemistry (IHC), ELISA

Product Details

Immunogen:	Peptide sequence around phosphorylation site of serine 383 (T-L-S(p)-P-I) derived from Human Elk-1.
Isotype:	IgG
Cross-Reactivity:	Human, Mouse, Rat
Purification:	Antibodies were produced by immunizing rabbits with synthetic phosphopeptide and KLH conjugates. Antibodies were purified by affinity-chromatography using epitope-specific phosphopeptide. Non-phospho specific antibodies were removed by chromatography using

Target Details

Target:	ELK1
Alternative Name:	ELK1 (ELK1 Products)

Target Details

Background:	<p>Background: Elk-1 is a member of the Ets family of transcription factors and of the ternary complex factor (TCF) subfamily. Proteins of the TCF subfamily form a ternary complex by binding to the the serum response factor and the serum reponse element in the promoter of the c-fos proto-oncogene. The protein encoded by this gene is a nuclear target for the ras-raf-MAPK signaling cascade. Iternatively spliced transcript variants encoding the same protein have been found for this gene.</p> <p>Xing J, et al. (1996) Science. 273(5277): 959-963.</p> <p>Janknecht R, et al. (1993) EMBO J. 12(13): 5097-5104.</p> <p>Marais R, et al. (1993) Cell 73: 381-393.</p> <p>Kortenjann M, et al. (1994) Mol Cell Biol. 14: 4815-4824.</p> <p>Cavigelli M, et al. (1995) EMBO J. 14: 5957-5964.</p> <p>Aliases: ELK 1 antibody, Elk1 antibody, ELK1 member of ETS oncogene family antibody, ELK1 protein antibody, ELK1, ETS transcription factor antibody, ELK1_HUMAN antibody, ELK2 member of ETS oncogene family antibody, ETS domain containing protein Elk 1 antibody, ETS domain containing protein Elk1 antibody, ETS domain protein Elk1 antibody, ETS domain-containing protein Elk-1 antibody, ETS like gene 1 antibody, Member of ETS oncogene family antibody, Oncogene Elk1 antibody, Tyrosine kinase (ELK1) oncogene antibody</p>
UniProt:	P19419
Pathways:	MAPK Signaling , Neurotrophin Signaling Pathway , Activation of Innate immune Response , Toll-Like Receptors Cascades , Signaling of Hepatocyte Growth Factor Receptor , BCR Signaling

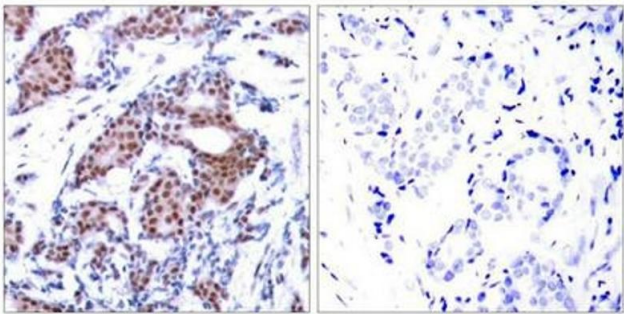
Application Details

Application Notes:	WB:1:500-1:1000, IHC:1:50-1:100,
Restrictions:	For Research Use only
Handling	
Format:	Liquid
Buffer:	Supplied at 1.0 mg/mL in phosphate buffered saline (without Mg ²⁺ and Ca ²⁺), pH 7.4, 150 mM NaCl, 0.02 % sodium azide and 50 % glycerol.
Preservative:	Sodium azide
Precaution of Use:	This product contains Sodium azide: a POISONOUS AND HAZARDOUS SUBSTANCE which should be handled by trained staff only.

Handling

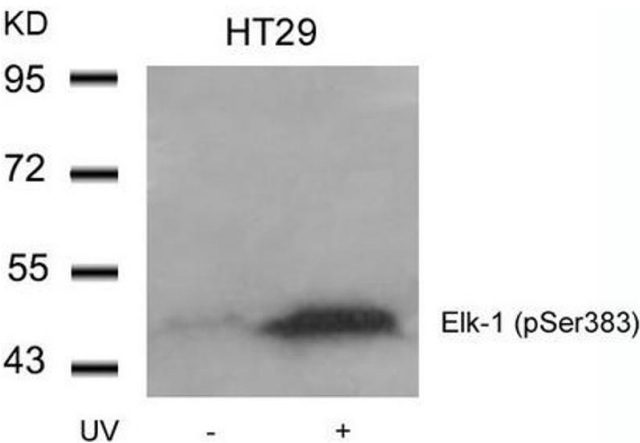
Storage:	-20 °C,-80 °C
Storage Comment:	Upon receipt, store at -20°C or -80°C. Avoid repeated freeze.

Images



Immunohistochemistry

Image 1. Immunohistochemical analysis of paraffin-embedded human breast carcinoma tissue using Elk-1(Phospho-Ser383) Antibody(left) or the same antibody preincubated with blocking peptide(right).



Western Blotting

Image 2. Western blot analysis of extracts from HT29 cells untreated or treated with UV using Elk-1(Phospho-Ser383) Antibody.