

Datasheet for ABIN7138601
anti-MAP3K8 antibody (pSer400)[Go to Product page](#)

1 Image

Overview

Quantity:	100 µL
Target:	MAP3K8
Binding Specificity:	pSer400
Reactivity:	Human
Host:	Rabbit
Clonality:	Polyclonal
Conjugate:	This MAP3K8 antibody is un-conjugated
Application:	ELISA, Immunohistochemistry (IHC)

Product Details

Immunogen:	Peptide sequence around phosphorylation site of Serine 400(C-Q-S(p)-L-D) derived from HumanMAP3K8.
Isotype:	IgG
Cross-Reactivity:	Human, Mouse, Rat
Purification:	Antibodies were produced by immunizing rabbits with synthetic phosphopeptide and KLH conjugates. Antibodies were purified by affinity-chromatography using epitope-specific phosphopeptide. Non-phospho specific antibodies were removed by chromatography using

Target Details

Target:	MAP3K8
Alternative Name:	MAP3K8 (MAP3K8 Products)

Target Details

Background:	<p>Background:</p> <p>This gene was identified by its oncogenic transforming activity in cells. The encoded protein is a member of the serine/threonine protein kinase family. This kinase can activate both the MAP kinase and JNK kinase pathways. This kinase was shown to activate IκB kinases, and thus induce the nuclear production of NF-κB. This kinase was also found to promote the production of TNF-α and IL-2 during T lymphocyte activation. Studies of a similar gene in rat suggested the direct involvement of this kinase in the proteolysis of NF-κB1,p105 (NFKB1).</p> <p>Miyoshi J., Mol. Cell. Biol. 11:4088-4096(1991).</p> <p>Aoki M., J. Biol. Chem. 268:22723-22732(1993).</p> <p>Chan A.M.,Oncogene 8:1329-1333(1993).</p> <p>Aliases: AURA2 antibody, c COT antibody, Cancer Osaka thyroid oncogene antibody, CCOT antibody, COT antibody, COT proto oncogene serine/threonine protein kinase antibody, EST antibody, ESTF antibody, Ewing sarcoma transformant antibody, FLJ10486 antibody, M3K8_HUMAN antibody, MAP3K 8 antibody, MAP3K8 antibody, MEKK8 antibody, Mitogen activated protein kinase kinase kinase 8 antibody, Mitogen-activated protein kinase kinase kinase 8 antibody, Proto oncogene cCot antibody, Proto-oncogene c-Cot antibody, Serine/threonine protein kinase cot antibody, Serine/threonine-protein kinase cot antibody, TPL 2 antibody, TPL-2 antibody, TPL2 antibody, Tumor progression locus 2 antibody</p>
-------------	--

UniProt:	P41279
Pathways:	PI3K-Akt Signaling , TCR Signaling

Application Details

Application Notes:	IHC:1:50-1:100,
Restrictions:	For Research Use only

Handling

Format:	Liquid
Buffer:	Rabbit IgG in phosphate buffered saline (without Mg ²⁺ and Ca ²⁺), pH 7.4, 150 mM NaCl, 0.02 % sodium azide and 50 % glycerol.
Preservative:	Sodium azide
Precaution of Use:	This product contains Sodium azide: a POISONOUS AND HAZARDOUS SUBSTANCE which

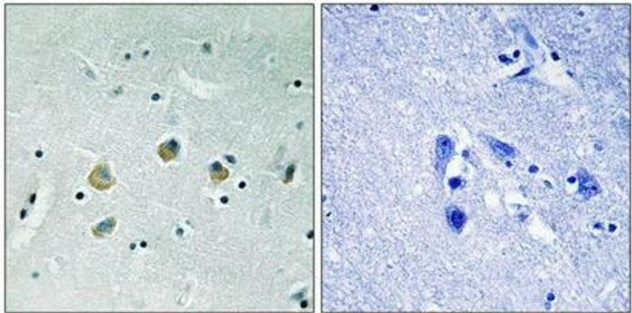
Handling

should be handled by trained staff only.

Storage: -20 °C,-80 °C

Storage Comment: Upon receipt, store at -20°C or -80°C. Avoid repeated freeze.

Images



Immunohistochemistry

Image 1. Immunohistochemical analysis of paraffin-embedded human brain tissue using MAP3K8 (Phospho-Ser400) antibody (left) or the same antibody preincubated with blocking peptide (right).