

Datasheet for ABIN7138604
anti-MAPT antibody (pSer404)[Go to Product page](#)

4 Images

Overview

Quantity:	100 µL
Target:	MAPT
Binding Specificity:	pSer404
Reactivity:	Human
Host:	Rabbit
Clonality:	Polyclonal
Conjugate:	This MAPT antibody is un-conjugated
Application:	Western Blotting (WB), ELISA, Immunohistochemistry (IHC), Immunofluorescence (IF)

Product Details

Immunogen:	Peptide sequence around phosphorylation site of serine 404 (D-T-S(p)-P-R) derived from Human Tau.
Isotype:	IgG
Cross-Reactivity:	Human, Mouse, Rat
Purification:	Antibodies were produced by immunizing rabbits with synthetic phosphopeptide and KLH conjugates. Antibodies were purified by affinity-chromatography using epitope-specific phosphopeptide. Non-phospho specific antibodies were removed by chromatography using

Target Details

Target:	MAPT
Alternative Name:	MAPT (MAPT Products)

Target Details

Background:

Background:

Promotes microtubule assembly and stability, and might be involved in the establishment and maintenance of neuronal polarity. The C-terminus binds axonal microtubules while the N-terminus binds neural plasma membrane components, suggesting that tau functions as a linker protein between both. Axonal polarity is predetermined by tau localization (in the neuronal cell) in the domain of the cell body defined by the centrosome. The short isoforms allow plasticity of the cytoskeleton whereas the longer isoforms may preferentially play a role in its stabilization.

Li G, Yin H, et.al .(2004) J Biol Chem , 279(16): 15938-45.

Noble W, et al. (2003) Neuron , 38(4): 555-65.

Giasson BI, et al.(2002). Biochemistry, 41(51): 15376-87.

Lee G., et.al. (1989). Neuron 2:1615-1624.

Andreadis A.et.al. (1992) Biochemistry 31:10626-10633.

Aliases: A1413597 antibody, AW045860 antibody, DDPAC antibody, FLJ31424 antibody, FTDP 17 antibody, G protein beta1/gamma2 subunit interacting factor 1 antibody, MAPT antibody, MAPTL antibody, MGC134287 antibody, MGC138549 antibody, MGC156663 antibody, Microtubule associated protein tau antibody, Microtubule associated protein tau isoform 4 antibody, Microtubule-associated protein tau antibody, MSTD antibody, Mtapt antibody, MTBT1 antibody, MTBT2 antibody, Neurofibrillary tangle protein antibody, Paired helical filament tau antibody, Paired helical filament-tau antibody, PHF tau antibody, PHF-tau antibody, PPND antibody, PPP1R103 antibody, Protein phosphatase 1, regulatory subunit 103 antibody, pTau antibody, RNPTAU antibody, TAU antibody, TAU_HUMAN antibody, Tauopathy and respiratory failure antibody, Tauopathy and respiratory failure, included antibody

UniProt:

[P10636](#)

Pathways:

[MAPK Signaling](#), [Microtubule Dynamics](#), [M Phase](#), [Regulation of Cell Size](#)

Application Details

Application Notes:

WB:1:500-1:1000, IHC:1:50-1:100, IF:1:100-1:200,

Restrictions:

For Research Use only

Handling

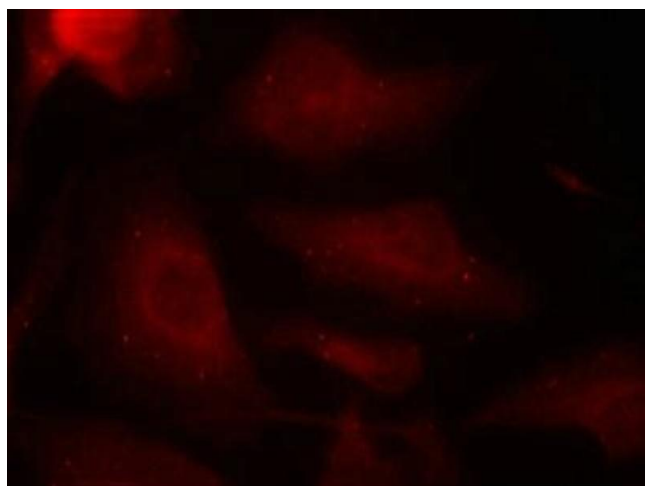
Format:

Liquid

Handling

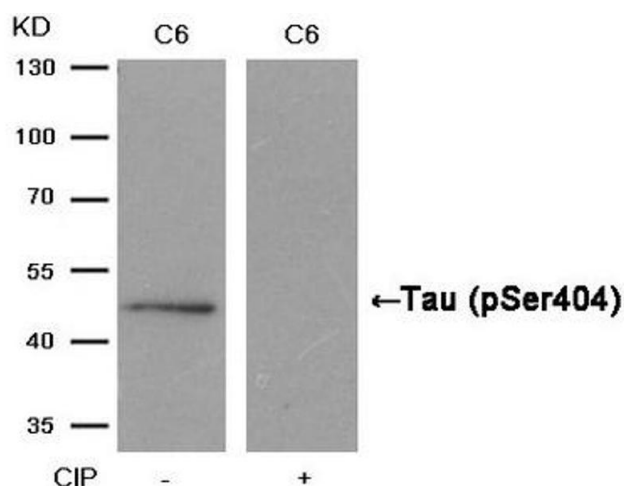
Buffer:	Supplied at 1.0 mg/mL in phosphate buffered saline (without Mg ²⁺ and Ca ²⁺), pH 7.4, 150 mM NaCl, 0.02 % sodium azide and 50 % glycerol.
Preservative:	Sodium azide
Precaution of Use:	This product contains Sodium azide: a POISONOUS AND HAZARDOUS SUBSTANCE which should be handled by trained staff only.
Storage:	-20 °C, -80 °C
Storage Comment:	Upon receipt, store at -20°C or -80°C. Avoid repeated freeze.

Images



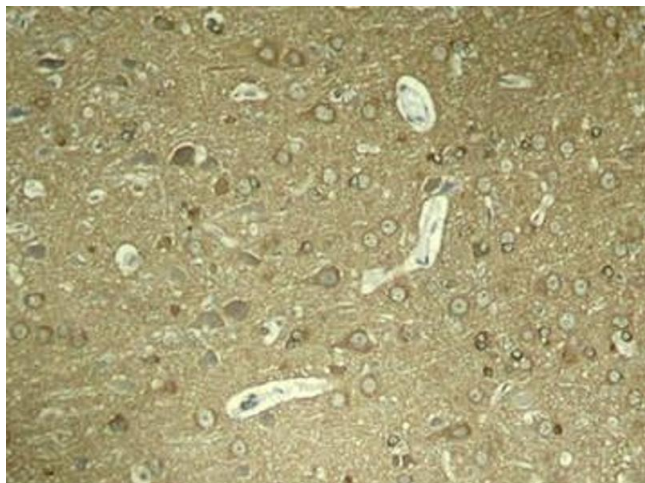
Immunofluorescence

Image 1. Immunofluorescence staining of methanol-fixed HeLa cells using Tau(Phospho-Ser404) Antibody.



Western Blotting

Image 2. Western blot analysis of extracts from C6 cells, treated with calf intestinal phosphatase (CIP), using Tau (Phospho-Ser404) Antibody.



Immunohistochemistry

Image 3. Immunohistochemical analysis of paraffin-embedded rat hippocampal region tissue from a model with Alzheimer

Please check the [product details page](#) for more images. Overall 4 images are available for ABIN7138604.