

Datasheet for ABIN7138607

**anti-beta Arrestin 1 antibody (pSer412)**[Go to Product page](#)**1** Image

## Overview

Quantity:	100 µL
Target:	beta Arrestin 1 (ARRB1)
Binding Specificity:	pSer412
Reactivity:	Human
Host:	Rabbit
Clonality:	Polyclonal
Conjugate:	This beta Arrestin 1 antibody is un-conjugated
Application:	Western Blotting (WB), Immunohistochemistry (IHC), ELISA

## Product Details

Immunogen:	Peptide sequence around phosphorylation site of Serine 412 (T-G-S(p)-P-Q) derived from Human Arrestin 1.
Isotype:	IgG
Cross-Reactivity:	Human
Purification:	Antibodies were produced by immunizing rabbits with synthetic phosphopeptide and KLH conjugates. Antibodies were purified by affinity-chromatography using epitope-specific phosphopeptide. Non-phospho specific antibodies were removed by chromatography using

## Target Details

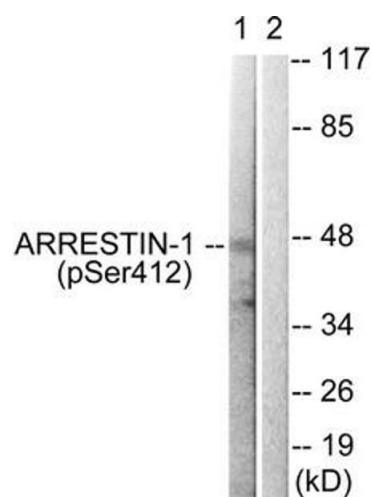
Target:	beta Arrestin 1 (ARRB1)
Alternative Name:	ARRB1 ( <a href="#">ARRB1 Products</a> )

## Target Details

Background:	<p>Background:</p> <p>Functions in regulating agonist-mediated G-protein coupled receptor (GPCR) signaling by mediating both receptor desensitization and resensitization processes. During homologous desensitization, beta-arrestins bind to the GPRK-phosphorylated receptor and sterically preclude its coupling to the cognate G-protein, the binding appears to require additional receptor determinants exposed only in the active receptor conformation.</p> <p>Greg Buchanan. AACR Meeting Abstracts, Apr 2006, 2006: 430.</p> <p>D. Alex Groarke. Mol. Pharmacol., Feb 2001, 59: 375.</p> <p>Karen McConalogue. Mol. Biol. Cell, Aug 1998, 9: 2305.</p> <p>Maria Stella Lombardi. Stroke, Apr 2004, 35: 981 - 986.</p> <p>Aliases: ARB1 antibody, ARR1 antibody, ARRB1 antibody, ARRB1_HUMAN antibody, Arrestin 2 antibody, Arrestin beta 1 antibody, Arrestin beta-1 antibody, Beta-arrestin-1 antibody</p>
UniProt:	<a href="#">P49407</a>
Pathways:	<a href="#">Positive Regulation of Peptide Hormone Secretion</a> , <a href="#">Nuclear Hormone Receptor Binding</a> , <a href="#">cAMP Metabolic Process</a> , <a href="#">Myometrial Relaxation and Contraction</a> , <a href="#">Synaptic Membrane</a> , <a href="#">Regulation of G-Protein Coupled Receptor Protein Signaling</a> , <a href="#">Phototransduction</a>

## Application Details

Application Notes:	WB:1:500-1:1000, IHC:1:50-1:100,
Restrictions:	For Research Use only
Handling	
Format:	Liquid
Buffer:	Rabbit IgG in phosphate buffered saline (without Mg <sup>2+</sup> and Ca <sup>2+</sup> ), pH 7.4, 150 mM NaCl, 0.02 % sodium azide and 50 % glycerol.
Preservative:	Sodium azide
Precaution of Use:	This product contains Sodium azide: a POISONOUS AND HAZARDOUS SUBSTANCE which should be handled by trained staff only.
Storage:	-20 °C,-80 °C
Storage Comment:	Upon receipt, store at -20°C or -80°C. Avoid repeated freeze.



Western Blotting

**Image 1.** Western blot analysis of extracts from COS7 cells treated with Etoposide using Arrestin 1 (Phospho-Ser412) Antibody. The lane on the right is treated with the antigen-specific peptide.