

Datasheet for ABIN7138609  
**anti-Girdin antibody (pSer417)**[Go to Product page](#)

## 1 Image

## Overview

Quantity:	100 µL
Target:	Girdin (CCDC88A)
Binding Specificity:	pSer417
Reactivity:	Human
Host:	Rabbit
Clonality:	Polyclonal
Conjugate:	This Girdin antibody is un-conjugated
Application:	ELISA, Immunohistochemistry (IHC)

## Product Details

Immunogen:	Peptide sequence around phosphorylation site of Serine 417(L-E-M(p)-A-Q) derived from Human Girdin .
Isotype:	IgG
Cross-Reactivity:	Human, Mouse
Purification:	Antibodies were produced by immunizing rabbits with synthetic phosphopeptide and KLH conjugates. Antibodies were purified by affinity-chromatography using epitope-specific phosphopeptide. Non-phospho specific antibodies were removed by chromatography using

## Target Details

Target:	Girdin (CCDC88A)
Alternative Name:	CCDC88A ( <a href="#">CCDC88A Products</a> )

## Target Details

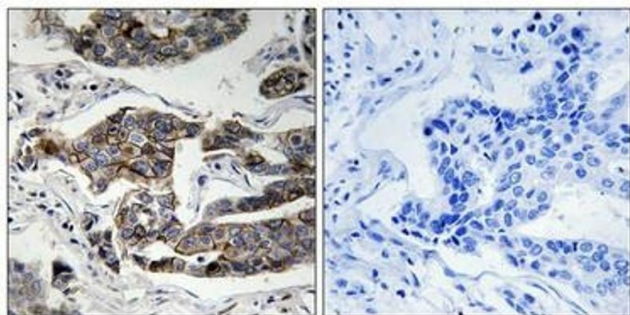
Background:	<p>Background:</p> <p>girdin IS a ubiquitously expressed actin binding protein that plays an important role in the formation of stress fibers and lamellipodia. Subsequent to phosphorylation by Akt, Girdin accumulates at the leading edge of migrating cells and appears to be crucial for the integrity of the actin cytoskeleton and for cell migration.</p> <p>Enomoto A., Dev. Cell 9:389-402(2005).</p> <p>Simpson F., Traffic 6:442-458(2005).</p> <p>Hillier L.W., Nature 434:724-731(2005).</p> <p>Aliases: AKT iphosphorylation enhancer antibody, Akt phosphorylation enhancer antibody, APE antibody, Ccdc88a antibody, Coiled coil domain containing 88A antibody, Coiled coil domain containing protein 88A antibody, Coiled-coil domain-containing protein 88A antibody, FLJ10392 antibody, G alpha interacting vesicle associated protein antibody, G alpha-interacting vesicle-associated protein antibody, Galpha interacting vesicle associated protein antibody, Girders of actin filament antibody, Girdin antibody, GIV antibody, GRDN antibody, GRDN_HUMAN antibody, HkRP1 antibody, Hook related protein 1 antibody, Hook-related protein 1 antibody, KIAA1212 antibody</p>
UniProt:	<a href="#">Q3V6T2</a>

## Application Details

Application Notes:	IHC:1:50-1:100,
Restrictions:	For Research Use only

## Handling

Format:	Liquid
Buffer:	Rabbit IgG in phosphate buffered saline (without Mg <sup>2+</sup> and Ca <sup>2+</sup> ), pH 7.4, 150 mM NaCl, 0.02 % sodium azide and 50 % glycerol.
Preservative:	Sodium azide
Precaution of Use:	This product contains Sodium azide: a POISONOUS AND HAZARDOUS SUBSTANCE which should be handled by trained staff only.
Storage:	-20 °C,-80 °C
Storage Comment:	Upon receipt, store at -20°C or -80°C. Avoid repeated freeze.



#### Immunohistochemistry

**Image 1.** Immunohistochemical analysis of paraffin-embedded human breast carcinoma tissue using Girdin (Phospho-Ser1417) antibody (left) or the same antibody preincubated with blocking peptide (right).