

Datasheet for ABIN7138613
anti-CTBP1 antibody (pSer422)[Go to Product page](#)

2 Images

Overview

Quantity:	100 µL
Target:	CTBP1
Binding Specificity:	pSer422
Reactivity:	Human
Host:	Rabbit
Clonality:	Polyclonal
Conjugate:	This CTBP1 antibody is un-conjugated
Application:	Western Blotting (WB), ELISA, Immunohistochemistry (IHC)

Product Details

Immunogen:	Peptide sequence around phosphorylation site of Serine 422(A-P-S(p)-P-G) derived from Human CtBP1.
Isotype:	IgG
Cross-Reactivity:	Human, Mouse, Rat
Purification:	Antibodies were produced by immunizing rabbits with synthetic phosphopeptide and KLH conjugates. Antibodies were purified by affinity-chromatography using epitope-specific phosphopeptide. Non-phospho specific antibodies were removed by chromatography using

Target Details

Target:	CTBP1
Alternative Name:	CTBP1 (CTBP1 Products)

Target Details

Background:

Background:

This gene encodes a protein that binds to the C-terminus of adenovirus E1A proteins. This phosphoprotein is a transcriptional repressor and may play a role during cellular proliferation.

This protein and the product of a second closely related gene, CTBP2, can dimerize. Both proteins can also interact with a polycomb group protein complex which participates in regulation of gene expression during development. Alternative splicing of transcripts from this gene results in multiple transcript variants.

Schaeper U., Proc. Natl. Acad. Sci. U.S.A. 92:10467-10471(1995).

Sewalt R.G.A.B., Mol. Cell. Biol. 19:777-787(1999).

The MGC Project Team, Genome Res. 14:2121-2127(2004).

Aliases: BARS antibody, brefeldin A- ribosylated substrate antibody, C terminal binding protein 1 antibody, C-terminal-binding protein 1 antibody, CTBP antibody, CtBP1 antibody, CTBP1_HUMAN antibody, MGC104684 antibody

UniProt:

[Q13363](#)

Pathways:

[Retinoic Acid Receptor Signaling Pathway](#)

Application Details

Application Notes:

WB:1:500-1:1000, IHC:1:50-1:100,

Restrictions:

For Research Use only

Handling

Format:

Liquid

Buffer:

Rabbit IgG in phosphate buffered saline (without Mg²⁺ and Ca²⁺), pH 7.4, 150 mM NaCl, 0.02 % sodium azide and 50 % glycerol.

Preservative:

Sodium azide

Precaution of Use:

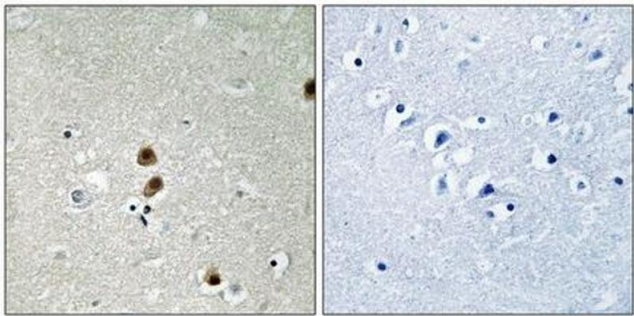
This product contains Sodium azide: a POISONOUS AND HAZARDOUS SUBSTANCE which should be handled by trained staff only.

Storage:

-20 °C, -80 °C

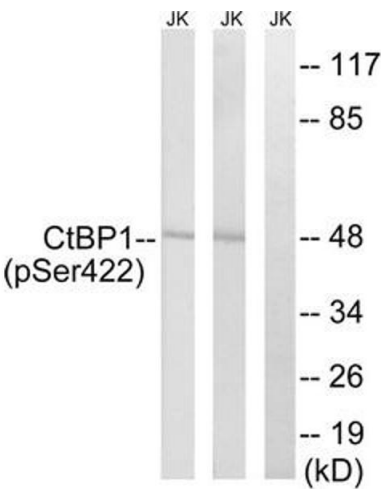
Storage Comment:

Upon receipt, store at -20°C or -80°C. Avoid repeated freeze.



Immunohistochemistry

Image 1. Immunohistochemical analysis of paraffin-embedded human brain tissue, using CtBP1 (Phospho-Ser422) antibody (left) or the same antibody preincubated with blocking peptide (right).



Western Blotting

Image 2. Western blot analysis of extracts from Jurkat cells treated with TNF using CtBP1 (Phospho-Ser422) Antibody. The lane on the right is treated with the antigen-specific peptide.