

Datasheet for ABIN7138633

**anti-AMPK alpha antibody (pSer487)**[Go to Product page](#)

## 4 Images

## Overview

Quantity:	100 µL
Target:	AMPK alpha (SNF1A)
Binding Specificity:	pSer487
Reactivity:	Human
Host:	Rabbit
Clonality:	Polyclonal
Conjugate:	This AMPK alpha antibody is un-conjugated
Application:	Western Blotting (WB), Immunohistochemistry (IHC), ELISA, Immunofluorescence (IF)

## Product Details

Immunogen:	Peptide sequence around phosphorylation site of serine 487 (S-G- SP-V-S) derived from Human AMPKα1.
Isotype:	IgG
Cross-Reactivity:	Human, Mouse, Rat
Purification:	Antibodies were produced by immunizing rabbits with synthetic phosphopeptide and KLH conjugates. Antibodies were purified by affinity-chromatography using epitope-specific phosphopeptide. Non-phospho specific antibodies were removed by chromatography using

## Target Details

Target:	AMPK alpha (SNF1A)
Alternative Name:	PRKAA1/PRKAA2 ( <a href="#">SNF1A Products</a> )

## Target Details

### Background:

### Background:

Responsible for the regulation of fatty acid synthesis by phosphorylation of acetyl-CoA carboxylase. It also regulates cholesterol synthesis via phosphorylation and inactivation of hormone-sensitive lipase and hydroxymethylglutaryl-CoA reductase. Appears to act as a metabolic stress-sensing protein kinase switching off biosynthetic pathways when cellular ATP levels are depleted and when 5'-AMP rises in response to fuel limitation and/or hypoxia. This is a catalytic subunit.

Kim JE, et al. (2005) J Proteome Res. 4(4): 1339-1346.

Woods A, et al. (2003) J Biol Chem. 278(31): 28434-28442.

Aliases: 5 AMP activated protein kinase alpha 1 catalytic subunit antibody, 5 AMP activated protein kinase catalytic alpha 1 chain antibody, 5' AMP activated protein kinase catalytic subunit alpha 1 antibody, 5'-AMP-activated protein kinase catalytic subunit alpha-1 antibody, AAPK1 antibody, AAPK1\_HUMAN antibody, ACACA kinase antibody, acetyl CoA carboxylase kinase antibody, AI194361 antibody, AI450832 antibody, AL024255 antibody, AMP -activate kinase alpha 1 subunit antibody, AMP-activate kinase alpha 1 subunit antibody, AMP-activated protein kinase, catalytic, alpha -1 antibody, AMPK 1 antibody, AMPK alpha 1 antibody, AMPK alpha 1 chain antibody, AMPK antibody, AMPK subunit alpha 1 antibody, AMPK subunit alpha-1 antibody, AMPK1 antibody, AMPKa1 antibody, AMPKalpha1 antibody, C130083N04Rik antibody, cb116 antibody, EC 2.7.11.1 antibody, HMG CoA reductase kinase antibody, HMGCR kinase antibody, hormone sensitive lipase kinase antibody, Hydroxymethylglutaryl CoA reductase kinase antibody, im:7154392 antibody, kinase AMPK alpha1 antibody, MGC33776 antibody, MGC57364 antibody, OTTHUMP00000161795 antibody, OTTHUMP00000161796 antibody, PRKAA 1 antibody, PRKAA1 antibody, Protein kinase AMP activated alpha 1 catalytic subunit antibody, SNF1-like protein AMPK antibody, SNF1A antibody, Tau protein kinase PRKAA1 antibody, wu:fa94c10 antibody

### UniProt:

[Q13131](#)

### Pathways:

[Warburg Effect](#)

## Application Details

### Application Notes:

WB:1:500-1:1000, IHC:1:50-1:100, IF:1:100-1:200,

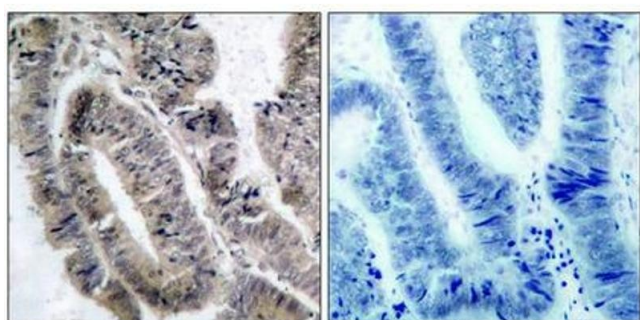
### Restrictions:

For Research Use only

## Handling

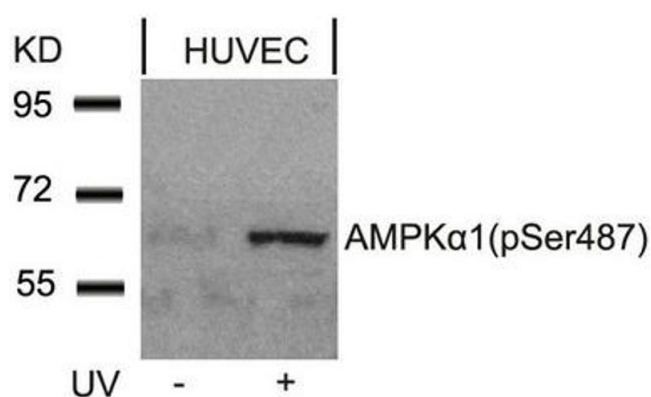
Format:	Liquid
Buffer:	Supplied at 1.0 mg/mL in phosphate buffered saline (without Mg <sup>2+</sup> and Ca <sup>2+</sup> ), pH 7.4, 150 mM NaCl, 0.02 % sodium azide and 50 % glycerol.
Preservative:	Sodium azide
Precaution of Use:	This product contains Sodium azide: a POISONOUS AND HAZARDOUS SUBSTANCE which should be handled by trained staff only.
Storage:	-20 °C,-80 °C
Storage Comment:	Upon receipt, store at -20°C or -80°C. Avoid repeated freeze.

## Images



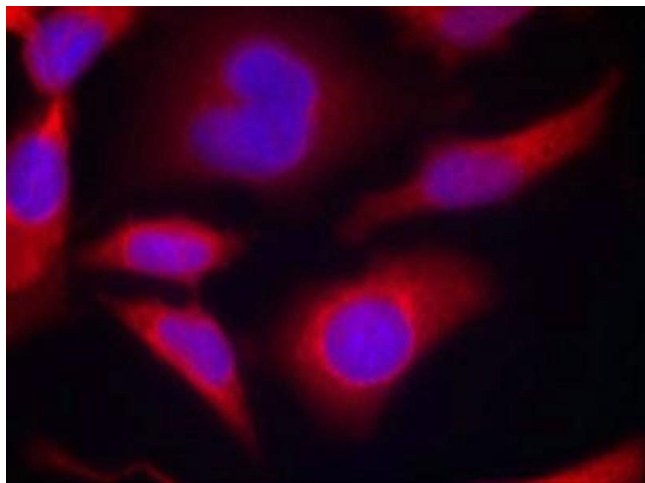
### Immunohistochemistry

**Image 1.** Immunohistochemical analysis of paraffin-embedded human colon carcinoma tissue using AMPKα1(Phospho-Ser487)Antibody(left) or the same antibody preincubated with blocking peptide(right).



### Western Blotting

**Image 2.** Western blot analysis of extracts from HUVEC cells untreated or treated with UV using AMPKα1(Phospho-Ser487)Antibody.



#### Immunofluorescence

**Image 3.** Immunofluorescence staining of methanol-fixed HeLa cells using AMPKα1(Phospho-Ser487)Antibody.

Please check the [product details page](#) for more images. Overall 4 images are available for ABIN7138633.