

Datasheet for ABIN7138637
anti-c-Rel antibody (pSer503)[Go to Product page](#)

1 Image

Overview

Quantity:	100 µL
Target:	c-Rel
Binding Specificity:	pSer503
Reactivity:	Human
Host:	Rabbit
Clonality:	Polyclonal
Conjugate:	This c-Rel antibody is un-conjugated
Application:	ELISA, Immunofluorescence (IF)

Product Details

Immunogen:	Peptide sequence around phosphorylation site of serine 503 (T-S-S(p)-D-S) derived from Human Rel.
Isotype:	IgG
Cross-Reactivity:	Human
Purification:	Antibodies were produced by immunizing rabbits with synthetic phosphopeptide and KLH conjugates. Antibodies were purified by affinity-chromatography using epitope-specific phosphopeptide. Non-phospho specific antibodies were removed by chromatography using

Target Details

Target:	c-Rel
Alternative Name:	REL (c-Rel Products)

Target Details

Background:	<p>Background: The REL gene encodes c-Rel, a transcription factor that is a member of the Rel/NFkB family, which also includes RELA (MIM 164014), RELB (604758), NFkB1 (MIM 164011), and NFkB2 (MIM 164012). These proteins are related through a highly conserved N-terminal region termed the 'Rel domain,' which is responsible for DNA binding, dimerization, nuclear localization, and binding to the NFkB inhibitor (MIM 164008) (Belguise and Sonenshein, 2007 (PubMed 18037997)).</p> <p>Baeuerle, P.A. and Henkel, T. (1994) Annu Rev Immunol 12, 141-79.</p> <p>Baeuerle, P.A. and Baltimore, D. (1996) Cell 87, 13-20.</p> <p>Haskill, S. et al. (1991) Cell 65, 1281-9.</p> <p>Thompson, J.E. et al. (1995) Cell 80, 573-82.</p> <p>Aliases: Avian reticuloendotheliosis antibody, C REL antibody, C Rel protein antibody, c Rel proto oncogene protein antibody, Oncogene REL antibody, Oncogene REL avian reticuloendotheliosis antibody, Proto-oncogene c-Rel antibody, REL antibody, REL_HUMAN antibody, v rel avian reticuloendotheliosis viral oncogene homolog antibody, v rel reticuloendotheliosis viral oncogene homolog antibody, V rel reticuloendotheliosis viral oncogene homolog (avian) antibody</p>
-------------	--

UniProt:	Q04864
----------	------------------------

Application Details

Application Notes:	IF:1:100-1:200,
Restrictions:	For Research Use only

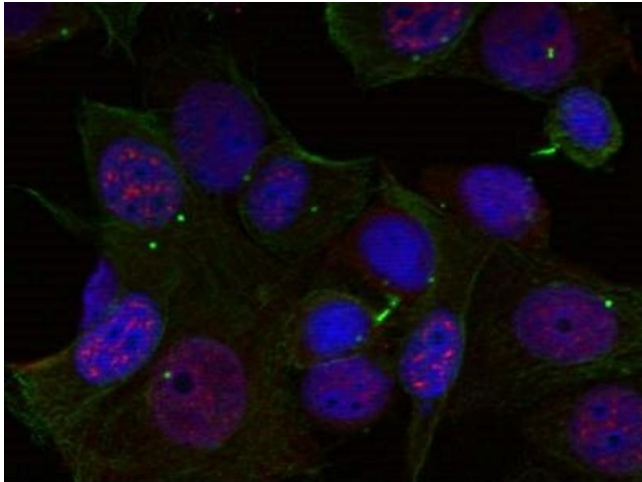
Handling

Format:	Liquid
Buffer:	Supplied at 1.0 mg/mL in phosphate buffered saline (without Mg ²⁺ and Ca ²⁺), pH 7.4, 150 mM NaCl, 0.02 % sodium azide and 50 % glycerol.
Preservative:	Sodium azide
Precaution of Use:	This product contains Sodium azide: a POISONOUS AND HAZARDOUS SUBSTANCE which should be handled by trained staff only.
Storage:	-20 °C,-80 °C

Handling

Storage Comment: Upon receipt, store at -20°C or -80°C. Avoid repeated freeze.

Images



Immunofluorescence

Image 1. Immunofluorescence staining of methanol-fixed HeLa cells using Rel(Phospho-Ser503) Antibody.