



[Go to Product page](#)

Datasheet for ABIN7138638  
**anti-EIF2S1 antibody (pSer51)**

4 Images

Overview

Quantity:	100 µL
Target:	EIF2S1
Binding Specificity:	pSer51
Reactivity:	Human
Host:	Rabbit
Clonality:	Polyclonal
Conjugate:	This EIF2S1 antibody is un-conjugated
Application:	Western Blotting (WB), Immunohistochemistry (IHC), Immunofluorescence (IF), ELISA

Product Details

Immunogen:	Peptide sequence around phosphorylation site of serine 51 (E-L-S(p)-R-R) derived from Human eIF2a.
Isotype:	IgG
Cross-Reactivity:	Human, Mouse, Rat
Purification:	Antibodies were produced by immunizing rabbits with synthetic phosphopeptide and KLH conjugates. Antibodies were purified by affinity-chromatography using epitope-specific phosphopeptide. Non-phospho specific antibodies were removed by chromatography using

Target Details

Target:	EIF2S1
Alternative Name:	EIF2S1 ( <a href="#">EIF2S1 Products</a> )

## Target Details

---

Background:

Background:

Functions in the early steps of protein synthesis by forming a ternary complex with GTP and initiator tRNA. This complex binds to a 40S ribosomal subunit, followed by mRNA binding to form a 43S preinitiation complex. Junction of the 60S ribosomal subunit to form the 80S initiation complex is preceded by hydrolysis of the GTP bound to eIF-2 and release of an eIF-2-GDP binary complex. In order for eIF-2 to recycle and catalyze another round of initiation, the GDP bound to eIF-2 must exchange with GTP by way of a reaction catalyzed by eIF-2B.

Xavier Saelens, et al. (2001) J. Biol. Chem, 276: 41620 - 41628.

Hiroyuki Kubota, et al. (2003) J. Biol. Chem , 278: 20457 - 20460.

Shijian Chu, et al. (2006) Am J Physiol Lung Cell Mol Physiol , 291: L983 - L992.

Eileen Connolly, et al. (2006) Mol. Cell. Biol , 26: 3955 - 3965.

Aliases: EIF 2 alpha antibody, EIF 2 antibody, EIF 2A antibody, EIF 2alpha antibody, eIF-2-alpha antibody, eIF-2A antibody, EIF-2alpha antibody, EIF2 alpha antibody, EIF2 antibody, EIF2A antibody, EIF2S1 antibody, Eukaryotic translation initiation factor 2 subunit 1 alpha 35 kDa antibody, Eukaryotic translation initiation factor 2 subunit 1 alpha antibody, Eukaryotic translation initiation factor 2 subunit 1 antibody, Eukaryotic translation initiation factor 2 subunit alpha antibody, IF2A\_HUMAN antibody

---

UniProt:

[P05198](#)

---

Pathways:

[Ribonucleoprotein Complex Subunit Organization](#), [ER-Nucleus Signaling](#), [Hepatitis C](#)

## Application Details

---

Application Notes:

WB:1:500-1:1000, IHC:1:50-1:100, IF:1:100-1:200,

---

Restrictions:

For Research Use only

## Handling

---

Format:

Liquid

---

Buffer:

Supplied at 1.0 mg/mL in phosphate buffered saline (without Mg<sup>2+</sup> and Ca<sup>2+</sup>), pH 7.4, 150 mM NaCl, 0.02 % sodium azide and 50 % glycerol.

---

Preservative:

Sodium azide

---

Precaution of Use:

This product contains Sodium azide: a POISONOUS AND HAZARDOUS SUBSTANCE which should be handled by trained staff only.

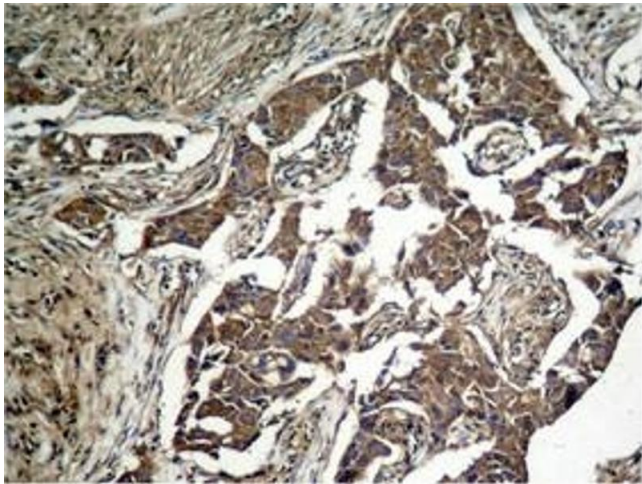
---

## Handling

Storage: -20 °C,-80 °C

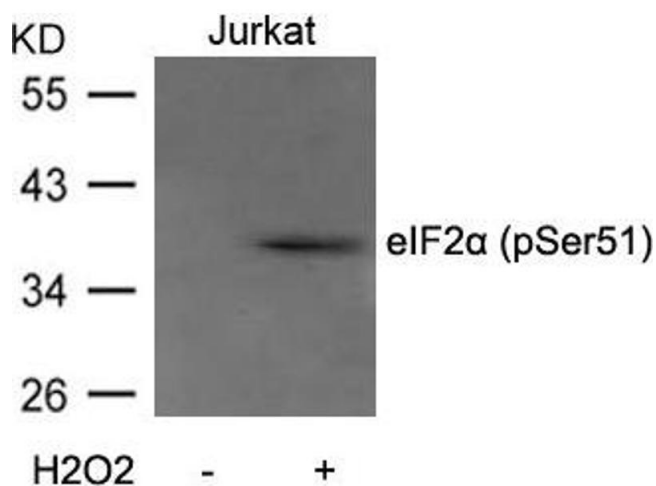
Storage Comment: Upon receipt, store at -20°C or -80°C. Avoid repeated freeze.

## Images



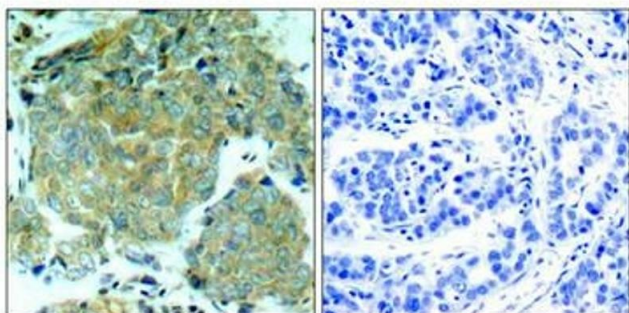
### Immunohistochemistry

**Image 1.** Immunohistochemical analysis of paraffin-embedded human lung carcinoma tissue, using eIF2α (Phospho-Ser51) Antibody.



### Western Blotting

**Image 2.** Western blot analysis of extracts from Jurkat cells untreated or treated with H<sub>2</sub>O<sub>2</sub> using eIF2α(Phospho-Ser51) Antibody.



### Immunohistochemistry

**Image 3.** Immunohistochemical analysis of paraffin-embedded human breast carcinoma tissue using eIF2α (Phospho-Ser51) Antibody (left) or the same antibody preincubated with blocking peptide (right).

Please check the [product details page](#) for more images. Overall 4 images are available for ABIN7138638.