



Datasheet for ABIN7138644
anti-DPYSL2 antibody (pSer522)



[Go to Product page](#)

1 Image

Overview

Quantity:	100 µL
Target:	DPYSL2
Binding Specificity:	pSer522
Reactivity:	Human
Host:	Rabbit
Clonality:	Polyclonal
Conjugate:	This DPYSL2 antibody is un-conjugated
Application:	Western Blotting (WB), ELISA

Product Details

Immunogen:	Peptide sequence around phosphorylation site of Serine 522(K-T-S(p)-P-A) derived from Human CRMP-2.
Isotype:	IgG
Cross-Reactivity:	Human, Mouse, Rat
Purification:	Antibodies were produced by immunizing rabbits with synthetic phosphopeptide and KLH conjugates. Antibodies were purified by affinity-chromatography using epitope-specific phosphopeptide. Non-phospho specific antibodies were removed by chromatography using

Target Details

Target:	DPYSL2
Alternative Name:	DPYSL2 (DPYSL2 Products)

Target Details

Background:

Background:

CRMP-2 is an enzyme with dihydropyrimidinase activity. Plays a role in RhoA-dependent signaling, through interaction with and regulation of Rho kinase. Plays a role in neurogenesis. Aberrantly expressed in fetal Down syndrome brain.

Goshima Y., Nature 376:509-514(1995).

Hamajima N., Gene 180:157-163(1996).

Kitamura K., DNA Res. 6:291-297(1999).

Aliases: Collapsin response mediator protein 2 antibody, Collapsin response mediator protein antibody, Collapsin response mediator protein hCRMP 2 antibody, CRAM antibody, CRMP 2 antibody, CRMP-2 antibody, CRMP2 antibody, DHPRP 2 antibody, DHPRP2 antibody, Dihydropyrimidinase 2 antibody, Dihydropyrimidinase like 2 antibody, Dihydropyrimidinase like 2 long form antibody, Dihydropyrimidinase related protein 2 antibody, Dihydropyrimidinase-related protein 2 antibody, DPYL 2 antibody, DPYL2 antibody, DPYL2_HUMAN antibody, DPYSL 2 antibody, Dpysl2 antibody, DRP-2 antibody, DRP2 antibody, Musunc 33 antibody, Musunc33 antibody, N2A3 antibody, TOAD 64 antibody, TOAD64 antibody, ULIP 2 protein antibody, ULIP-2 antibody, Ulip2 antibody, Unc-33-like phosphoprotein 2 antibody

UniProt:

[Q16555](#)

Pathways:

[Regulation of Cell Size](#)

Application Details

Application Notes:

WB:1:500-1:1000,

Restrictions:

For Research Use only

Handling

Format:

Liquid

Buffer:

Rabbit IgG in phosphate buffered saline (without Mg²⁺ and Ca²⁺), pH 7.4, 150 mM NaCl, 0.02 % sodium azide and 50 % glycerol.

Preservative:

Sodium azide

Precaution of Use:

This product contains Sodium azide: a POISONOUS AND HAZARDOUS SUBSTANCE which should be handled by trained staff only.

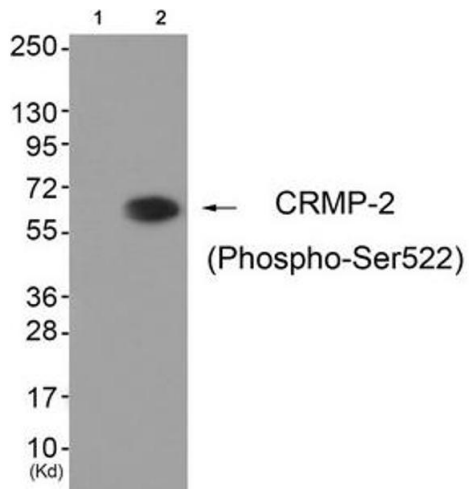
Storage:

-20 °C,-80 °C

Handling

Storage Comment: Upon receipt, store at -20°C or -80°C. Avoid repeated freeze.

Images



Western Blotting

Image 1. Western blot analysis of extracts from HuvEc cells (Lane 2), using CRMP-2 (Phospho-Ser522) Antibody. The lane on the left is treated with antigen-specific peptide.