

Datasheet for ABIN7138645
anti-ALOX5 antibody (pSer523)[Go to Product page](#)

2 Images

Overview

Quantity:	100 µL
Target:	ALOX5
Binding Specificity:	pSer523
Reactivity:	Human
Host:	Rabbit
Clonality:	Polyclonal
Conjugate:	This ALOX5 antibody is un-conjugated
Application:	Western Blotting (WB), ELISA

Product Details

Immunogen:	Peptide sequence around phosphorylation site of serine 523 (R-K-S(p)-K-G) derived from Human ALOX5.
Isotype:	IgG
Cross-Reactivity:	Human, Rat
Purification:	Antibodies were produced by immunizing rabbits with synthetic phosphopeptide and KLH conjugates. Antibodies were purified by affinity-chromatography using epitope-specific phosphopeptide. Non-phospho specific antibodies were removed by chromatography using

Target Details

Target:	ALOX5
Alternative Name:	ALOX5 (ALOX5 Products)

Target Details

Background:	Background: Catalyzes the first step in leukotriene biosynthesis, and thereby plays a role in inflammatory processes. Aliases: 5 Lipoxygenase antibody, 5 LO antibody, 5 LOX antibody, 5-lipoxygenase antibody, 5-LO antibody, 5-LOX antibody, 5LOX antibody, 5LPG antibody, ALOX 5 antibody, Alox5 antibody, Arachidonate 5 lipoxygenase antibody, Arachidonate 5-lipoxygenase antibody, arachidonic 5-lipoxygenase alpha-10 isoform antibody, arachidonic 5-lipoxygenase delta-10-13 isoform antibody, arachidonic 5-lipoxygenase delta-13 isoform antibody, arachidonic 5-lipoxygenase delta-p10 isoform antibody, Arachidonic acid 5 lipoxygenase antibody, Leukotriene A4 synthase antibody, LOG 5 antibody, LOG5 antibody, LOX5_HUMAN antibody, MGC163204 antibody
-------------	---

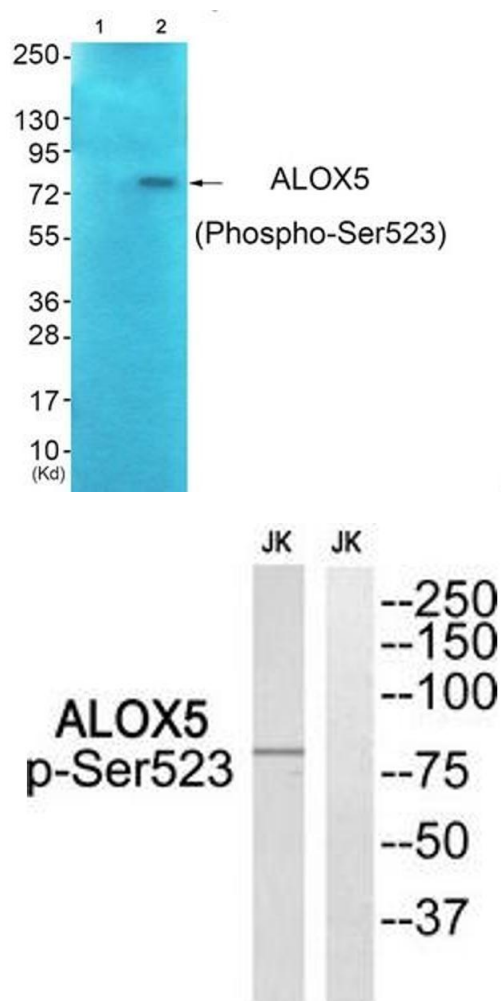
UniProt:	P09917
----------	------------------------

Application Details

Application Notes:	WB:1:500-1:3000,
Restrictions:	For Research Use only

Handling

Format:	Liquid
Buffer:	Rabbit IgG in phosphate buffered saline (without Mg ²⁺ and Ca ²⁺), pH 7.4, 150 mM NaCl, 0.02 % sodium azide and 50 % glycerol.
Preservative:	Sodium azide
Precaution of Use:	This product contains Sodium azide: a POISONOUS AND HAZARDOUS SUBSTANCE which should be handled by trained staff only.
Storage:	-20 °C,-80 °C
Storage Comment:	Upon receipt, store at -20°C or -80°C. Avoid repeated freeze.



Western Blotting

Image 1. Western blot analysis of extracts from JK cells (Lane 2), using ALOX5 (Phospho-Ser523) Antibody. The lane on the left is treated with synthesized peptide.

Western Blotting

Image 2. Western blot analysis of extracts from Jurkat cells, using ALOX5 (Phospho-Ser523) antibody. The lane on the right is treated with the synthesized peptide.