

Datasheet for ABIN7138650
anti-SYN1 antibody (pSer549)[Go to Product page](#)

2 Images

Overview

Quantity:	100 µL
Target:	SYN1
Binding Specificity:	pSer549
Reactivity:	Mouse
Host:	Rabbit
Clonality:	Polyclonal
Conjugate:	This SYN1 antibody is un-conjugated
Application:	Western Blotting (WB), ELISA

Product Details

Immunogen:	Peptide sequence around phosphorylation site of serine 549(P-A-S(p)-P-S)derived from Rat Synapsin
Isotype:	IgG
Cross-Reactivity:	Human, Mouse, Rat
Purification:	Antibodies were produced by immunizing rabbits with synthetic phosphopeptide and KLH conjugates. Antibodies were purified by affinity-chromatography using epitope-specific phosphopeptide. Non-phospho specific antibodies were removed by chromatography using

Target Details

Target:	SYN1
Alternative Name:	Syn1 (SYN1 Products)

Target Details

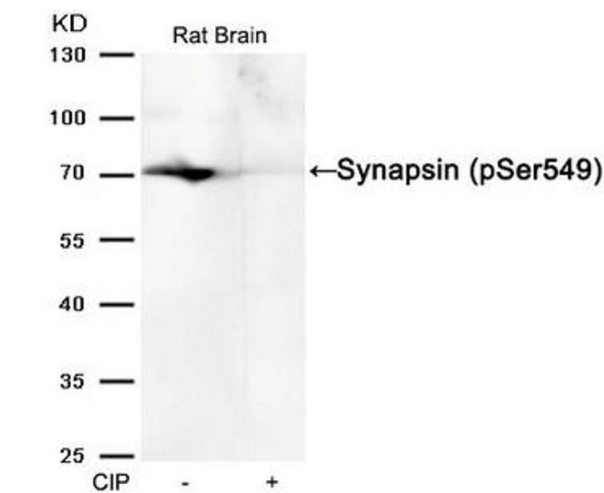
Background:	<p>Background:</p> <p>Neuronal phosphoprotein that coats synaptic vesicles, binds to the cytoskeleton, and is believed to function in the regulation of neurotransmitter release. The complex formed with NOS1 and CAPON proteins is necessary for specific nitric-oxid functions at a presynaptic level</p> <p>Greengard, P. (1987) Mol Neurobiol 1, 81-119.</p> <p>Hosaka, M. et al. (1999) Neuron 24, 377-87.</p> <p>Aliases: Syn1 antibody, Syn-1 antibody, Synapsin-1 antibody, Synapsin I antibody</p>
UniProt:	O88935

Application Details

Application Notes:	WB:1:500-1:1000,
Restrictions:	For Research Use only

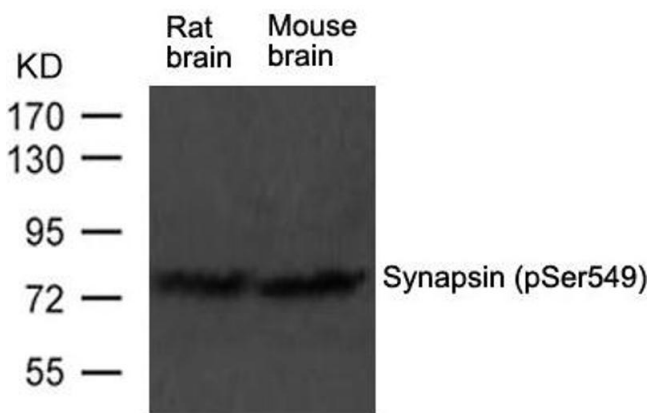
Handling

Format:	Liquid
Buffer:	Supplied at 1.0 mg/mL in phosphate buffered saline (without Mg ²⁺ and Ca ²⁺), pH 7.4, 150 mM NaCl, 0.02 % sodium azide and 50 % glycerol.
Preservative:	Sodium azide
Precaution of Use:	This product contains Sodium azide: a POISONOUS AND HAZARDOUS SUBSTANCE which should be handled by trained staff only.
Storage:	-20 °C,-80 °C
Storage Comment:	Upon receipt, store at -20°C or -80°C. Avoid repeated freeze.



Western Blotting

Image 1. Western blot analysis of extracts from Rat brain tissue or calf intestinal phosphatase (CIP), using Synapsin (phospho-Ser549) Antibody.



Western Blotting

Image 2. Western blot analysis of extract from rat brain and mouse brain tissue using Synapsin (phospho-Ser549) Antibody using