

Datasheet for ABIN7138654
anti-14-3-3 zeta antibody (pSer58)

3 Images

[Go to Product page](#)

Overview

Quantity:	100 µL
Target:	14-3-3 zeta (YWHAZ)
Binding Specificity:	pSer58
Reactivity:	Human
Host:	Rabbit
Clonality:	Polyclonal
Conjugate:	This 14-3-3 zeta antibody is un-conjugated
Application:	Western Blotting (WB), Immunohistochemistry (IHC), ELISA, Immunofluorescence (IF)

Product Details

Immunogen:	Peptide sequence around phosphorylation site of serine 58 (R-S-S(p)-W-R) derived from Human 14-3-3 zeta.
Isotype:	IgG
Cross-Reactivity:	Human, Mouse, Rat
Purification:	Antibodies were produced by immunizing rabbits with synthetic phosphopeptide and KLH conjugates. Antibodies were purified by affinity-chromatography using epitope-specific phosphopeptide. Non-phospho specific antibodies were removed by chromatography using

Target Details

Target:	14-3-3 zeta (YWHAZ)
Alternative Name:	YWHAZ (YWHAZ Products)

Target Details

Background:	<p>Background: This gene product belongs to the 14-3-3 family of proteins which mediate signal transduction by binding to phosphoserine-containing proteins. This highly conserved protein family is found in both plants and mammals, and this protein is 99 % identical to the mouse, rat and sheep orthologs. The encoded protein interacts with IRS1 protein, suggesting a role in regulating insulin sensitivity. Several transcript variants that differ in the 5' UTR but that encode the same protein have been identified for this gene.</p> <p>Gu YM, et al. (2006) FEBS Lett , 580(1): 305-310</p> <p>Powell DW, et al. (2003) Mol Cell Biol, 23(15): 5376-5387</p> <p>Mackintosh C. (2004) Biochem J, 381(Pt 2): 329-342.</p> <p>Aliases: 14 3 3 delta antibody, 14 3 3 protein zeta/delta antibody, 14 3 3 protein/cytosolic phospholipase A2 antibody, 14 3 3 zeta antibody, 14-3-3 protein zeta/delta antibody, 1433Z_HUMAN antibody, Epididymis luminal protein 4 antibody, Epididymis secretory protein Li 3 antibody, HEL S 3 antibody, HEL4 antibody, KCIP-1 antibody, KCIP1 antibody, MGC111427 antibody, MGC126532 antibody, MGC138156 antibody, Phospholipase A2 antibody, Protein kinase C inhibitor protein 1 antibody, Tyrosine 3 monooxygenase/tryptophan 5 monooxygenase activation protein, delta polypeptide antibody, Tyrosine 3 monooxygenase/tryptophan 5 monooxygenase activation protein, zeta antibody, Tyrosine 3 monooxygenase/tryptophan 5 monooxygenase activation protein, zeta polypeptide antibody, Tyrosine 3/tryptophan 5 monooxygenase activation protein, zeta polypeptide antibody, YWHAD antibody, YWHAZ antibody</p>
-------------	---

UniProt:	P63104
Pathways:	Apoptosis , Hormone Transport , Myometrial Relaxation and Contraction , Regulation of Leukocyte Mediated Immunity , Positive Regulation of Immune Effector Process , Synaptic Membrane , Production of Molecular Mediator of Immune Response , Maintenance of Protein Location

Application Details

Application Notes:	WB:1:500-1:1000, IHC:1:50-1:100, IF:1:100-1:200,
Restrictions:	For Research Use only

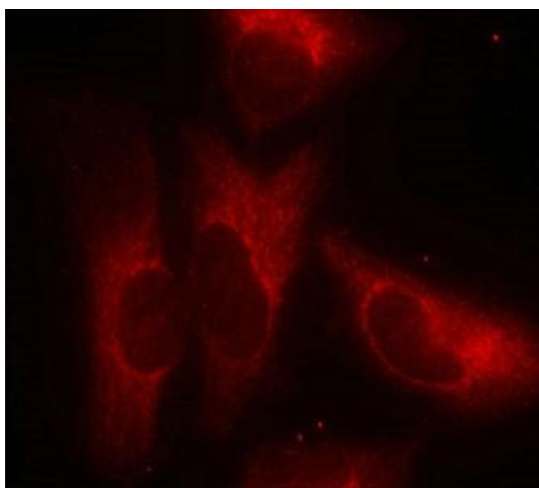
Handling

Format:	Liquid
---------	--------

Handling

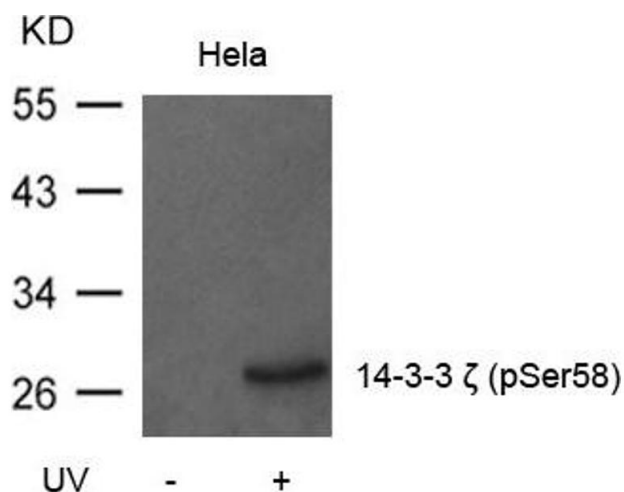
Buffer:	Supplied at 1.0 mg/mL in phosphate buffered saline (without Mg ²⁺ and Ca ²⁺), pH 7.4, 150 mM NaCl, 0.02 % sodium azide and 50 % glycerol.
Preservative:	Sodium azide
Precaution of Use:	This product contains Sodium azide: a POISONOUS AND HAZARDOUS SUBSTANCE which should be handled by trained staff only.
Storage:	-20 °C, -80 °C
Storage Comment:	Upon receipt, store at -20°C or -80°C. Avoid repeated freeze.

Images



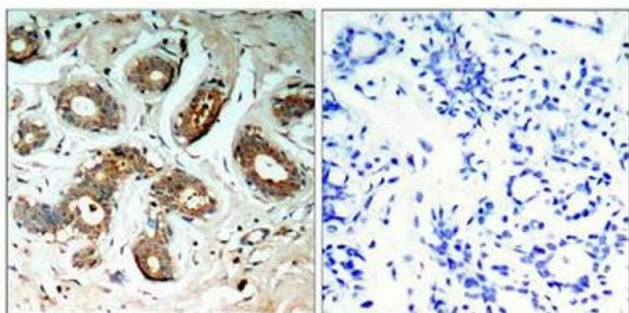
Immunofluorescence

Image 1. Immunofluorescence staining of methanol-fixed HeLa cells using 14-3-3ζ(Phospho-Ser58) Antibody.



Western Blotting

Image 2. Western blot analysis of extracts from HeLa cells untreated or treated with UV using 14-3-3ζ(Phospho-Ser58) Antibody.



Immunohistochemistry

Image 3. Immunohistochemical analysis of paraffin-embedded human breast carcinoma tissue using 14-3-3z(Phospho-Ser58) Antibody(left) or the same antibody preincubated with blocking peptide(right).