



[Go to Product page](#)

Datasheet for ABIN7138656  
**anti-Niban antibody (pSer602)**

1 Image

Overview

Quantity:	100 µL
Target:	Niban (FAM129A)
Binding Specificity:	pSer602
Reactivity:	Human
Host:	Rabbit
Clonality:	Polyclonal
Conjugate:	This Niban antibody is un-conjugated
Application:	Western Blotting (WB), ELISA

Product Details

Immunogen:	Peptide sequence around phosphorylation site of serine 602 (R-A-S(p)-A-I) derived from Human Niban.
Isotype:	IgG
Cross-Reactivity:	Human
Purification:	Antibodies were produced by immunizing rabbits with synthetic phosphopeptide and KLH conjugates. Antibodies were purified by affinity-chromatography using epitope-specific phosphopeptide. Non-phospho specific antibodies were removed by chromatography using

Target Details

Target:	Niban (FAM129A)
Alternative Name:	FAM129A ( <a href="#">FAM129A Products</a> )

## Target Details

---

Background:	<p>Background:</p> <p>Regulates phosphorylation of a number of proteins involved in translation regulation including EIF2A, EIF4EBP1 and RPS6KB1. May be involved in the endoplasmic reticulum stress response</p> <p>Vill</p> <p>Aliases: NIBAN1 antibody, C1orf24 antibody, FAM129A antibody, NIBAN antibody, GIG39 antibody, Protein Niban 1 antibody, Cell growth-inhibiting gene 39 protein antibody, Protein FAM129A antibody</p>
UniProt:	<a href="#">Q9BZQ8</a>

## Application Details

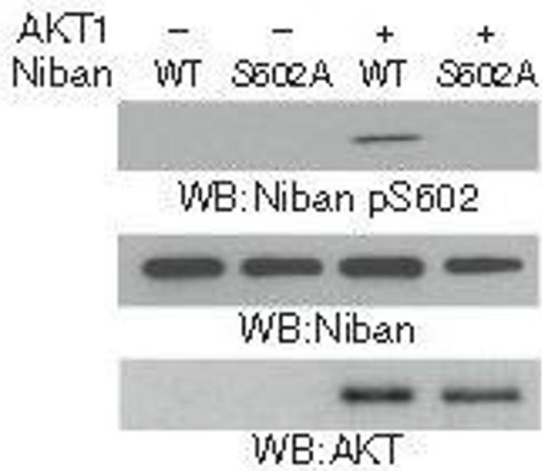
---

Application Notes:	WB:1:500-1:1000,
Restrictions:	For Research Use only

## Handling

---

Format:	Liquid
Buffer:	Supplied at 1.0 mg/mL in phosphate buffered saline (without Mg <sup>2+</sup> and Ca <sup>2+</sup> ), pH 7.4, 150 mM NaCl, 0.02 % sodium azide and 50 % glycerol.
Preservative:	Sodium azide
Precaution of Use:	This product contains Sodium azide: a POISONOUS AND HAZARDOUS SUBSTANCE which should be handled by trained staff only.
Storage:	-20 °C,-80 °C
Storage Comment:	Upon receipt, store at -20°C or -80°C. Avoid repeated freeze.



### Western Blotting

**Image 1.** Western blot analysis in vitro kinase assays were performed by mixing purified bacterially expressed WT His-Niban or the His-Niban S602A with or without purified active AKT1 using Niban (Phospho-Ser602) Antibody.