

Datasheet for ABIN7138663
anti-GAB2 antibody (pSer623)[Go to Product page](#)

2 Images

Overview

| | |
|----------------------|--|
| Quantity: | 100 µL |
| Target: | GAB2 |
| Binding Specificity: | pSer623 |
| Reactivity: | Human |
| Host: | Rabbit |
| Clonality: | Polyclonal |
| Conjugate: | This GAB2 antibody is un-conjugated |
| Application: | Western Blotting (WB), ELISA, Immunohistochemistry (IHC) |

Product Details

| | |
|-------------------|--|
| Immunogen: | Peptide sequence around phosphorylation site of Serine 623(P-S-S(p)-P-S) derived from Human Gab2 . |
| Isotype: | IgG |
| Cross-Reactivity: | Human, Mouse |
| Purification: | Antibodies were produced by immunizing rabbits with synthetic phosphopeptide and KLH conjugates. Antibodies were purified by affinity-chromatography using epitope-specific phosphopeptide. Non-phospho specific antibodies were removed by chromatography using |

Target Details

| | |
|-------------------|--|
| Target: | GAB2 |
| Alternative Name: | GAB2 (GAB2 Products) |

Target Details

Background:

Background:

This gene is a member of the GRB2-associated binding protein (GAB) gene family and is similar to the GAB1 gene. These proteins contain pleckstrin homology (PH) domain, and bind SHP2 tyrosine phosphatase and GRB2 adapter protein. They act as adapters for transmitting various signals in response to stimuli through cytokine and growth factor receptors, and T- and B-cell antigen receptors. The protein encoded by this gene is the principal activator of phosphatidylinositol-3 kinase in response to activation of the high affinity IgE receptor. Two alternatively spliced transcripts encoding different isoforms have been described for this gene.

Nishida K., Blood 93:1809-1816(1999).

Nagase T., DNA Res. 5:31-39(1998).

Taylor T.D., Nature 440:497-500(2006).

Aliases: GAB 2 antibody, Gab2 antibody, GAB2_HUMAN antibody, Grb 2 associated binder 2 antibody, GRB 2 associated binding protein 2 antibody, Grb2 associated binder 2 antibody, GRB2 associated binder 2 pp100 antibody, GRB2 associated binding protein 2 antibody, GRB2-associated binder 2 antibody, GRB2-associated-binding protein 2 antibody, Growth factor receptor bound protein 2 associated protein 2 antibody, Growth factor receptor bound protein 2-associated protein 2 antibody, KIAA0571 antibody, p97 antibody, PH domain containing adaptor molecule p97 antibody, pp100 antibody

UniProt:

[Q9UQC2](#)

Pathways:

[TCR Signaling](#), [Fc-epsilon Receptor Signaling Pathway](#), [Regulation of Leukocyte Mediated Immunity](#), [Positive Regulation of Immune Effector Process](#), [BCR Signaling](#), [Warburg Effect](#)

Application Details

Application Notes:

WB:1:500-1:1000, IHC:1:50-1:100,

Restrictions:

For Research Use only

Handling

Format:

Liquid

Buffer:

Rabbit IgG in phosphate buffered saline (without Mg²⁺ and Ca²⁺), pH 7.4, 150 mM NaCl, 0.02 % sodium azide and 50 % glycerol.

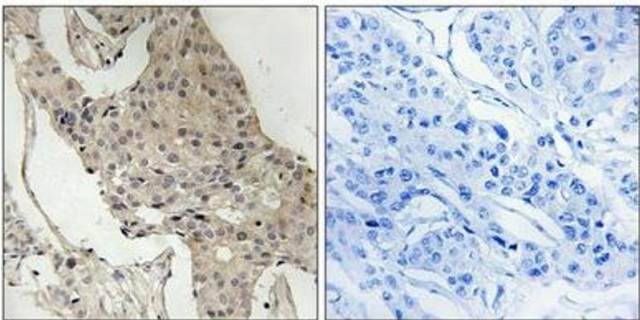
Preservative:

Sodium azide

Handling

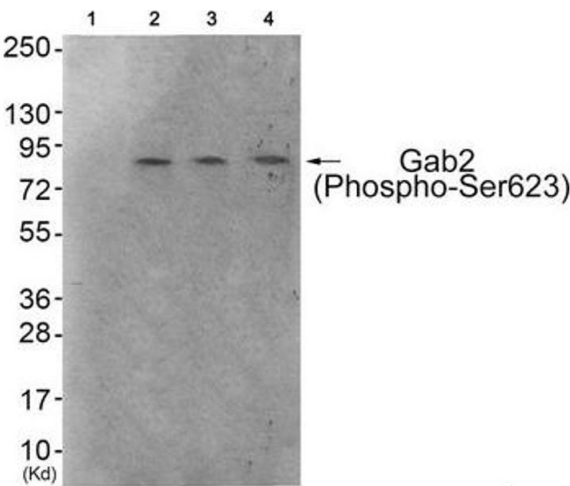
| | |
|--------------------|--|
| Precaution of Use: | This product contains Sodium azide: a POISONOUS AND HAZARDOUS SUBSTANCE which should be handled by trained staff only. |
| Storage: | -20 °C,-80 °C |
| Storage Comment: | Upon receipt, store at -20°C or -80°C. Avoid repeated freeze. |

Images



Immunohistochemistry

Image 1. Immunohistochemical analysis of paraffin-embedded human breast carcinoma tissue using Gab2 (Phospho-Ser623) antibody (left) or the same antibody preincubated with blocking peptide (right).



Western Blotting

Image 2. Western blot analysis of extracts from 293 cells (Lane 2), HeLa cells (Lane 3) and HepG2 cells (Lane 4), using Gab2 (Phospho-Ser623) Antibody. The lane on the left is treated with antigen-specific peptide.