

Datasheet for ABIN7138669

**anti-eIF4EBP1 antibody (pSer64)**[Go to Product page](#)**2** Images

## Overview

Quantity:	100 µL
Target:	eIF4EBP1 (EIF4EBP1)
Binding Specificity:	pSer64
Reactivity:	Human
Host:	Rabbit
Clonality:	Polyclonal
Conjugate:	This eIF4EBP1 antibody is un-conjugated
Application:	Western Blotting (WB), Immunohistochemistry (IHC), ELISA

## Product Details

Immunogen:	Peptide sequence around phosphorylation site of serine 64 (R-N-S(p)-P-V) derived from Human 4E-BP1.
Isotype:	IgG
Cross-Reactivity:	Human, Mouse, Rat
Purification:	Antibodies were produced by immunizing rabbits with synthetic phosphopeptide and KLH conjugates. Antibodies were purified by affinity-chromatography using epitope-specific phosphopeptide. Non-phospho specific antibodies were removed by chromatography using

## Target Details

Target:	eIF4EBP1 (EIF4EBP1)
Alternative Name:	EIF4EBP1 ( <a href="#">EIF4EBP1 Products</a> )

## Target Details

**Background:** Background: Regulates eIF4E activity by preventing its assembly into the eIF4F complex: hypophosphorylated form competes with EIF4G1/EIF4G3 and strongly binds to EIF4E, leading to repress translation. Mediates the regulation of protein translation by hormones, growth factors and other stimuli that signal through the MAP kinase and mTORC1 pathways.

**Aliases:** 4E-BP1 antibody, 4EBP1 antibody, 4EBP1\_HUMAN antibody, BP 1 antibody, eIF4E binding protein 1 antibody, eIF4E-binding protein 1 antibody, Eif4ebp1 antibody, Eukaryotic translation initiation factor 4E-binding protein 1 antibody, PHAS-I antibody, PHASI antibody, Phosphorylated heat- and acid-stable protein regulated by insulin 1 antibody

**UniProt:** [Q13541](#)

**Pathways:** [MAPK Signaling](#), [PI3K-Akt Signaling](#), [RTK Signaling](#), [AMPK Signaling](#), [Regulation of Cell Size](#), [BCR Signaling](#)

## Application Details

**Application Notes:** WB:1:500-1:3000, IHC:1:50-1:100,

**Restrictions:** For Research Use only

## Handling

**Format:** Liquid

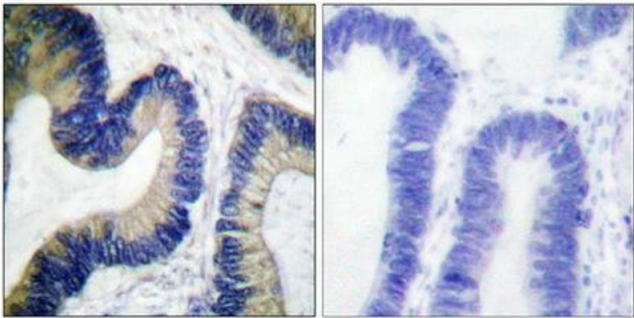
**Buffer:** Rabbit IgG in phosphate buffered saline (without Mg<sup>2+</sup> and Ca<sup>2+</sup>), pH 7.4, 150 mM NaCl, 0.02 % sodium azide and 50 % glycerol.

**Preservative:** Sodium azide

**Precaution of Use:** This product contains Sodium azide: a POISONOUS AND HAZARDOUS SUBSTANCE which should be handled by trained staff only.

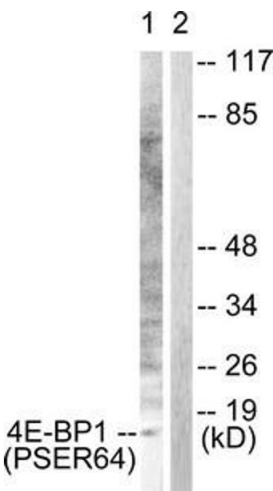
**Storage:** -20 °C,-80 °C

**Storage Comment:** Upon receipt, store at -20°C or -80°C. Avoid repeated freeze.



Immunohistochemistry

**Image 1.** Immunohistochemical analysis of paraffin-embedded human colon carcinoma tissue using 4E-BP1 (Phospho-Ser64) antibody. The picture on the right is treated with the synthesized peptide.



Western Blotting

**Image 2.** Western blot analysis of extracts from Jurkat cells, treated with Insulin (0.01U/mL, 15 mins), using 4E-BP1 (Phospho-Ser64) antibody. The lane on the right is treated with the synthesized peptide.