

Datasheet for ABIN7138671
anti-WEE1 antibody (pSer642)[Go to Product page](#)

1 Image

Overview

Quantity:	100 µL
Target:	WEE1
Binding Specificity:	pSer642
Reactivity:	Human
Host:	Rabbit
Clonality:	Polyclonal
Conjugate:	This WEE1 antibody is un-conjugated
Application:	ELISA, Western Blotting (WB)

Product Details

Immunogen:	Peptide sequence around phosphorylation site of Serine 642(S-V-S(p)-L-T) derived from Human WEE1.
Isotype:	IgG
Cross-Reactivity:	Human, Mouse, Rat
Purification:	Antibodies were produced by immunizing rabbits with synthetic phosphopeptide and KLH conjugates. Antibodies were purified by affinity-chromatography using epitope-specific phosphopeptide. Non-phospho specific antibodies were removed by chromatography using

Target Details

Target:	WEE1
Alternative Name:	WEE1 (WEE1 Products)

Target Details

Background:

Background:

Acts as a negative regulator of entry into mitosis (G2 to M transition) by protecting the nucleus from cytoplasmically activated cyclin B1-complexed CDK1 before the onset of mitosis by mediating phosphorylation of CDK1 on 'Tyr-15'. Specifically phosphorylates and inactivates cyclin B1-complexed CDK1 reaching a maximum during G2 phase and a minimum as cells enter M phase. Phosphorylation of cyclin B1-CDK1 occurs exclusively on 'Tyr-15' and phosphorylation of monomeric CDK1 does not occur. Its activity increases during S and G2 phases and decreases at M phase when it is hyperphosphorylated. A correlated decrease in protein level occurs at M/G1 phase, probably due to its degradation.

Watanabe N., EMBO J. 14:1878-1891(1995).

Cichutek A., Cytogenet. Cell Genet. 93:277-283(2001).

Igarashi M., Nature 353:80-83(1991)

Aliases: DKFZp686I18166 antibody, EC 2.7.10.2 antibody, FLJ16446 antibody, MGC105683 antibody, OTTHUMP00000231338 antibody, OTTHUMP00000231339 antibody, Wee 1 antibody, WEE 1 homolog 1 (S. pombe) antibody, WEE1 antibody, WEE1 homolog (S. pombe) antibody, Wee1 homolog antibody, WEE1 homolog S. pombe antibody, Wee1 like protein kinase antibody, Wee1 tyrosine kinase antibody, Wee1+ homolog antibody, Wee1+ S. pombe homolog antibody, WEE1, S. pombe, homolog of antibody, WEE1, somatic antibody, Wee1-like protein kinase antibody, WEE1_HUMAN antibody, WEE1A antibody, Wee1A kinase antibody, WEE1hu antibody

UniProt:

[P30291](#)

Pathways:

[Cell Division Cycle](#), [Mitotic G1-G1/S Phases](#), [M Phase](#)

Application Details

Application Notes:

WB:1:500-1:1000,

Restrictions:

For Research Use only

Handling

Format:

Liquid

Buffer:

Rabbit IgG in phosphate buffered saline (without Mg²⁺ and Ca²⁺), pH 7.4, 150 mM NaCl, 0.02 % sodium azide and 50 % glycerol.

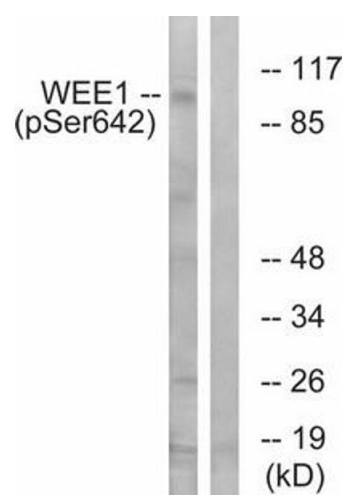
Preservative:

Sodium azide

Handling

Precaution of Use:	This product contains Sodium azide: a POISONOUS AND HAZARDOUS SUBSTANCE which should be handled by trained staff only.
Storage:	-20 °C,-80 °C
Storage Comment:	Upon receipt, store at -20°C or -80°C. Avoid repeated freeze.

Images



Western Blotting

Image 1. Western blot analysis of extracts from 293 cells treated with etoposide using WEE1 (Phospho-Ser642) Antibody. The lane on the right is treated with the antigen-specific peptide.