

Datasheet for ABIN7138673

anti-Glycogen Synthase 1 antibody (pSer645)[Go to Product page](#)**1** Image

Overview

Quantity:	100 µL
Target:	Glycogen Synthase 1 (GYS1)
Binding Specificity:	pSer645
Reactivity:	Human
Host:	Rabbit
Clonality:	Polyclonal
Conjugate:	This Glycogen Synthase 1 antibody is un-conjugated
Application:	Western Blotting (WB), ELISA

Product Details

Immunogen:	Peptide sequence around phosphorylation site of serine 645 (P-P-S(p)-P-S) derived from Glycogen Synthase.
Isotype:	IgG
Cross-Reactivity:	Human, Mouse, Rat
Purification:	Antibodies were produced by immunizing rabbits with synthetic phosphopeptide and KLH conjugates. Antibodies were purified by affinity-chromatography using epitope-specific phosphopeptide. Non-phospho specific antibodies were removed by chromatography using

Target Details

Target:	Glycogen Synthase 1 (GYS1)
Alternative Name:	GYS1 (GYS1 Products)

Target Details

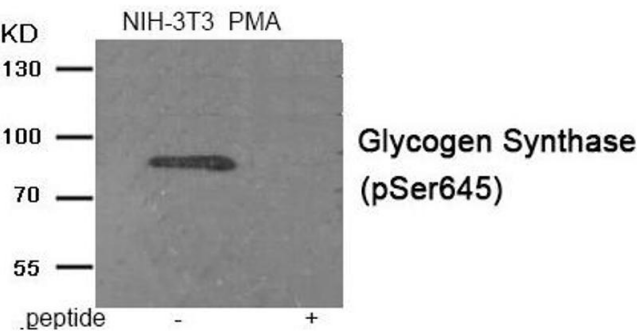
Background:	Background: Transfers the glycosyl residue from UDP-Glc to the non-reducing end of alpha-1,4-glucan. Jensen J, et al. (2012)Am J Physiol Endocrinol Metab 303, E82-9. Lin FC, et al. (2012) Am J Physiol Cell Physiol 302, C1539-47. Kelsall IR, et al. (2011)J Neurochem 118, 596-610. Aliases: Glycogen [starch] synthase antibody, Glycogen synthase 1 (muscle) antibody, Glycogen synthase 1 antibody, GSY antibody, GYS antibody, Gys1 antibody, GYS1_HUMAN antibody, muscle antibody
UniProt:	P13807
Pathways:	PI3K-Akt Signaling , AMPK Signaling , Cellular Glucan Metabolic Process

Application Details

Application Notes:	WB:1:500-1:1000,
Restrictions:	For Research Use only

Handling

Format:	Liquid
Buffer:	Rabbit IgG in phosphate buffered saline (without Mg ²⁺ and Ca ²⁺), pH 7.4, 150 mM NaCl, 0.02 % sodium azide and 50 % glycerol.
Preservative:	Sodium azide
Precaution of Use:	This product contains Sodium azide: a POISONOUS AND HAZARDOUS SUBSTANCE which should be handled by trained staff only.
Storage:	-20 °C,-80 °C
Storage Comment:	Upon receipt, store at -20°C or -80°C. Avoid repeated freeze.



Western Blotting

Image 1. Western blot analysis of extracts from NIH-3T3 cells treated with PMA using Phospho-Glycogen Synthase (Ser645) antibody. The lane on the right is treated with the antigen-specific peptide.