

Datasheet for ABIN7138674
anti-PKC delta antibody (pSer645)[Go to Product page](#)

2 Images

Overview

Quantity:	100 µL
Target:	PKC delta (PKCd)
Binding Specificity:	pSer645
Reactivity:	Human
Host:	Rabbit
Clonality:	Polyclonal
Conjugate:	This PKC delta antibody is un-conjugated
Application:	Western Blotting (WB), ELISA, Immunohistochemistry (IHC)

Product Details

Immunogen:	Peptide sequence around phosphorylation site of serine 645 (R-L-S(p)-Y-S) derived from Human PKCd.
Isotype:	IgG
Cross-Reactivity:	Human, Mouse, Rat
Purification:	Antibodies were produced by immunizing rabbits with synthetic phosphopeptide and KLH conjugates. Antibodies were purified by affinity-chromatography using epitope-specific phosphopeptide. Non-phospho specific antibodies were removed by chromatography using

Target Details

Target:	PKC delta (PKCd)
Alternative Name:	PRKCD (PKCd Products)

Target Details

Background:	<p>Background: This is calcium-independent, phospholipid-dependent, serine- and threonine-specific enzyme. PKC is activated by diacylglycerol which in turn phosphorylates a range of cellular proteins. PKC also serves as the receptor for phorbol esters, a class of tumor promoters. May play a role in antigen-dependent control of B-cell function. Phosphorylates MUC1 in the C-terminal and regulates the interaction between MUC1 and beta-catenin.</p> <p>Kei Sakamoto, et.al. (2003) Am J Physiol Endocrinol Metab , 285: E1081 - E1088.</p> <p>Ling Zhang, et.al. (2004) J. Biol. Chem , 279: 28315 - 28319.</p> <p>Kristof Van Kolen et.al. (2006) FEBS J , 273: 1843 - 1854.</p> <p>Martin Villalba, et.al. (2002) J. Cell Biol , 157: 253.</p> <p>Aliases: CVID9 antibody, D14Ert420e antibody, Kinase PKC delta antibody, KPCD antibody, KPCD_HUMAN antibody, MAY 1 antibody, MAY1 antibody, MGC49908 antibody, nPKC delta antibody, nPKC-delta antibody, PCKd antibody, PKC d antibody, PKC delta antibody, PKCD antibody, PKCdelta antibody, PRKC D antibody, PRKC delta antibody, Prkcd antibody, Protein Kinase C delta antibody, Protein kinase C delta type antibody, Protein kinase C delta VIII antibody, Protein Kinase Cdelta antibody, Tyrosine protein kinase PRKCD antibody</p>
UniProt:	Q05655
Pathways:	Interferon-gamma Pathway , EGFR Signaling Pathway , Neurotrophin Signaling Pathway , Thyroid Hormone Synthesis , Regulation of Actin Filament Polymerization , Carbohydrate Homeostasis , Myometrial Relaxation and Contraction , M Phase , G-protein mediated Events , Dicarboxylic Acid Transport , Positive Regulation of Response to DNA Damage Stimulus , Interaction of EGFR with phospholipase C-gamma , Thromboxane A2 Receptor Signaling , Lipid Metabolism

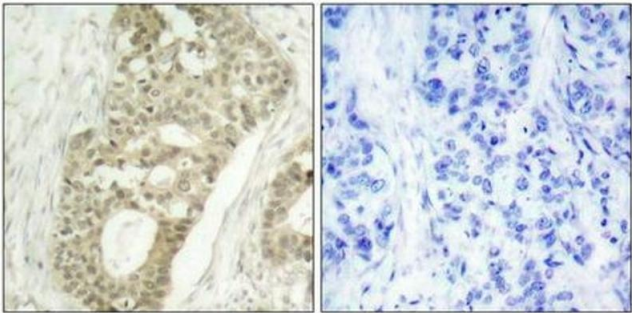
Application Details

Application Notes:	WB:1:500-1:1000, IHC:1:50-1:100,
Restrictions:	For Research Use only
Handling	
Format:	Liquid
Buffer:	Supplied at 1.0 mg/mL in phosphate buffered saline (without Mg2+ and Ca2+), pH 7.4, 150 mM NaCl, 0.02 % sodium azide and 50 % glycerol.
Preservative:	Sodium azide
Precaution of Use:	This product contains Sodium azide: a POISONOUS AND HAZARDOUS SUBSTANCE which

Handling

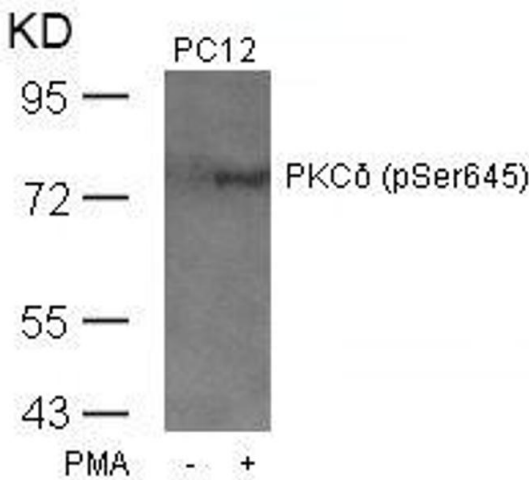
	should be handled by trained staff only.
Storage:	-20 °C,-80 °C
Storage Comment:	Upon receipt, store at -20°C or -80°C. Avoid repeated freeze.

Images



Immunohistochemistry

Image 1. Immunohistochemical analysis of paraffin-embedded human breast carcinoma tissue using PKCδ(Phospho-Ser645) Antibody(left) or the same antibody preincubated with blocking peptide(right).



Western Blotting

Image 2. Western blot analysis of extracts from PC12 cells untreated or treated with PMA using PKCδ(Phospho-Ser645) Antibody.