

Datasheet for ABIN7138675  
**anti-PKC beta antibody (pSer661)**



[Go to Product page](#)

1 Image

## Overview

Quantity:	100 µL
Target:	PKC beta (PRKCB)
Binding Specificity:	pSer661
Reactivity:	Human
Host:	Rabbit
Clonality:	Polyclonal
Conjugate:	This PKC beta antibody is un-conjugated
Application:	Western Blotting (WB), ELISA

## Product Details

Immunogen:	Peptide sequence around phosphorylation site of serine 661 (G-F-S(p)-Y-T) derived from Human PKCB.
Isotype:	IgG
Cross-Reactivity:	Human, Mouse, Rat
Purification:	Antibodies were produced by immunizing rabbits with synthetic phosphopeptide and KLH conjugates. Antibodies were purified by affinity-chromatography using epitope-specific phosphopeptide. Non-phospho specific antibodies were removed by chromatography using

## Target Details

Target:	PKC beta (PRKCB)
Alternative Name:	PRKCB ( <a href="#">PRKCB Products</a> )

## Target Details

---

Background:

Background:

Calcium-activated, phospholipid- and diacylglycerol (DAG)-dependent serine/threonine-protein kinase involved in various cellular processes such as regulation of the B-cell receptor (BCR) signalosome, oxidative stress-induced apoptosis, androgen receptor-dependent transcription regulation, insulin signaling and endothelial cells proliferation. Plays a key role in B-cell activation by regulating BCR-induced NF-kappa-B activation. Phosphorylation induces CARD11/CARMA1 association with lipid rafts and recruitment of the BCL10-MALT1 complex as well as MAP3K7/TAK1, which then activates IKK complex, resulting in nuclear translocation and activation of NFkB1.

Zhu M, Chen J, Jiang H, Miao C (2013) Cardiovasc Diabetol 12, 13

Leonard TA, et al. (2011) Cell 144, 55-66

Qiao M, et al. (2010) Mol Cell 38, 512-23

Aliases: KPCB\_HUMAN antibody, PKC Beta antibody, PKC-B antibody, PKC-beta antibody, PKCB antibody, Prkcb antibody, PRKCB II antibody, PRKCB2 antibody, Protein kinase C beta antibody, Protein kinase C beta type antibody

---

UniProt:

[P05771](#)

---

Pathways:

[WNT Signaling](#), [TCR Signaling](#), [Thyroid Hormone Synthesis](#), [Nuclear Hormone Receptor Binding](#), [Chromatin Binding](#), [Myometrial Relaxation and Contraction](#), [VEGF Signaling](#), [Unfolded Protein Response](#), [BCR Signaling](#)

## Application Details

---

Application Notes:

WB:1:500-1:1000,

---

Restrictions:

For Research Use only

## Handling

---

Format:

Liquid

---

Buffer:

Rabbit IgG in phosphate buffered saline (without Mg<sup>2+</sup> and Ca<sup>2+</sup>), pH 7.4, 150 mM NaCl, 0.02 % sodium azide and 50 % glycerol.

---

Preservative:

Sodium azide

---

Precaution of Use:

This product contains Sodium azide: a POISONOUS AND HAZARDOUS SUBSTANCE which should be handled by trained staff only.

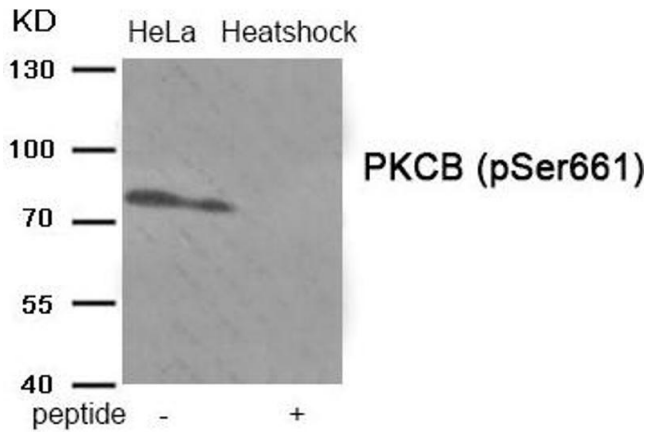
---

## Handling

Storage: -20 °C,-80 °C

Storage Comment: Upon receipt, store at -20°C or -80°C. Avoid repeated freeze.

## Images



### Western Blotting

**Image 1.** Western blot analysis of extracts from HeLa cells treated with Heatshock using Phospho-PKCB (Ser661) antibody. The lane on the right is treated with the antigen-specific peptide.