

Datasheet for ABIN7138676
anti-PER2 antibody (pSer662)



[Go to Product page](#)

3 Images

Overview

Quantity:	100 µL
Target:	PER2
Binding Specificity:	pSer662
Reactivity:	Human
Host:	Rabbit
Clonality:	Polyclonal
Conjugate:	This PER2 antibody is un-conjugated
Application:	Western Blotting (WB), ELISA, Immunohistochemistry (IHC)

Product Details

Immunogen:	Peptide sequence around phosphorylation site of serine 662 (A-E-S(p)-V-A) derived from Human Period Circadian Protein 2.
Isotype:	IgG
Cross-Reactivity:	Human, Mouse
Purification:	Antibodies were produced by immunizing rabbits with synthetic phosphopeptide and KLH conjugates. Antibodies were purified by affinity-chromatography using epitope-specific phosphopeptide. Non-phospho specific antibodies were removed by chromatography using

Target Details

Target:	PER2
Alternative Name:	PER2 (PER2 Products)

Target Details

Background:	<p>Background: Transcriptional repressor which forms a core component of the circadian clock.</p> <p>The circadian clock, an internal time-keeping system, regulates various physiological processes through the generation of approximately 24 hour circadian rhythms in gene expression, which are translated into rhythms in metabolism and behavior. It is derived from the Latin roots 'circa' (about) and 'diem' (day) and acts as an important regulator of a wide array of physiological functions including metabolism, sleep, body temperature, blood pressure, endocrine, immune, cardiovascular, and renal function. Consists of two major components: the central clock, residing in the suprachiasmatic nucleus (SCN) of the brain, and the peripheral clocks that are present in nearly every tissue and organ system. Both the central and peripheral clocks can be reset by environmental cues, also known as Zeitgebers (German for 'timegivers').</p> <p>Aliases: Circadian clock protein PERIOD 2 antibody, FASPS antibody, FASPS1 antibody, hPER 2 antibody, hPER2 antibody, KIAA0347 antibody, OTTHUMP00000164476 antibody, PER 2 antibody, PER2 antibody, PER2_HUMAN antibody, Period 2 antibody, Period 2 isoform 1 antibody, Period circadian clock 2 antibody, Period circadian protein 2 antibody, Period circadian protein homolog 2 antibody, Period homolog 2 (Drosophila) antibody, Period homolog 2 antibody, Period, Drosophila, homolog of, 2 antibody, Period2 antibody</p>
-------------	--

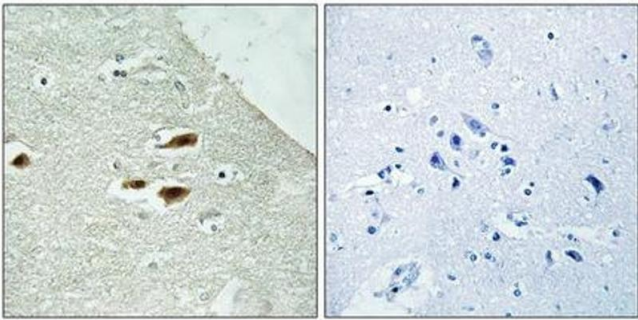
UniProt: [015055](#)

Application Details

Application Notes:	WB:1:500-1:1000, IHC:1:50-1:100,
Restrictions:	For Research Use only

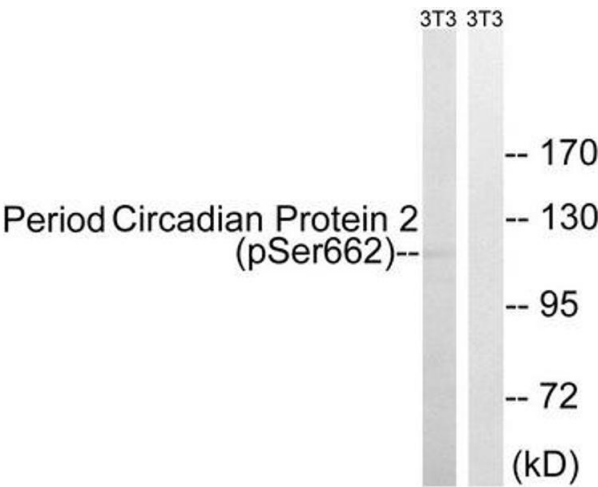
Handling

Format:	Liquid
Buffer:	Rabbit IgG in phosphate buffered saline (without Mg ²⁺ and Ca ²⁺), pH 7.4, 150 mM NaCl, 0.02 % sodium azide and 50 % glycerol.
Preservative:	Sodium azide
Precaution of Use:	This product contains Sodium azide: a POISONOUS AND HAZARDOUS SUBSTANCE which should be handled by trained staff only.
Storage:	-20 °C,-80 °C
Storage Comment:	Upon receipt, store at -20°C or -80°C. Avoid repeated freeze.



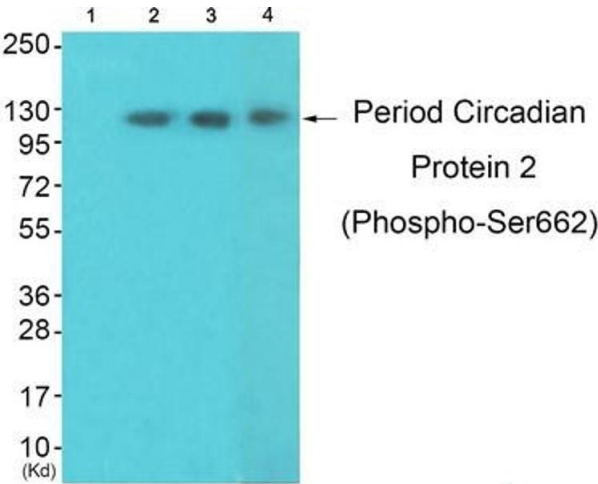
Immunohistochemistry

Image 1. Immunohistochemistry analysis of paraffin-embedded human brain tissue using Period Circadian Protein 2 (Phospho-Ser662) antibody. The picture on the right is treated with the synthesized peptide.



Western Blotting

Image 2. Western blot analysis of extracts from 3T3 cells, treated with PMA (125 ng/mL, 30 mins), using Period Circadian Protein 2 (Phospho-Ser662) antibody. The lane on the right is treated with the synthesized peptide.



Western Blotting

Image 3. Western blot analysis of extracts from 3T3lnotHeLa and K562 cells, using Period Circadian Protein 2 (Phospho-Ser662) Antibody. The lane on the left is treated with synthesized peptide.