

[Go to Product page](#)

Datasheet for ABIN7138680 anti-BIM antibody (pSer69)

2 Images

Overview

Quantity:	100 µL
Target:	BIM (BCL2L11)
Binding Specificity:	pSer69
Reactivity:	Human
Host:	Rabbit
Clonality:	Polyclonal
Conjugate:	This BIM antibody is un-conjugated
Application:	Immunohistochemistry (IHC), ELISA, Immunofluorescence (IF)

Product Details

Immunogen:	Peptide sequence around phosphorylation site of serine 69 (P-A-S(p)-P-G) derived from Human BIM.
Isotype:	IgG
Cross-Reactivity:	Human, Mouse, Rat
Purification:	Antibodies were produced by immunizing rabbits with synthetic phosphopeptide and KLH conjugates. Antibodies were purified by affinity-chromatography using epitope-specific phosphopeptide. Non-phospho specific antibodies were removed by chromatography using

Target Details

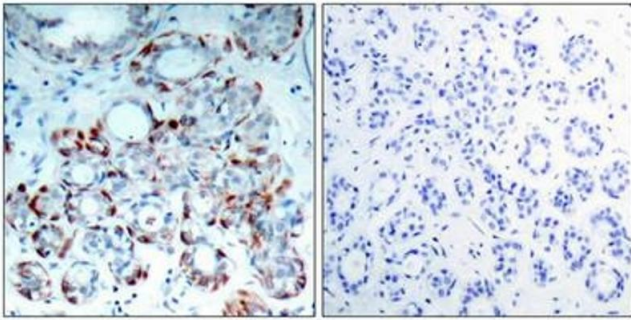
Target:	BIM (BCL2L11)
Alternative Name:	BCL2L11 (BCL2L11 Products)

Target Details

Background:	<p>Background: Induces apoptosis. Isoform BimL is more potent than isoform BimEL. Isoform Bim-a1, isoform Bim-a2 and isoform Bim-a3 induce apoptosis, although less potent than the isoforms BimEL, BimL and BimS. Isoform Bim-gamma induces apoptosis</p> <p>Fukazawa H, et al. (2004) Mol Cancer Ther , 3(10): 1281-1288</p> <p>Luciano F, et al. (2003) Oncogene , 22(43): 6785-6793</p> <p>Aliases: BCL2 like 11 antibody, B2L11_HUMAN antibody, BAM antibody, Bcl 2 interacting protein Bim antibody, Bcl 2 related ovarian death agonist antibody, Bcl-2-like protein 11 antibody, BCL2 interacting mediator of cell death antibody, BCL2 like 11 (apoptosis facilitator) antibody, BCL2 like protein 11 antibody, Bcl2-interacting mediator of cell death antibody, Bcl2-L-11 antibody, Bcl2l11 antibody, BIM alpha6 antibody, BIM antibody, BIM beta6 antibody, BIM beta7 antibody, BimEL antibody, BimL antibody, BOD antibody</p>
UniProt:	O43521
Pathways:	PI3K-Akt Signaling , Neurotrophin Signaling Pathway , Tube Formation , Positive Regulation of Endopeptidase Activity

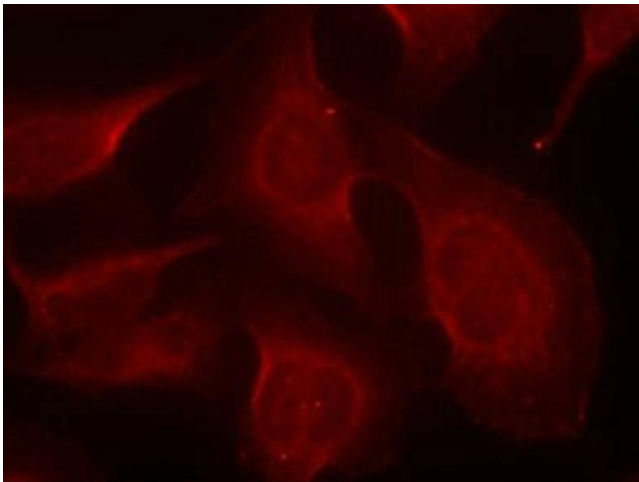
Application Details

Application Notes:	IHC:1:50-1:100, IF:1:100-1:200,
Restrictions:	For Research Use only
Handling	
Format:	Liquid
Buffer:	Supplied at 1.0 mg/mL in phosphate buffered saline (without Mg ²⁺ and Ca ²⁺), pH 7.4, 150 mM NaCl, 0.02 % sodium azide and 50 % glycerol.
Preservative:	Sodium azide
Precaution of Use:	This product contains Sodium azide: a POISONOUS AND HAZARDOUS SUBSTANCE which should be handled by trained staff only.
Storage:	-20 °C,-80 °C
Storage Comment:	Upon receipt, store at -20°C or -80°C. Avoid repeated freeze.



Immunohistochemistry

Image 1. Immunohistochemical analysis of paraffin-embedded human breast carcinoma tissue using BIM(Phospho-Ser69) Antibody(left) or the same antibody preincubated with blocking peptide(right).



Immunofluorescence

Image 2. Immunofluorescence staining of methanol-fixed HeLa cells using BIM(Phospho-Ser69) Antibody.