

Datasheet for ABIN7138685
anti-RAC1 antibody (pSer71)



[Go to Product page](#)

1 Image

Overview

Quantity:	100 µL
Target:	RAC1
Binding Specificity:	pSer71
Reactivity:	Human
Host:	Rabbit
Clonality:	Polyclonal
Conjugate:	This RAC1 antibody is un-conjugated
Application:	Western Blotting (WB), ELISA

Product Details

Immunogen:	Peptide sequence around phosphorylation site of serine 71 (P-L-S(p)-Y-P) derived from Human Rac1.
Isotype:	IgG
Cross-Reactivity:	Human, Mouse, Rat
Purification:	Antibodies were produced by immunizing rabbits with synthetic phosphopeptide and KLH conjugates. Antibodies were purified by affinity-chromatography using epitope-specific phosphopeptide. Non-phospho specific antibodies were removed by chromatography using

Target Details

Target:	RAC1
Abstract:	RAC1 Products

Target Details

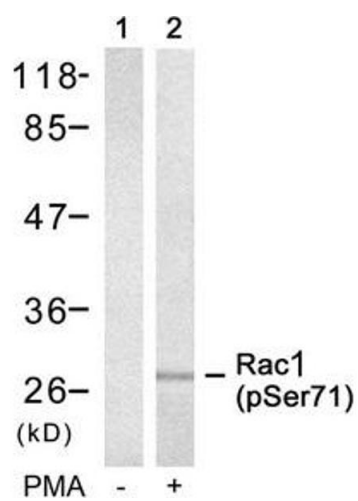
Background:	<p>Background: Rac1 encoded by this gene is a GTPase which belongs to the RAS superfamily of small GTP-binding proteins. Members of this superfamily appear to regulate a diverse array of cellular events, including the control of cell growth, cytoskeletal reorganization, and the activation of protein kinases. Two transcript variants encoding different isoforms have been found for this gene.</p> <p>Aoki K, et al. (2005) Mol Biol Cell, 16(5): 2207</p> <p>Aliases: Cell migration inducing gene 5 protein antibody, Cell migration-inducing gene 5 protein antibody, MGC111543 antibody, MIG5 antibody, Migration inducing gene 5 antibody, Migration inducing protein 5 antibody, p21 Rac1 antibody, p21-Rac1 antibody, Rac 1 antibody, RAC1 antibody, RAC1_HUMAN antibody, Ras like protein TC25 antibody, Ras related C3 botulinum toxin substrate 1 (rho family, small GTP binding protein Rac1) antibody, Ras-like protein TC25 antibody, Ras-related C3 botulinum toxin substrate 1 antibody, Rho family small GTP binding protein Rac1 antibody, TC 25 antibody, TC25 antibody</p>
UniProt:	P63000
Pathways:	WNT Signaling , Regulation of Actin Filament Polymerization , Cell-Cell Junction Organization , Thromboxane A2 Receptor Signaling , VEGF Signaling

Application Details

Application Notes:	WB:1:500-1:1000,
Restrictions:	For Research Use only

Handling

Format:	Liquid
Buffer:	Supplied at 1.0 mg/mL in phosphate buffered saline (without Mg2+ and Ca2+), pH 7.4, 150 mM NaCl, 0.02 % sodium azide and 50 % glycerol.
Preservative:	Sodium azide
Precaution of Use:	This product contains Sodium azide: a POISONOUS AND HAZARDOUS SUBSTANCE which should be handled by trained staff only.
Storage:	-20 °C,-80 °C
Storage Comment:	Upon receipt, store at -20°C or -80°C. Avoid repeated freeze.



Western Blotting

Image 1. Western blot analysis of extracts from 293 cells untreated(lane 1) or treated with PMA(lane 2) using Rac1(Phospho-Ser71) Antibody.