

Datasheet for ABIN7138686
anti-alpha Adducin antibody (pSer726)

3 Images

[Go to Product page](#)

Overview

Quantity:	100 µL
Target:	alpha Adducin (ADD1)
Binding Specificity:	pSer726
Reactivity:	Human
Host:	Rabbit
Clonality:	Polyclonal
Conjugate:	This alpha Adducin antibody is un-conjugated
Application:	Western Blotting (WB), Immunohistochemistry (IHC), ELISA, Immunofluorescence (IF)

Product Details

Immunogen:	Peptide sequence around phosphorylation site of serine 726 (T-P-S(p)-F-L) derived from Human ADD1.
Isotype:	IgG
Cross-Reactivity:	Human, Mouse, Rat
Purification:	Antibodies were produced by immunizing rabbits with synthetic phosphopeptide and KLH conjugates. Antibodies were purified by affinity-chromatography using epitope-specific phosphopeptide. Non-phospho specific antibodies were removed by chromatography using

Target Details

Target:	alpha Adducin (ADD1)
Alternative Name:	ADD1 (ADD1 Products)

Target Details

Background: Background: Adducins are a family of cytoskeleton proteins encoded by three genes (α, β, γ). Adducin is a heterodimeric protein that consists of related subunits, which are produced from distinct genes but share a similar structure. α- and β-adducin include a protease-resistant N-terminal region and a protease-sensitive, hydrophilic C-terminal region. α- and γ-adducins are ubiquitously expressed. In contrast, β-adducin is expressed at high levels in brain and hematopoietic tissues. Adducin binds with high affinity to Ca²⁺/calmodulin and is a substrate for protein kinases A and C. Alternative splicing results in multiple variants encoding distinct isoforms, however, not all variants have been fully described.

Pariser H, et al. Proc Natl Acad Sci USA 2005 Aug 30, 102(35): 12407-12

Tamaru S, et al. Biochem Biophys Res Commun 2005 Jul 01, 332(2): 347-51

Barkalow KL, et al. J Cell Biol 2003 May 12, 161(3): 557-70

Aliases: ADD A antibody, ADD1 antibody, ADDA antibody, ADDA_HUMAN antibody, Adducin 1 (α) antibody, Alpha adducin antibody, Alpha-adducin antibody, Erythrocyte adducin α subunit antibody, Erythrocyte adducin subunit α antibody, MGC3339 antibody, MGC44427 antibody, OTTHUMP00000151163 antibody, OTTHUMP00000151164 antibody, OTTHUMP00000151165 antibody, OTTHUMP00000218664 antibody, OTTHUMP00000218665 antibody

UniProt: [P35611](#)

Pathways: [Negative Regulation of Hormone Secretion](#), [Regulation of Actin Filament Polymerization](#), [Regulation of Lipid Metabolism by PPARα](#), [ER-Nucleus Signaling](#)

Application Details

Application Notes: WB:1:500-1:1000, IHC:1:50-1:100, IF:1:100-1:200,

Restrictions: For Research Use only

Handling

Format: Liquid

Buffer: Supplied at 1.0 mg/mL in phosphate buffered saline (without Mg²⁺ and Ca²⁺), pH 7.4, 150 mM NaCl, 0.02 % sodium azide and 50 % glycerol.

Preservative: Sodium azide

Precaution of Use: This product contains Sodium azide: a POISONOUS AND HAZARDOUS SUBSTANCE which

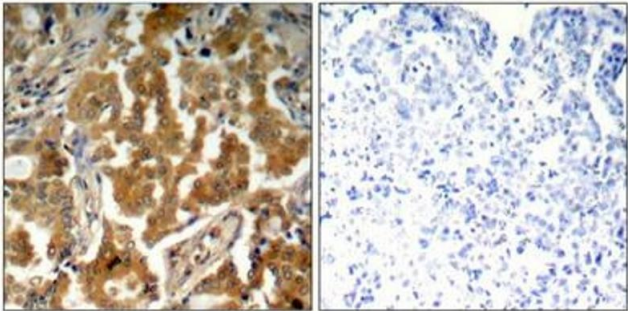
Handling

should be handled by trained staff only.

Storage: -20 °C,-80 °C

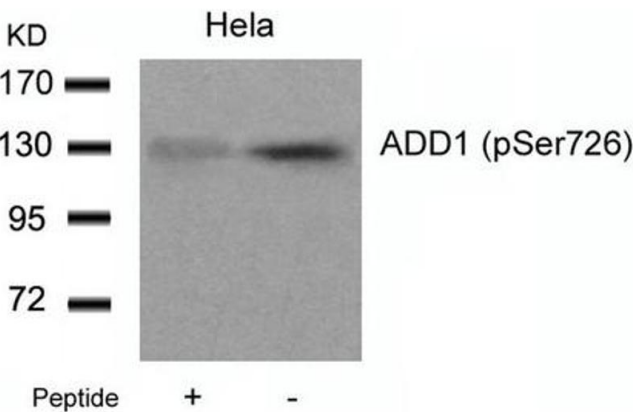
Storage Comment: Upon receipt, store at -20°C or -80°C. Avoid repeated freeze.

Images



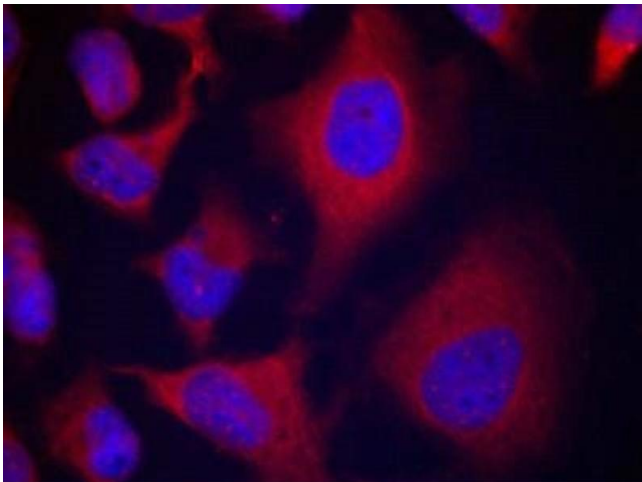
Immunohistochemistry

Image 1. Immunohistochemical analysis of paraffin-embedded human lung carcinoma tissue using ADD1(Phospho-Ser726) Antibody(left) or the same antibody preincubated with blocking peptide(right).



Western Blotting

Image 2. Western blot analysis of extracts from Hela cells using ADD1(Phospho-Ser726) Antibody and the same antibody preincubated with blocking peptide.



Immunofluorescence

Image 3. Immunofluorescence staining of methanol-fixed Hela cells using ADD1(Phospho-Ser726) Antibody.