

Datasheet for ABIN7138689
anti-C-JUN antibody (pSer73)

3 Images

[Go to Product page](#)

Overview

Quantity:	100 µL
Target:	C-JUN (JUN)
Binding Specificity:	pSer73
Reactivity:	Human
Host:	Rabbit
Clonality:	Polyclonal
Conjugate:	This C-JUN antibody is un-conjugated
Application:	Western Blotting (WB), Immunohistochemistry (IHC), ELISA

Product Details

Immunogen:	Peptide sequence around phosphorylation site of serine 73 (L-A-S(p)-P-E) derived from Human c-Jun.
Isotype:	IgG
Cross-Reactivity:	Human, Mouse, Rat
Purification:	Antibodies were produced by immunizing rabbits with synthetic phosphopeptide and KLH conjugates. Antibodies were purified by affinity-chromatography using epitope-specific phosphopeptide. Non-phospho specific antibodies were removed by chromatography using

Target Details

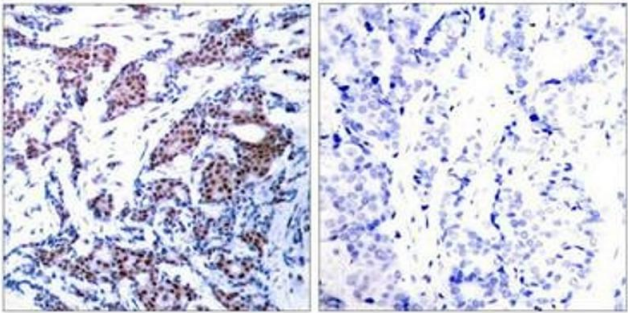
Target:	C-JUN (JUN)
Alternative Name:	JUN (JUN Products)

Target Details

Background:	<p>Background:</p> <p>Transcription factor that recognizes and binds to the enhancer heptamer motif 5'-TGA[CG]TCA-3'.</p> <p>Aliases: Activator protein 1 antibody, AP 1 antibody, AP-1 antibody, AP1 antibody, cJun antibody, Enhancer Binding Protein AP1 antibody, Jun Activation Domain Binding Protein antibody, JUN antibody, Jun oncogene antibody, JUN protein antibody, Jun proto oncogene antibody, JUN_HUMAN antibody, JUNC antibody, Oncogene JUN antibody, p39 antibody, Proto oncogene c jun antibody, Proto oncogene cJun antibody, Proto-oncogene c-jun antibody, Transcription Factor AP 1 antibody, Transcription factor AP-1 antibody, Transcription Factor AP1 antibody, V jun avian sarcoma virus 17 oncogene homolog antibody, V jun sarcoma virus 17 oncogene homolog (avian) antibody, V jun sarcoma virus 17 oncogene homolog antibody, V-jun avian sarcoma virus 17 oncogene homolog antibody, vJun Avian Sarcoma Virus 17 Oncogene Homolog antibody</p>
UniProt:	P05412
Pathways:	MAPK Signaling , RTK Signaling , WNT Signaling , Fc-epsilon Receptor Signaling Pathway , Activation of Innate immune Response , Myometrial Relaxation and Contraction , Skeletal Muscle Fiber Development , Protein targeting to Nucleus , Toll-Like Receptors Cascades , Autophagy , Signaling of Hepatocyte Growth Factor Receptor , BCR Signaling , S100 Proteins

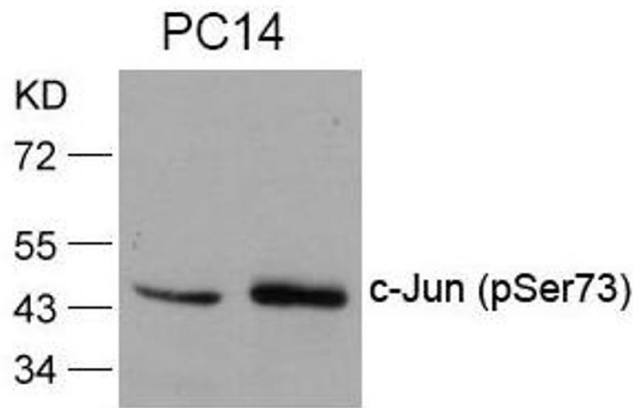
Application Details

Application Notes:	WB:1:500-1:1000, IHC:1:50-1:100,
Restrictions:	For Research Use only
Handling	
Format:	Liquid
Buffer:	Supplied at 1.0 mg/mL in phosphate buffered saline (without Mg ²⁺ and Ca ²⁺), pH 7.4, 150 mM NaCl, 0.02 % sodium azide and 50 % glycerol.
Preservative:	Sodium azide
Precaution of Use:	This product contains Sodium azide: a POISONOUS AND HAZARDOUS SUBSTANCE which should be handled by trained staff only.
Storage:	-20 °C,-80 °C
Storage Comment:	Upon receipt, store at -20°C or -80°C. Avoid repeated freeze.



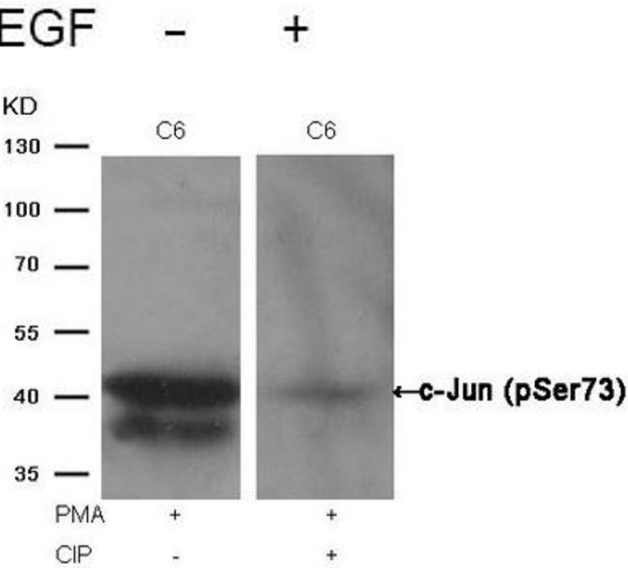
Immunohistochemistry

Image 1. Immunohistochemical analysis of paraffin-embedded human breast carcinoma tissue using c-Jun(Phospho-Ser73) Antibody(left) or the same antibody preincubated with blocking peptide(right).



Western Blotting

Image 2. Western blot analysis of extracts from PC14 cells untreated or treated with EGF using c-Jun(Phospho-Ser73) Antibody.



Western Blotting

Image 3. Western blot analysis of extracts from C6 cells, treated with PMA or calf intestinal phosphatase (CIP), using c-Jun (Phospho-Ser73) Antibody.