

Datasheet for ABIN7138690
anti-STAT5B antibody (pSer731)[Go to Product page](#)

2 Images

Overview

Quantity:	100 µL
Target:	STAT5B
Binding Specificity:	pSer731
Reactivity:	Human
Host:	Rabbit
Clonality:	Polyclonal
Conjugate:	This STAT5B antibody is un-conjugated
Application:	Western Blotting (WB), Immunohistochemistry (IHC), ELISA

Product Details

Immunogen:	Peptide sequence around phosphorylation site of serine 731 (A-P-S(p)-P-A) derived from Human STAT5B.
Isotype:	IgG
Cross-Reactivity:	Human, Mouse, Rat
Purification:	Antibodies were produced by immunizing rabbits with synthetic phosphopeptide and KLH conjugates. Antibodies were purified by affinity-chromatography using epitope-specific phosphopeptide. Non-phospho specific antibodies were removed by chromatography using

Target Details

Target:	STAT5B
Alternative Name:	STAT5B (STAT5B Products)

Target Details

Background: Background: Carries out a dual function: signal transduction and activation of transcription. Mediates cellular responses to the cytokine KITLG/SCF and other growth factors. Binds to the GAS element and activates PRL-induced transcription.

Aliases: Signal transducer and activator of transcription 5B antibody, STA5B_HUMAN antibody, STAT5 antibody, Stat5b antibody, Transcription factor STAT5B antibody

UniProt: [P51692](#)

Pathways: [JAK-STAT Signaling](#), [RTK Signaling](#), [Response to Growth Hormone Stimulus](#), [C21-Steroid Hormone Metabolic Process](#), [Regulation of Leukocyte Mediated Immunity](#), [Positive Regulation of Immune Effector Process](#), [CXCR4-mediated Signaling Events](#), [Activated T Cell Proliferation](#)

Application Details

Application Notes: WB:1:500-1:3000, IHC:1:50-1:100,

Restrictions: For Research Use only

Handling

Format: Liquid

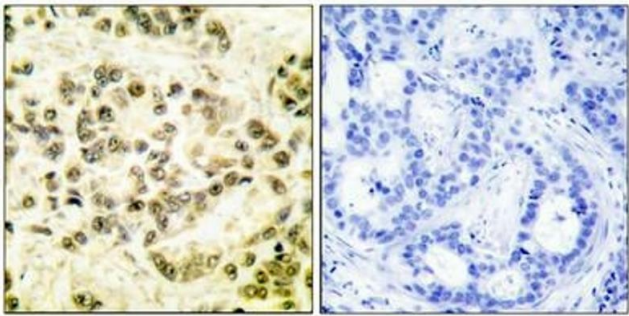
Buffer: Rabbit IgG in phosphate buffered saline (without Mg²⁺ and Ca²⁺), pH 7.4, 150 mM NaCl, 0.02 % sodium azide and 50 % glycerol.

Preservative: Sodium azide

Precaution of Use: This product contains Sodium azide: a POISONOUS AND HAZARDOUS SUBSTANCE which should be handled by trained staff only.

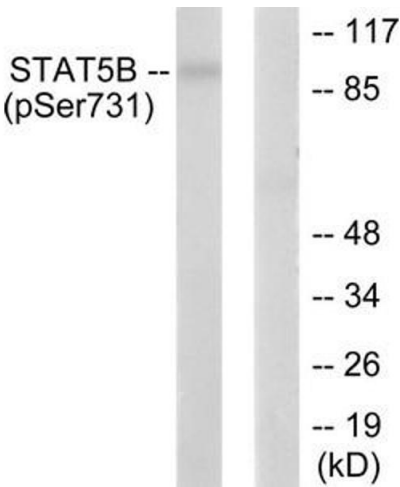
Storage: -20 °C, -80 °C

Storage Comment: Upon receipt, store at -20°C or -80°C. Avoid repeated freeze.



Immunohistochemistry

Image 1. Immunohistochemical analysis of paraffin-embedded human breast carcinoma tissue using STAT5B (phospho-Ser731) antibody. The picture on the right is treated with the synthesized peptide.



Western Blotting

Image 2. Western blot analysis of extracts from RAW264.7 cells, treated with EGF (200 ng/mL, 30 mins), using STAT5B (phospho-Ser731) antibody. The lane on the right is treated with the synthesized peptide.