

Datasheet for ABIN7138695
anti-CDC25A antibody (pSer76)



[Go to Product page](#)

2 Images

Overview

Quantity:	100 µL
Target:	CDC25A
Binding Specificity:	pSer76
Reactivity:	Human
Host:	Rabbit
Clonality:	Polyclonal
Conjugate:	This CDC25A antibody is un-conjugated
Application:	Western Blotting (WB), ELISA, Immunohistochemistry (IHC)

Product Details

Immunogen:	Peptide sequence around phosphorylation site of serine 76 (M-G-S(p)-S-E) derived from Human cdc25A.
Isotype:	IgG
Cross-Reactivity:	Human, Mouse, Rat
Purification:	Antibodies were produced by immunizing rabbits with synthetic phosphopeptide and KLH conjugates. Antibodies were purified by affinity-chromatography using epitope-specific phosphopeptide. Non-phospho specific antibodies were removed by chromatography using

Target Details

Target:	CDC25A
Alternative Name:	CDC25A (CDC25A Products)

Target Details

Background: Background: Tyrosine protein phosphatase which functions as a dosage-dependent inducer of mitotic progression. Directly dephosphorylates CDC2 and stimulates its kinase activity. Also dephosphorylates CDK2 in complex with cyclin E, in vitro.

Jin J, et al. (2003) Genes 17(24): 3062-74.

Shimuta K, et al. (2002) EMBO J 21(14): 3694-703.

Aliases: Cdc 25a antibody, CDC25A antibody, CDC25A2 antibody, CDC25A2 CAG isoform antibody, Cell division cycle 25 homolog A (S. pombe) antibody, Cell division cycle 25A antibody, Cell division cycle 25A isoform a antibody, Cell division cycle 25A isoform b antibody, D9ErtD393e antibody, Dual specificity phosphatase Cdc25A antibody, M phase inducer phosphatase 1 antibody, M-phase inducer phosphatase 1 antibody, MGC115549 antibody, MPIP1_HUMAN antibody

UniProt: [P30304](#)

Pathways: [Cell Division Cycle](#), [Mitotic G1-G1/S Phases](#), [M Phase](#)

Application Details

Application Notes: WB:1:500-1:1000, IHC:1:50-1:100,

Restrictions: For Research Use only

Handling

Format: Liquid

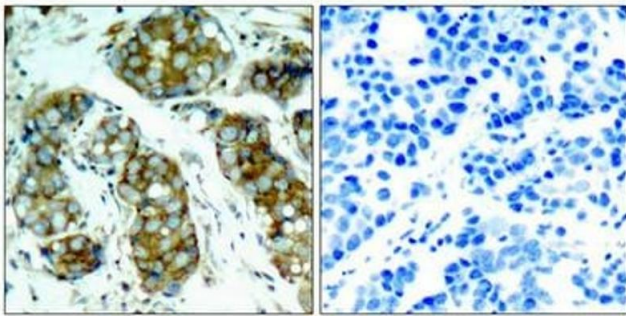
Buffer: Supplied at 1.0 mg/mL in phosphate buffered saline (without Mg²⁺ and Ca²⁺), pH 7.4, 150 mM NaCl, 0.02 % sodium azide and 50 % glycerol.

Preservative: Sodium azide

Precaution of Use: This product contains Sodium azide: a POISONOUS AND HAZARDOUS SUBSTANCE which should be handled by trained staff only.

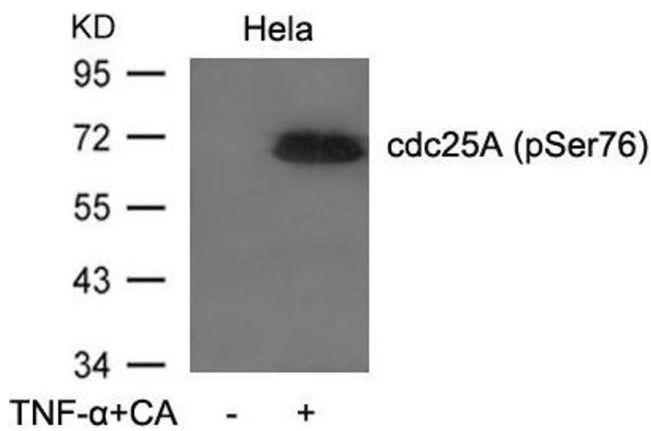
Storage: -20 °C,-80 °C

Storage Comment: Upon receipt, store at -20°C or -80°C. Avoid repeated freeze.



Immunohistochemistry

Image 1. Immunohistochemical analysis of paraffin-embedded human breast carcinoma tissue using cdc25A(Phospho-Ser76) Antibody(left) or the same antibody preincubated with blocking peptide(right).



Western Blotting

Image 2. Western blot analysis of extracts from HeLa cells untreated or treated with TNF- α and CA using cdc25A(Phospho-Ser76) Antibody.