

Datasheet for ABIN7138696  
**anti-SRF antibody (pSer77)**[Go to Product page](#)

## 2 Images

## Overview

Quantity:	100 µL
Target:	SRF
Binding Specificity:	pSer77
Reactivity:	Human
Host:	Rabbit
Clonality:	Polyclonal
Conjugate:	This SRF antibody is un-conjugated
Application:	Western Blotting (WB), ELISA, Immunohistochemistry (IHC)

## Product Details

Immunogen:	Peptide sequence around phosphorylation site of serine 77 (L-Y-S(p)-G-S) derived from Human SRF.
Isotype:	IgG
Cross-Reactivity:	Human, Mouse
Purification:	Antibodies were produced by immunizing rabbits with synthetic phosphopeptide and KLH conjugates. Antibodies were purified by affinity-chromatography using epitope-specific phosphopeptide. Non-phospho specific antibodies were removed by chromatography using

## Target Details

Target:	SRF
Alternative Name:	SRF ( <a href="#">SRF Products</a> )

## Target Details

Background:	<p>Background: SRF is a transcription factor that binds to the serum response element (SRE), a short sequence of dyad symmetry located 300 bp to the 5' of the site of transcription initiation of some genes (such as FOS). Required for cardiac differentiation and maturation.</p> <p>Aliases: c fos serum response element binding factor antibody, c fos serum response element binding transcription factor antibody, ELK3 antibody, ERP antibody, MCM 1 antibody, MCM1 antibody, OTTHUMP00000039820 antibody, SAP2 antibody, Serum response factor antibody, SRF antibody, SRF serum response factor c fos serum response element binding transcription factor antibody, SRF_HUMAN antibody</p>
-------------	--

UniProt:	<a href="#">P11831</a>
----------	------------------------

## Application Details

Application Notes:	WB:1:500-1:3000, IHC:1:50-1:100,
--------------------	----------------------------------

Restrictions:	For Research Use only
---------------	-----------------------

## Handling

Format:	Liquid
---------	--------

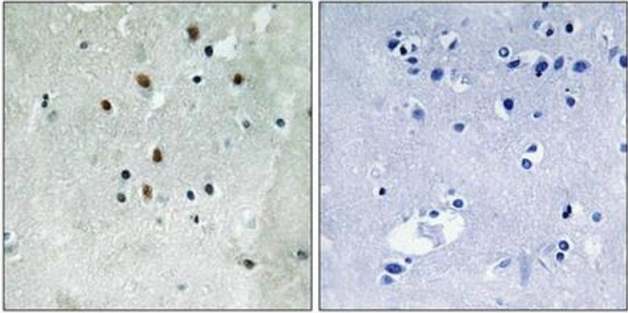
Buffer:	Rabbit IgG in phosphate buffered saline (without Mg <sup>2+</sup> and Ca <sup>2+</sup> ), pH 7.4, 150 mM NaCl, 0.02 % sodium azide and 50 % glycerol.
---------	---

Preservative:	Sodium azide
---------------	--------------

Precaution of Use:	This product contains Sodium azide: a POISONOUS AND HAZARDOUS SUBSTANCE which should be handled by trained staff only.
--------------------	--

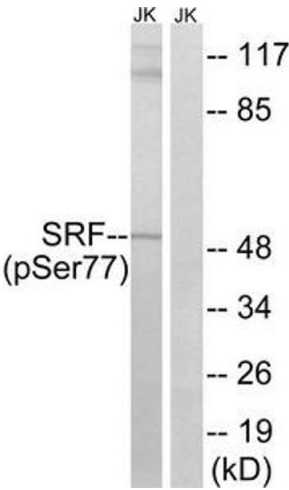
Storage:	-20 °C,-80 °C
----------	---------------

Storage Comment:	Upon receipt, store at -20°C or -80°C. Avoid repeated freeze.
------------------	---



### Immunohistochemistry

**Image 1.** Immunohistochemistry analysis of paraffin-embedded human brain tissue using SRF (Phospho-Ser77) antibody. The picture on the right is treated with the synthesized peptide.



### Western Blotting

**Image 2.** Western blot analysis of extracts from Jurkat cells, treated with PMA (125 ng/mL, 30 mins), using SRF (Phospho-Ser77) antibody. The lane on the right is treated with the synthesized peptide.