

Datasheet for ABIN7138700
anti-Dynamin 1 antibody (pSer778)

2 Images

[Go to Product page](#)

Overview

Quantity:	100 µL
Target:	Dynamin 1 (DNM1)
Binding Specificity:	pSer778
Reactivity:	Human
Host:	Rabbit
Clonality:	Polyclonal
Conjugate:	This Dynamin 1 antibody is un-conjugated
Application:	Western Blotting (WB), ELISA

Product Details

Immunogen:	Peptide sequence around phosphorylation site of serine 778 (T-S-S(p)-P-T) derived from Human DYN1.
Isotype:	IgG
Cross-Reactivity:	Human, Mouse, Rat
Purification:	Antibodies were produced by immunizing rabbits with synthetic phosphopeptide and KLH conjugates. Antibodies were purified by affinity-chromatography using epitope-specific phosphopeptide. Non-phospho specific antibodies were removed by chromatography using

Target Details

Target:	Dynamin 1 (DNM1)
Alternative Name:	DNM1 (DNM1 Products)

Target Details

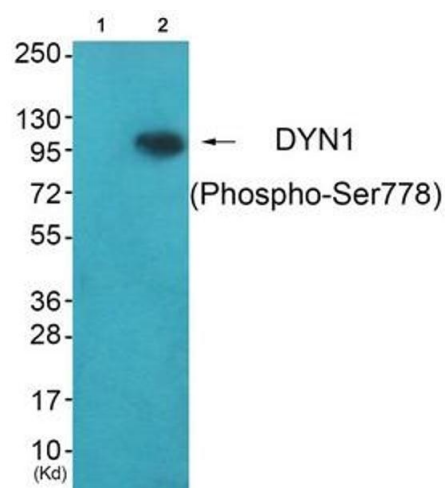
Background:	Background: Microtubule-associated force-producing protein involved in producing microtubule bundles and able to bind and hydrolyze GTP. Most probably involved in vesicular trafficking processes. Involved in receptor-mediated endocytosis. Aliases: B dynamin antibody, D100 antibody, DNM 1 antibody, DNM antibody, DNM1 antibody, DYN1_HUMAN antibody, Dynamin antibody, Dynamin-1 antibody, Dynamin1 antibody
UniProt:	Q05193
Pathways:	Toll-Like Receptors Cascades , CXCR4-mediated Signaling Events , Thromboxane A2 Receptor Signaling

Application Details

Application Notes:	WB:1:500-1:3000,
Restrictions:	For Research Use only

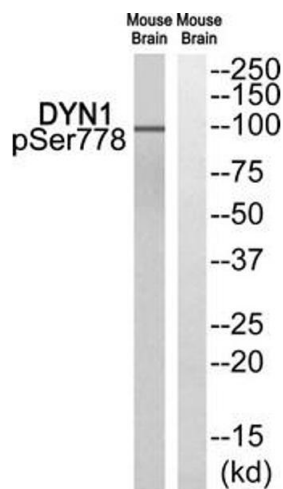
Handling

Format:	Liquid
Buffer:	Rabbit IgG in phosphate buffered saline (without Mg ²⁺ and Ca ²⁺), pH 7.4, 150 mM NaCl, 0.02 % sodium azide and 50 % glycerol.
Preservative:	Sodium azide
Precaution of Use:	This product contains Sodium azide: a POISONOUS AND HAZARDOUS SUBSTANCE which should be handled by trained staff only.
Storage:	-20 °C,-80 °C
Storage Comment:	Upon receipt, store at -20°C or -80°C. Avoid repeated freeze.



Western Blotting

Image 1. Western blot analysis of extracts from HepG2 cells (Lane 2), using DYN1 (Phospho-Ser778) Antibody. The lane on the left is treated with synthesized peptide.



Western Blotting

Image 2. Western blot analysis of extracts from Mouse brain cells, using DYN1 (Phospho-Ser778) antibody. The lane on the right is treated with the synthesized peptide.