

Datasheet for ABIN7138709

anti-Splicing Factor 1 antibody (pSer82)**2** Images[Go to Product page](#)

Overview

Quantity:	100 µL
Target:	Splicing Factor 1 (SF1)
Binding Specificity:	pSer82
Reactivity:	Human
Host:	Rabbit
Clonality:	Polyclonal
Conjugate:	This Splicing Factor 1 antibody is un-conjugated
Application:	Western Blotting (WB), ELISA, Immunohistochemistry (IHC)

Product Details

Immunogen:	Peptide sequence around phosphorylation site of Serine 82(S-P-S(p)-P-E) derived from Human SF1.
Isotype:	IgG
Cross-Reactivity:	Human, Mouse
Purification:	Antibodies were produced by immunizing rabbits with synthetic phosphopeptide and KLH conjugates. Antibodies were purified by affinity-chromatography using epitope-specific phosphopeptide. Non-phospho specific antibodies were removed by chromatography using

Target Details

Target:	Splicing Factor 1 (SF1)
Alternative Name:	SF1 (SF1 Products)

Target Details

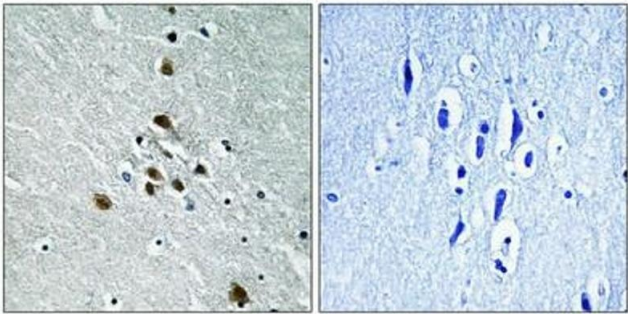
Background:	<p>Background:</p> <p>Necessary for the ATP-dependent first step of spliceosome assembly. Binds to the intron branch point sequence (BPS) 5'-UACUAAAC-3' of the pre-mRNA. May act as transcription repressor.</p> <p>Susan Y. Park, Development, May 2005, 132: 2415 - 2423.</p> <p>Dujin Zhou, Mol. Endocrinol., Jul 2000, 14: 986.</p> <p>Dagmar Wilhelm, Genes & Dev., Jul 2002, 16: 1839.</p> <p>Philipp Gut, Development, Oct 2005, 132: 4611 - 4619.</p> <p>Aliases: SF1 antibody, ZFM1 antibody, ZNF162 antibody, Splicing factor 1 antibody, Mammalian branch point-binding protein antibody, BBP antibody, mBBP antibody, Transcription factor ZFM1 antibody, Zinc finger gene in MEN1 locus antibody, Zinc finger protein 162 antibody</p>
UniProt:	Q15637
Pathways:	Nuclear Receptor Transcription Pathway , Steroid Hormone Mediated Signaling Pathway , Ribonucleoprotein Complex Subunit Organization , Maintenance of Protein Location

Application Details

Application Notes:	WB:1:500-1:1000, IHC:1:50-1:100,
Restrictions:	For Research Use only

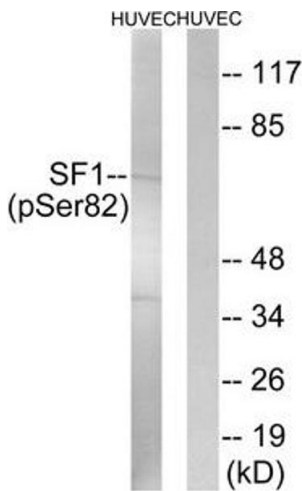
Handling

Format:	Liquid
Buffer:	Rabbit IgG in phosphate buffered saline (without Mg ²⁺ and Ca ²⁺), pH 7.4, 150 mM NaCl, 0.02 % sodium azide and 50 % glycerol.
Preservative:	Sodium azide
Precaution of Use:	This product contains Sodium azide: a POISONOUS AND HAZARDOUS SUBSTANCE which should be handled by trained staff only.
Storage:	-20 °C, -80 °C
Storage Comment:	Upon receipt, store at -20°C or -80°C. Avoid repeated freeze.



Immunohistochemistry

Image 1. Immunohistochemical analysis of paraffin-embedded human brain tissue using SF1 (Phospho-Ser82) antibody (left) or the same antibody preincubated with blocking peptide (right).



Western Blotting

Image 2. Western blot analysis of extracts from HUVEC cells treated with anisomycin using SF1 (Phospho-Ser82) Antibody. The lane on the right is treated with the antigen-specific peptide.