

Datasheet for ABIN7138712  
**anti-PKMYT1 antibody (pSer83)**[Go to Product page](#)

## 1 Image

## Overview

Quantity:	100 µL
Target:	PKMYT1
Binding Specificity:	pSer83
Reactivity:	Human
Host:	Rabbit
Clonality:	Polyclonal
Conjugate:	This PKMYT1 antibody is un-conjugated
Application:	ELISA, Immunohistochemistry (IHC)

## Product Details

Immunogen:	Peptide sequence around phosphorylation site of Serine 83(R-V-S(p)-F-R) derived from Human MYT1.
Isotype:	IgG
Cross-Reactivity:	Human
Purification:	Antibodies were produced by immunizing rabbits with synthetic phosphopeptide and KLH conjugates. Antibodies were purified by affinity-chromatography using epitope-specific phosphopeptide. Non-phospho specific antibodies were removed by chromatography using

## Target Details

Target:	PKMYT1
Alternative Name:	PKMYT1 ( <a href="#">PKMYT1 Products</a> )

## Target Details

Background:	<p>Background:</p> <p>The protein encoded by this gene is a member of the serine/threonine protein kinase family. This kinase preferentially phosphorylates and inactivates cell division cycle 2 protein (CDC2), and thus negatively regulates cell cycle G2/M transition. This kinase is associated with the membrane throughout the cell cycle. Its activity is highly regulated during the cell cycle. Protein kinases AKT1/PKB and PLK (Polo-like kinase) have been shown to phosphorylate and regulate the activity of this kinase. Alternatively spliced transcript variants encoding distinct isoforms have been reported.</p> <p>Booher R.N., J. Biol. Chem. 272:22300-22306(1997).</p> <p>Liu F., Mol. Cell. Biol. 17:571-583(1997).</p> <p>Nousiainen M., Proc. Natl. Acad. Sci. U.S.A. 103:5391-5396(2006).</p> <p>Aliases: cdc2 inhibitory kinase antibody, DKFZp547K1610 antibody, FLJ20093 antibody, Membrane associated tyrosine and threonine specific cdc2 inhibitory kinase antibody, Membrane-associated tyrosine- and threonine-specific cdc2-inhibitory kinase antibody, MYT1 antibody, Myt1 kinase antibody, PKMYT 1 antibody, Pkmyt1 antibody, PMYT1_HUMAN antibody, PPP1R126 antibody, Protein kinase membrane associated tyrosine/threonine 1 antibody, Protein kinase Myt1 antibody, Protein phosphatase 1 regulatory subunit 126 antibody</p>
UniProt:	<a href="#">Q99640</a>
Pathways:	<a href="#">Mitotic G1-G1/S Phases</a> , <a href="#">M Phase</a>

## Application Details

Application Notes:	IHC:1:50-1:100,
Restrictions:	For Research Use only

## Handling

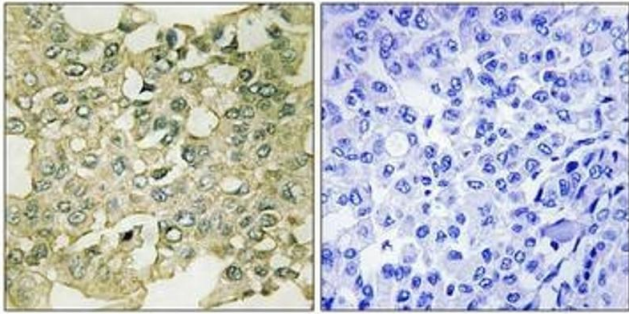
Format:	Liquid
Buffer:	Rabbit IgG in phosphate buffered saline (without Mg <sup>2+</sup> and Ca <sup>2+</sup> ), pH 7.4, 150 mM NaCl, 0.02 % sodium azide and 50 % glycerol.
Preservative:	Sodium azide
Precaution of Use:	This product contains Sodium azide: a POISONOUS AND HAZARDOUS SUBSTANCE which should be handled by trained staff only.

## Handling

Storage: -20 °C, -80 °C

Storage Comment: Upon receipt, store at -20°C or -80°C. Avoid repeated freeze.

## Images



### Immunohistochemistry

**Image 1.** Immunohistochemical analysis of paraffin-embedded human breast carcinoma tissue using MYT1 (Phospho-Ser83) antibody (left) or the same antibody preincubated with blocking peptide (right).