

Datasheet for ABIN7138719
anti-NFKB2 antibody (pSer870)



[Go to Product page](#)

3 Images

Overview

Quantity:	100 µL
Target:	NFKB2
Binding Specificity:	pSer870
Reactivity:	Human
Host:	Rabbit
Clonality:	Polyclonal
Conjugate:	This NFKB2 antibody is un-conjugated
Application:	Western Blotting (WB), Immunohistochemistry (IHC), ELISA, Immunofluorescence (IF)

Product Details

Immunogen:	Peptide sequence around phosphorylation site of serine 870(Y-G-S(p)-Q-S) derived from Human NFkappaB-p100.
Isotype:	IgG
Cross-Reactivity:	Human, Mouse, Rat
Purification:	Antibodies were produced by immunizing rabbits with synthetic phosphopeptide and KLH conjugates. Antibodies were purified by affinity-chromatography using epitope-specific phosphopeptide. Non-phospho specific antibodies were removed by chromatography using

Target Details

Target:	NFKB2
Alternative Name:	NFKB2 (NFKB2 Products)

Background:

Background: NF-kappa-B is a pleiotropic transcription factor present in almost all cell types and is the endpoint of a series of signal transduction events that are initiated by a vast array of stimuli related to many biological processes such as inflammation, immunity, differentiation, cell growth, tumorigenesis and apoptosis. NF-kappa-B is a homo- or heterodimeric complex formed by the Rel-like domain-containing proteins RELA/p65, RELB, NFKB1/p105, NFKB1/p50, REL and NFKB2/p52. The dimers bind at kappa-B sites in the DNA of their target genes and the individual dimers have distinct preferences for different kappa-B sites that they can bind with distinguishable affinity and specificity. Different dimer combinations act as transcriptional activators or repressors, respectively. NF-kappa-B is controlled by various mechanisms of post-translational modification and subcellular compartmentalization as well as by interactions with other cofactors or corepressors. NF-kappa-B complexes are held in the cytoplasm in an inactive state complexed with members of the NF-kappa-B inhibitor (I-kappa-B) family. In a conventional activation pathway, I-kappa-B is phosphorylated by I-kappa-B kinases (IKKs) in response to different activators, subsequently degraded thus liberating the active NF-kappa-B complex which translocates to the nucleus. In a non-canonical activation pathway, the MAP3K14-activated CHUK/IKKA homodimer phosphorylates NFKB2/p100 associated with RelB, inducing its proteolytic processing to NFKB2/p52 and the formation of NF-kappa-B RelB-p52 complexes. The NF-kappa-B heterodimeric RelB-p52 complex is a transcriptional activator. The NF-kappa-B p52-p52 homodimer is a transcriptional repressor. NFKB2 appears to have dual functions such as cytoplasmic retention of attached NF-kappa-B proteins by p100 and generation of p52 by a cotranslational processing. The proteasome-mediated process ensures the production of both p52 and p100 and preserves their independent function. p52 binds to the kappa-B consensus sequence 5'-GGRNNYYCC-3', located in the enhancer region of genes involved in immune response and acute phase reactions. p52 and p100 are respectively the minor and major form; the processing of p100 being relatively poor. Isoform p49 is a subunit of the NF-kappa-B protein complex, which stimulates the HIV enhancer in synergy with p65. Dobrzanski P., Ryseck R.P., Bravo R. EMBO J. 13:4608-4616(1994) Betts J.C., Nabel G.J. Mol. Cell. Biol. 16:6363-6371(1996)

Aliases: CVID10 antibody; DNA binding factor KBF2 antibody; DNA-binding factor KBF2 antibody; H2TF1 antibody; Lymphocyte translocation chromosome 10 antibody; Lymphocyte translocation chromosome 10 protein antibody; Lyt 10 antibody; Lyt10 antibody; NF kappa B antibody; NFKB2 antibody; NFKB2_HUMAN antibody; Nuclear factor NF kappa B p100 subunit antibody; Nuclear factor NF kappa B p52 subunit antibody; Nuclear factor NF-kappa-B p52 subunit antibody; Nuclear factor of kappa light chain gene enhancer in B cells 2 antibody; Nuclear factor of kappa light polypeptide gene enhancer in B cells 2 antibody; Nuclear factor of kappa light polypeptide gene enhancer in B-cells 2 antibody; Oncogene Lyt 10 antibody; Oncogene Lyt-10 antibody; p105 antibody; p49/p100 antibody

Target Details

UniProt:	Q00653
Pathways:	Toll-Like Receptors Cascades

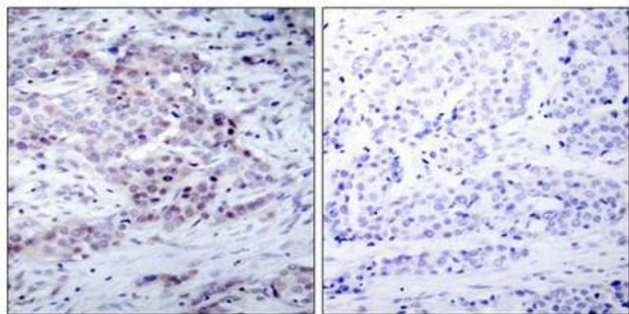
Application Details

Application Notes:	WB:1:500-1:1000, IHC:1:50-1:100, IF:1:100-1:200,
Restrictions:	For Research Use only

Handling

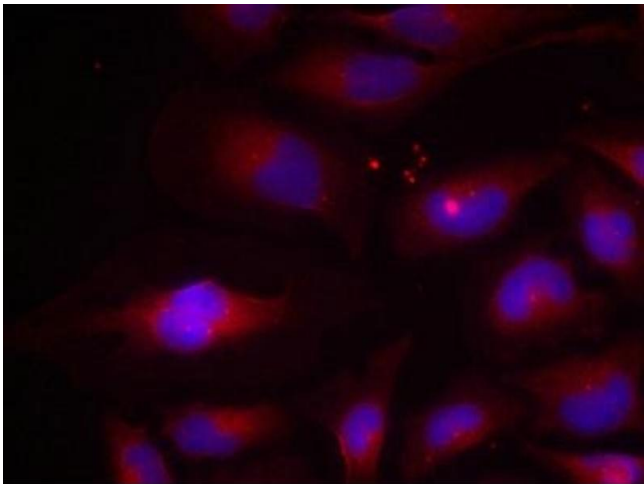
Format:	Liquid
Buffer:	Supplied at 1.0 mg/mL in phosphate buffered saline (without Mg ²⁺ and Ca ²⁺), pH 7.4, 150 mM NaCl, 0.02 % sodium azide and 50 % glycerol.
Preservative:	Sodium azide
Precaution of Use:	This product contains Sodium azide: a POISONOUS AND HAZARDOUS SUBSTANCE which should be handled by trained staff only.
Storage:	-20 °C,-80 °C
Storage Comment:	Upon receipt, store at -20°C or -80°C. Avoid repeated freeze.

Images



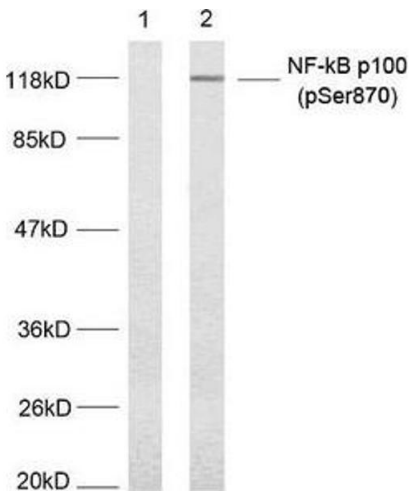
Immunohistochemistry

Image 1. Immunohistochemical analysis of paraffin-embedded human breast carcinoma tissue using NF-κB p100(phospho- Ser870) antibody.



Immunofluorescence

Image 2. Immunofluorescence staining of methanol-fixed HeLa cells using NF-kappa,B p100(phospho-Ser870) antibody.



Western Blotting

Image 3. Western blot analysis of extract from MDA-MB-435 cells untreated or treated with TNF-alpha, (20 ng/mL, 5 min) using NF-kappa,B p100(phospho-Ser870) antibody.